

German enterprises' assessments of their liquidity reserves

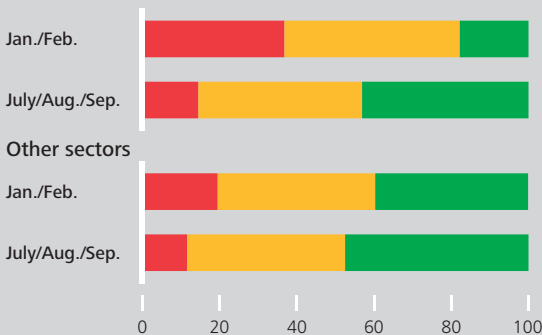
Chart 2.1.13

Percentage share of responses for each survey period in 2021, weighted results

Liquidity reserves ...



Sectors hit particularly hard by the coronavirus pandemic¹



Source: Bundesbank Online Panel Firms (BOP-F). Question: "Based on the situation today and the most plausible scenario, for how long a period will your enterprise continue to have sufficient liquidity before having to discontinue or abandon its business activities?" ¹ Accommodation and food service activities, retail trade, transportation and storage.

Deutsche Bundesbank