

II. Current account

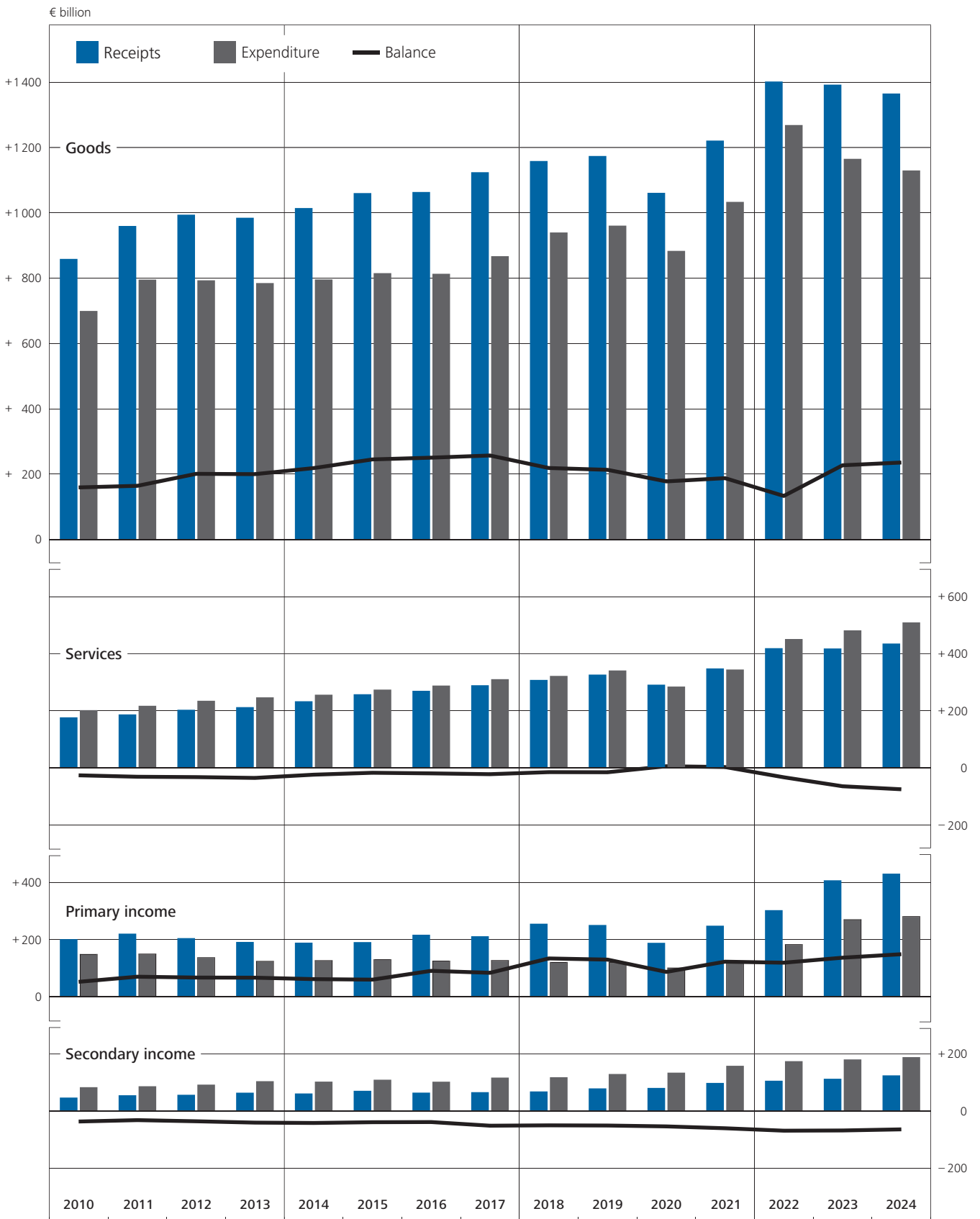
1. Overview

€ million

Period	Goods			Services			Primary income			Secondary income			Balance of current account
	Receipts	Expenditure	Balance	Receipts	Expenditure	Balance	Receipts	Expenditure	Balance	Receipts	Expenditure	Balance	
	1	2	3	4	5	6	7	8	9	10	11	12	
1971	66,648	54,539	+ 12,110	11,843	16,897	- 5,054	6,709	6,041	+ 669	1,451	6,891	- 5,441	+ 2,284
1972	72,984	59,388	+ 13,596	12,540	18,300	- 5,760	7,112	6,914	+ 198	1,561	7,530	- 5,969	+ 2,065
1973	87,676	66,883	+ 20,793	13,179	20,521	- 7,342	9,160	8,503	+ 657	1,568	8,777	- 7,209	+ 6,899
1974	115,657	86,176	+ 29,481	14,601	22,802	- 8,201	10,204	9,933	+ 271	2,010	9,535	- 7,524	+ 14,026
1975	111,206	89,237	+ 21,969	16,414	25,432	- 9,018	10,581	8,603	+ 1,978	1,750	10,147	- 8,397	+ 6,532
1976	127,636	106,568	+ 21,068	18,035	27,493	- 9,458	12,546	9,713	+ 2,833	1,909	11,015	- 9,105	+ 5,337
1977	135,422	112,248	+ 23,174	19,019	29,241	- 10,222	13,760	11,676	+ 2,083	2,521	12,115	- 9,594	+ 5,441
1978	141,574	115,728	+ 25,846	20,441	31,574	- 11,133	16,762	11,194	+ 5,568	2,541	13,094	- 10,553	+ 9,728
1979	155,056	139,299	+ 15,757	22,055	35,667	- 13,612	18,697	14,790	+ 3,908	2,471	13,926	- 11,455	- 5,402
1980	174,204	164,328	+ 9,876	24,601	40,470	- 15,869	21,216	17,389	+ 3,828	2,650	14,604	- 11,954	- 14,119
1981	198,529	177,691	+ 20,838	27,982	45,218	- 17,236	24,540	20,888	+ 3,652	2,298	15,205	- 12,907	- 5,654
1982	214,321	180,383	+ 33,938	30,373	46,499	- 16,126	24,248	21,336	+ 2,912	2,578	15,857	- 13,279	+ 7,444
1983	214,157	185,446	+ 28,711	31,743	46,878	- 15,134	26,344	20,104	+ 6,240	2,882	16,693	- 13,811	+ 6,006
1984	241,362	206,669	+ 34,693	34,526	49,141	- 14,615	31,127	21,826	+ 9,301	2,690	18,610	- 15,920	+ 13,459
1985	266,390	220,771	+ 45,619	37,987	51,896	- 13,909	33,213	23,475	+ 9,738	2,815	17,988	- 15,173	+ 26,275
1986	259,345	195,386	+ 63,958	36,503	51,810	- 15,307	34,986	25,879	+ 9,106	3,086	18,840	- 15,754	+ 42,004
1987	257,876	192,218	+ 65,658	36,845	53,921	- 17,076	36,138	28,685	+ 7,453	2,822	18,871	- 16,050	+ 39,986
1988	278,848	207,035	+ 71,813	39,156	57,488	- 18,332	45,378	31,383	+ 13,995	3,498	21,972	- 18,474	+ 49,002
1989	314,878	239,126	+ 75,751	44,905	62,671	- 17,765	54,096	36,884	+ 17,212	3,659	22,247	- 18,588	+ 56,610
1990	326,121	263,956	+ 62,165	47,862	69,991	- 22,129	65,028	45,058	+ 19,970	4,465	23,220	- 18,755	+ 41,250
1991	324,351	306,304	+ 18,047	51,059	76,790	- 25,731	69,236	55,060	+ 14,176	19,198	44,687	- 25,489	- 18,997
1992	326,073	301,840	+ 24,233	51,977	84,503	- 32,526	70,259	56,600	+ 13,659	20,729	42,902	- 22,173	- 16,808
1993	298,758	263,220	+ 35,538	51,617	86,662	- 35,045	71,479	61,305	+ 10,174	22,740	47,125	- 24,385	- 13,717
1994	328,308	285,072	+ 43,236	51,526	92,300	- 40,773	65,856	65,712	+ 144	23,321	50,010	- 26,689	- 24,082
1995	354,511	304,582	+ 49,929	54,786	97,580	- 42,794	67,609	70,805	- 3,196	24,403	48,653	- 24,250	- 20,311
1996	372,786	314,922	+ 57,864	58,135	102,902	- 44,767	70,999	71,387	- 388	26,448	48,502	- 22,054	- 9,344
1997	418,541	352,422	+ 66,119	68,650	114,330	- 45,680	79,207	83,700	- 4,493	28,425	51,129	- 22,705	- 6,759
1998	446,534	376,111	+ 70,424	73,723	120,272	- 46,550	82,478	93,413	- 10,935	28,747	51,751	- 23,003	- 10,065
1999	466,271	399,236	+ 67,034	75,828	131,294	- 55,466	92,598	107,134	- 14,537	36,152	57,223	- 21,071	- 24,039
2000	544,900	481,768	+ 63,132	88,800	148,083	- 59,283	121,749	134,016	- 12,267	38,221	62,262	- 24,041	- 32,459
2001	579,579	480,210	+ 99,370	92,889	157,765	- 64,875	107,322	122,925	- 15,603	47,976	70,677	- 22,700	- 3,809
2002	590,150	451,658	+ 138,492	104,809	153,044	- 48,234	108,968	132,105	- 23,137	47,887	71,558	- 23,671	+ 43,450
2003	595,959	469,038	+ 126,921	106,188	151,741	- 45,553	111,490	134,394	- 22,903	57,192	82,058	- 24,866	+ 33,599
2004	657,757	508,724	+ 149,033	122,233	157,256	- 35,023	142,507	128,802	+ 13,705	45,446	69,643	- 24,198	+ 103,518
2005	707,026	554,305	+ 152,721	131,080	168,620	- 37,541	167,406	148,569	+ 18,837	48,740	74,587	- 25,847	+ 108,171
2006	801,176	643,764	+ 157,412	146,926	178,498	- 31,572	208,809	168,481	+ 40,328	47,625	72,839	- 25,214	+ 140,954
2007	879,585	684,812	+ 194,773	156,437	188,434	- 31,997	246,403	210,163	+ 36,240	47,534	76,941	- 29,407	+ 169,608
2008	896,892	718,041	+ 178,851	166,834	195,375	- 28,541	198,723	173,961	+ 24,762	50,173	80,217	- 30,044	+ 145,028
2009	724,643	588,007	+ 136,636	162,487	179,449	- 16,962	184,708	128,813	+ 55,894	46,828	77,609	- 30,781	+ 144,787
2010	858,872	699,544	+ 159,328	177,727	202,874	- 25,147	201,688	149,342	+ 52,346	47,436	83,752	- 36,317	+ 150,210
2011	959,728	795,556	+ 164,171	187,955	218,112	- 30,158	220,973	150,637	+ 70,336	55,538	87,061	- 31,523	+ 172,827
2012	994,229	793,313	+ 200,916	204,247	235,672	- 31,425	205,301	138,005	+ 67,297	57,202	92,713	- 35,511	+ 201,277
2013	984,846	784,895	+ 199,951	213,400	247,658	- 34,257	191,973	125,103	+ 66,870	64,520	104,738	- 40,218	+ 192,346
2014	1,014,523	796,008	+ 218,515	233,975	256,916	- 22,941	189,420	127,619	+ 61,801	61,785	103,228	- 41,443	+ 215,932
2015	1,060,341	815,287	+ 245,054	258,520	274,755	- 16,236	191,364	131,324	+ 60,040	71,152	109,923	- 38,770	+ 250,088
2016	1,063,695	813,297	+ 250,397	270,545	288,890	- 18,346	217,152	126,283	+ 90,869	64,727	102,985	- 38,259	+ 284,662
2017	1,124,249	867,209	+ 257,041	290,027	311,238	- 21,212	211,873	128,009	+ 83,864	66,367	117,332	- 50,964	+ 268,729
2018	1,158,522	939,783	+ 218,739	308,653	322,664	- 14,010	255,717	121,537	+ 134,180	68,879	118,600	- 49,722	+ 289,187
2019	1,173,898	960,697	+ 213,201	327,246	341,689	- 14,443	251,247	121,153	+ 130,094	79,538	129,914	- 50,375	+ 278,477
2020	1,061,150	883,409	+ 177,742	292,006	285,373	+ 6,633	188,818	101,757	+ 87,061	81,180	134,586	- 53,406	+ 218,031
2021	1,221,066	1,033,406	+ 187,660	348,863	345,030	+ 3,833	248,760	125,900	+ 122,860	98,680	158,627	- 59,947	+ 254,406
2022	1,401,916	1,268,684	+ 133,232	419,691	451,726	- 32,035	303,136	183,855	+ 119,281	106,377	174,818	- 68,441	+ 152,037
2023	1,392,316	1,165,202	+ 227,114	418,631	482,069	- 63,437	407,562	270,775	+ 136,787	113,251	180,922	- 67,671	+ 232,793
2024	1,365,143	1,129,637	+ 235,506	435,907	509,930	- 74,023	430,870	281,874	+ 148,995	125,129	188,943	- 63,813	+ 246,665

II. Current account

1. Overview



II. Current account

2. Goods

a) Overview

€ million

Period	Goods													
	Receipts	Ex- penditure	Balance	General merchandise						Supplementary trade items				
				Receipts	Ex- penditure	Balance	Foreign trade ¹			Exports		Deductions ²		
							Exports	Imports	Balance	Total	Ad- ditions ²	Total	of which:	
													Exports for pro- cessing ³	Exports after processing ³
1	2	3	4	5	6	7	8	9	10	11	12	13	14	
2010	858,872	699,544	+ 159,328	840,768	694,707	+ 146,061	951,959	797,097	+ 154,863	-111,191	21,024	-132,215	-11,532	-42,650
2011	959,728	795,556	+ 164,171	938,841	789,040	+ 149,801	1,061,225	902,523	+ 158,702	-122,384	27,169	-149,553	-13,843	-42,616
2012	994,229	793,313	+ 200,916	969,252	786,449	+ 182,802	1,092,627	899,405	+ 193,222	-123,375	36,057	-159,432	-14,403	-43,835
2013	984,846	784,895	+ 199,951	955,273	775,410	+ 179,862	1,088,025	890,393	+ 197,632	-132,753	29,411	-162,163	-14,775	-42,401
2014	1,014,523	796,008	+ 218,515	984,319	786,581	+ 197,738	1,123,746	910,145	+ 213,601	-139,427	32,739	-172,166	-16,008	-44,130
2015	1,060,341	815,287	+ 245,054	1,028,508	803,010	+ 225,498	1,193,555	949,245	+ 244,310	-165,048	30,368	-195,415	-18,083	-49,610
2016	1,063,695	813,297	+ 250,397	1,027,785	800,700	+ 227,085	1,203,833	954,917	+ 248,916	-176,048	30,295	-206,343	-17,197	-48,421
2017	1,124,249	867,209	+ 257,041	1,089,512	854,323	+ 235,189	1,278,958	1,031,013	+ 247,946	-189,446	28,030	-217,476	-16,851	-43,308
2018	1,158,522	939,783	+ 218,739	1,131,130	930,137	+ 200,993	1,317,440	1,088,720	+ 228,720	-186,310	29,682	-215,992	-14,720	-42,006
2019	1,173,898	960,697	+ 213,201	1,135,186	951,037	+ 184,149	1,328,152	1,104,141	+ 224,010	-192,965	34,423	-227,388	-16,752	-43,468
2020	1,061,150	883,409	+ 177,742	1,030,048	871,082	+ 158,966	1,206,928	1,026,502	+ 180,427	-176,881	32,519	-209,400	-15,700	-35,504
2021	1,221,066	1,033,406	+ 187,660	1,188,682	1,018,065	+ 170,617	1,371,397	1,195,499	+ 175,898	-182,715	50,330	-233,045	-15,980	-39,465
2022	1,401,916	1,268,684	+ 133,232	1,358,826	1,250,802	+ 108,024	1,594,342	1,506,254	+ 88,088	-235,515	59,278	-294,794	-14,413	-51,500
2023	1,392,316	1,165,202	+ 227,114	1,346,123	1,157,179	+ 188,945	1,575,209	1,357,465	+ 217,744	-229,085	59,474	-288,559	-14,904	-49,381
2024	1,365,143	1,129,637	+ 235,506	1,317,321	1,120,034	+ 197,287	1,556,030	1,316,934	+ 239,096	-238,709	55,641	-294,350	-15,657	-47,909
2022 Q2	347,794	317,700	+ 30,094	337,304	313,053	+ 24,250	398,452	382,214	+ 16,238	- 61,148	14,646	- 75,794	- 3,603	-15,473
Q3	358,237	327,150	+ 31,087	345,801	323,123	+ 22,678	405,601	391,169	+ 14,432	- 59,799	14,615	- 74,414	- 3,822	-10,502
Q4	357,700	325,245	+ 32,455	346,960	320,962	+ 25,998	406,637	377,477	+ 29,160	- 59,677	16,738	- 76,415	- 3,428	-14,028
2023 Q1	362,096	307,676	+ 54,420	352,232	305,511	+ 46,721	412,877	359,769	+ 53,107	- 60,644	15,134	- 75,779	- 4,060	-12,319
Q2	347,375	294,719	+ 52,656	337,821	292,531	+ 45,290	393,444	343,411	+ 50,033	- 55,624	14,858	- 70,481	- 3,883	-13,118
Q3	339,227	280,741	+ 58,486	326,898	278,885	+ 48,013	381,648	326,105	+ 55,544	- 54,751	13,567	- 68,318	- 3,459	-10,583
Q4	343,618	282,066	+ 61,552	329,173	280,252	+ 48,921	387,239	328,179	+ 59,060	- 58,067	15,915	- 73,981	- 3,502	-13,360
2024 Q1	350,611	281,893	+ 68,718	338,540	279,927	+ 58,614	397,789	329,984	+ 67,805	- 59,249	13,568	- 72,817	- 3,985	-10,796
Q2	350,613	283,686	+ 66,928	336,856	281,505	+ 55,351	395,284	329,541	+ 65,743	- 58,429	14,239	- 72,668	- 4,205	-11,864
Q3	336,416	280,830	+ 55,586	325,905	278,600	+ 47,305	384,290	327,744	+ 56,546	- 58,385	13,455	- 71,839	- 3,736	-11,693
Q4	327,502	283,228	+ 44,274	316,020	280,003	+ 36,017	378,666	329,664	+ 49,002	- 62,647	14,379	- 77,026	- 3,730	-13,556
2025 Q1	348,681	292,371	+ 56,310	337,185	287,669	+ 49,516	395,193	340,743	+ 54,451	- 58,009	14,234	- 72,243	- 4,211	-11,124
2022 Oct.	117,960	111,160	+ 6,800	115,011	109,465	+ 5,546	135,670	129,180	+ 6,490	- 20,659	4,712	- 25,371	- 1,238	- 4,312
Nov.	128,501	115,420	+ 13,081	124,713	114,014	+ 10,698	145,575	133,425	+ 12,150	- 20,862	5,116	- 25,978	- 1,165	- 4,133
Dec.	111,239	98,664	+ 12,574	107,237	97,483	+ 9,754	125,393	114,872	+ 10,520	- 18,156	6,910	- 25,066	- 1,025	- 5,583
2023 Jan.	112,334	101,293	+ 11,041	109,962	100,467	+ 9,495	128,947	118,244	+ 10,703	- 18,985	4,986	- 23,971	- 1,335	- 3,048
Feb.	115,184	96,328	+ 18,856	112,372	95,719	+ 16,653	132,058	113,501	+ 18,557	- 19,686	4,649	- 24,335	- 1,300	- 4,387
Mar.	134,579	110,056	+ 24,523	129,898	109,325	+ 20,573	151,872	128,025	+ 23,847	- 21,973	5,499	- 27,473	- 1,425	- 4,884
Apr.	106,374	91,523	+ 14,851	103,669	90,983	+ 12,776	120,317	106,315	+ 14,003	- 16,648	4,678	- 21,326	- 1,085	- 3,771
May	116,865	100,949	+ 15,916	113,616	100,087	+ 13,530	132,706	118,915	+ 13,791	- 19,090	4,910	- 23,999	- 1,439	- 4,615
June	124,136	102,247	+ 21,889	120,535	101,551	+ 18,984	140,421	118,181	+ 22,239	- 19,886	5,271	- 25,156	- 1,359	- 4,732
July	112,890	94,341	+ 18,549	108,487	93,791	+ 14,696	127,203	110,211	+ 16,993	- 18,716	4,567	- 23,283	- 1,111	- 4,052
Aug.	110,161	90,490	+ 19,670	106,695	89,774	+ 16,921	124,270	105,101	+ 19,169	- 17,576	4,479	- 22,054	- 1,213	- 3,321
Sep.	116,177	95,910	+ 20,267	111,716	95,320	+ 16,395	130,175	110,793	+ 19,382	- 18,459	4,521	- 22,980	- 1,135	- 3,211
Oct.	118,825	97,599	+ 21,226	114,019	96,950	+ 17,070	132,971	113,508	+ 19,463	- 18,952	4,967	- 23,919	- 1,216	- 4,361
Nov.	123,823	100,247	+ 23,576	118,415	99,625	+ 18,790	140,112	116,567	+ 23,544	- 21,696	5,004	- 26,700	- 1,301	- 4,413
Dec.	100,969	84,220	+ 16,749	96,738	83,677	+ 13,061	114,157	98,104	+ 16,052	- 17,419	5,943	- 23,362	- 985	- 4,587
2024 Jan.	113,711	91,724	+ 21,987	110,288	91,094	+ 19,194	129,426	108,316	+ 21,110	- 19,138	4,746	- 23,884	- 1,323	- 3,066
Feb.	116,668	93,484	+ 23,183	112,988	92,811	+ 20,177	132,638	108,763	+ 23,875	- 19,650	4,301	- 23,951	- 1,299	- 3,562
Mar.	120,233	96,684	+ 23,548	115,264	96,021	+ 19,243	135,725	112,905	+ 22,820	- 20,461	4,521	- 24,982	- 1,363	- 4,168
Apr.	122,714	99,274	+ 23,440	118,248	98,577	+ 19,671	138,792	115,938	+ 22,854	- 20,544	4,919	- 25,463	- 1,515	- 4,504
May	114,892	91,366	+ 23,526	109,623	90,645	+ 18,978	128,064	106,418	+ 21,645	- 18,440	4,703	- 23,143	- 1,277	- 3,474
June	113,007	93,047	+ 19,961	108,984	92,283	+ 16,702	128,429	107,185	+ 21,244	- 19,445	4,617	- 24,061	- 1,414	- 3,886
July	116,435	96,130	+ 20,306	112,851	95,240	+ 17,612	133,593	113,929	+ 19,665	- 20,742	4,642	- 25,384	- 1,329	- 4,496
Aug.	105,615	88,718	+ 16,898	102,215	88,089	+ 14,125	120,531	102,534	+ 17,997	- 18,316	4,271	- 22,587	- 1,171	- 3,355
Sep.	114,365	95,983	+ 18,382	110,839	95,271	+ 15,568	130,166	111,281	+ 18,885	- 19,327	4,542	- 23,868	- 1,236	- 3,843
Oct.	115,881	100,868	+ 15,013	113,249	99,735	+ 13,514	132,704	118,081	+ 14,623	- 19,454	4,751	- 24,205	- 1,420	- 4,051
Nov.	114,180	95,373	+ 18,807	109,199	94,173	+ 15,026	131,403	110,990	+ 20,413	- 22,204	4,536	- 26,740	- 1,305	- 4,012
Dec.	97,440	86,987	+ 10,454	93,571	86,094	+ 7,477	114,560	100,593	+ 13,966	- 20,989	5,092	- 26,081	- 1,006	- 5,493
2025 Jan.	109,746	96,074	+ 13,672	106,597	94,511	+ 12,086	125,081	112,324	+ 12,757	- 18,484	4,431	- 22,915	- 1,278	- 2,980
Feb.	115,682	95,462	+ 20,220	111,505	93,968	+ 17,536	129,975	111,600	+ 18,375	- 18,470	5,338	- 23,808	- 1,419	- 3,945
Mar.	123,254	100,836	+ 22,418	119,083	99,190	+ 19,894	140,138	116,819	+ 23,319	- 21,054	4,466	- 25,520	- 1,514	- 4,199

¹ Special trade according to the official foreign trade statistics (source: Federal Statistical Office). ² Deductions are the result of goods crossing a border without a change of ownership; additions are the result of ownership without border being crossed. From reference month April 2022 deductions for quasi-transit

II. Current account

2. Goods

a) Overview

€ million

Imports						Net exports of goods under merchanding				Non-monetary gold			Period
Total	Additions 2	Deductions 2	of which:			Balance	Total	Goods acquired under merchanding 4	Goods sold under merchanding	Receipts	Expenditure	Balance	
			Total	Imports for processing 3	Imports after processing 3								Cif costs of imports
15	16	17	18	19	20	21	22	23	24	25	26	27	
-102,390	33,402	- 135,792	- 36,724	- 13,895	- 14,910	- 8,801	+ 12,720	- 78,648	91,369	5,383	4,837	+ 546	2010
-113,483	39,635	- 153,117	- 35,336	- 15,054	- 16,140	- 8,902	+ 13,648	- 88,011	101,659	7,239	6,516	+ 723	2011
-112,956	40,882	- 153,837	- 27,645	- 15,347	- 17,841	- 10,420	+ 17,393	- 90,731	108,123	7,585	6,864	+ 721	2012
-114,983	51,164	- 166,146	- 29,308	- 16,111	- 20,976	- 17,770	+ 20,824	- 93,299	114,123	8,749	9,484	- 735	2013
-123,563	54,693	- 178,256	- 30,971	- 17,717	- 21,997	- 15,863	+ 21,453	- 98,463	119,916	8,751	9,427	- 676	2014
-146,235	50,237	- 196,472	- 32,616	- 19,824	- 21,199	- 18,813	+ 22,801	- 117,862	140,663	9,033	12,277	- 3,244	2015
-154,217	51,184	- 205,402	- 28,659	- 20,123	- 21,727	- 21,830	+ 24,078	- 123,448	147,527	11,831	12,598	- 766	2016
-176,689	50,658	- 227,348	- 28,683	- 20,461	- 22,512	- 12,757	+ 25,299	- 133,747	159,047	9,438	12,885	- 3,448	2017
-158,584	61,725	- 220,309	- 30,429	- 17,739	- 22,467	- 27,726	+ 19,854	- 155,142	174,997	7,538	9,646	- 2,109	2018
-153,104	62,834	- 215,937	- 23,014	- 17,102	- 21,993	- 39,862	+ 27,998	- 157,513	185,511	10,714	9,660	+ 1,054	2019
-155,420	56,095	- 211,515	- 23,937	- 15,366	- 24,445	- 21,461	+ 21,706	- 141,546	163,252	9,396	12,327	- 2,931	2020
-177,434	77,404	- 254,839	- 26,981	- 15,593	- 38,941	- 5,281	+ 25,302	- 200,725	226,027	7,083	15,342	- 8,259	2021
-255,452	101,532	- 356,984	- 44,895	- 18,105	- 50,963	+ 19,937	+ 33,193	- 219,808	253,001	9,897	17,882	- 7,985	2022
-200,286	98,301	- 298,587	- 37,700	- 18,767	- 45,829	- 28,799	+ 34,919	- 208,759	243,678	11,273	8,023	+ 3,250	2023
-196,900	97,316	- 294,216	- 34,878	- 15,903	- 47,222	- 41,809	+ 31,896	- 209,255	241,151	15,925	9,602	+ 6,323	2024
- 69,161	25,354	- 94,515	- 18,419	- 4,490	- 12,626	+ 8,013	+ 7,522	- 56,704	64,226	2,969	4,646	- 1,678	2022 Q2
- 68,046	26,767	- 94,813	- 8,467	- 4,415	- 12,426	+ 8,246	+ 10,229	- 51,702	61,930	2,207	4,027	- 1,820	Q3
- 56,515	27,916	- 84,431	- 7,779	- 4,640	- 12,689	- 3,162	+ 8,144	- 57,812	65,956	2,596	4,283	- 1,687	Q4
- 54,258	24,568	- 78,826	- 9,090	- 4,955	- 12,583	- 6,386	+ 7,474	- 50,420	57,893	2,390	2,165	+ 225	2023 Q1
- 50,881	24,701	- 75,582	- 9,588	- 5,406	- 11,552	- 4,743	+ 7,183	- 53,380	60,562	2,371	2,188	+ 184	Q2
- 47,220	24,247	- 71,467	- 10,119	- 4,610	- 10,811	- 7,531	+ 10,161	- 49,537	59,699	2,168	1,856	+ 312	Q3
- 47,928	24,785	- 72,712	- 8,904	- 3,797	- 10,883	- 10,139	+ 10,102	- 55,422	65,524	4,343	1,814	+ 2,529	Q4
- 50,058	23,274	- 73,332	- 9,430	- 3,859	- 11,288	- 9,191	+ 8,265	- 49,374	57,639	3,806	1,966	+ 1,840	2024 Q1
- 48,036	23,895	- 71,931	- 8,205	- 3,936	- 11,733	- 10,392	+ 9,335	- 53,102	62,437	4,423	2,181	+ 2,242	Q2
- 49,144	24,695	- 73,839	- 8,601	- 3,908	- 11,946	- 9,241	+ 7,512	- 52,466	59,978	2,999	2,230	+ 769	Q3
- 49,662	25,452	- 75,114	- 8,642	- 4,201	- 12,256	- 12,985	+ 6,786	- 54,312	61,098	4,697	3,225	+ 1,472	Q4
- 53,074	25,453	- 78,527	- 8,242	- 4,583	- 11,239	- 4,935	+ 7,597	- 45,865	53,462	3,900	4,703	- 803	2025 Q1
- 19,715	8,976	- 28,691	- 2,817	- 1,710	- 4,189	- 944	+ 2,138	- 19,244	21,382	812	1,696	- 884	2022 Oct.
- 19,411	9,099	- 28,510	- 2,839	- 1,628	- 4,370	- 1,452	+ 2,812	- 20,078	22,890	977	1,406	- 430	Nov.
- 17,389	9,841	- 27,230	- 2,124	- 1,302	- 4,130	- 766	+ 3,194	- 18,490	21,684	808	1,181	- 374	Dec.
- 17,777	8,505	- 26,282	- 2,857	- 1,537	- 4,388	- 1,208	+ 1,667	- 16,491	18,158	705	826	- 121	2023 Jan.
- 17,781	7,644	- 25,425	- 3,622	- 1,508	- 4,030	- 1,904	+ 2,182	- 16,215	18,397	629	609	+ 21	Feb.
- 18,700	8,419	- 27,118	- 2,610	- 1,910	- 4,165	- 3,274	+ 3,625	- 17,713	21,338	1,056	730	+ 325	Mar.
- 15,422	7,821	- 23,243	- 2,831	- 1,594	- 3,847	- 1,226	+ 2,118	- 15,153	17,271	586	630	- 44	Apr.
- 18,828	8,145	- 26,973	- 3,545	- 1,899	- 3,917	- 261	+ 2,293	- 18,659	20,952	956	862	+ 94	May
- 16,631	8,735	- 25,366	- 3,212	- 1,912	- 3,787	- 3,255	+ 2,772	- 19,567	22,339	829	696	+ 133	June
- 16,420	7,820	- 24,240	- 3,848	- 1,728	- 3,480	- 2,296	+ 3,542	- 15,655	19,197	861	550	+ 311	July
- 15,327	8,069	- 23,396	- 3,029	- 1,556	- 3,710	- 2,248	+ 2,836	- 16,603	19,438	630	717	- 86	Aug.
- 15,473	8,358	- 23,831	- 3,242	- 1,325	- 3,622	- 2,986	+ 3,784	- 17,279	21,063	677	590	+ 88	Sep.
- 16,558	8,242	- 24,800	- 3,804	- 1,341	- 3,688	- 2,394	+ 4,098	- 17,740	21,838	708	649	+ 58	Oct.
- 16,942	8,446	- 25,388	- 2,791	- 1,323	- 3,497	- 4,755	+ 3,395	- 20,524	23,919	2,013	621	+ 1,391	Nov.
- 14,428	8,097	- 22,525	- 2,308	- 1,133	- 3,699	- 2,991	+ 2,608	- 17,158	19,766	1,623	543	+ 1,080	Dec.
- 17,222	7,617	- 24,839	- 3,227	- 1,241	- 3,596	- 1,915	+ 1,980	- 15,737	17,717	1,442	630	+ 812	2024 Jan.
- 15,951	7,836	- 23,787	- 3,043	- 1,333	- 3,664	- 3,698	+ 2,614	- 16,272	18,886	1,066	673	+ 393	Feb.
- 16,884	7,821	- 24,705	- 3,160	- 1,285	- 4,027	- 3,577	+ 3,671	- 17,365	21,036	1,298	663	+ 635	Mar.
- 17,361	7,998	- 25,359	- 3,607	- 1,422	- 3,835	- 3,183	+ 2,552	- 16,893	19,445	1,914	696	+ 1,218	Apr.
- 15,773	8,149	- 23,922	- 2,524	- 1,237	- 3,998	- 2,667	+ 3,896	- 18,655	22,550	1,373	721	+ 653	May
- 14,902	7,748	- 22,651	- 2,074	- 1,277	- 3,900	- 4,542	+ 2,887	- 17,555	20,442	1,136	764	+ 372	June
- 18,689	8,284	- 26,973	- 3,633	- 1,356	- 4,092	- 2,053	+ 2,438	- 18,697	21,135	1,146	890	+ 256	July
- 14,445	7,940	- 22,384	- 2,025	- 1,154	- 3,933	- 3,872	+ 2,517	- 17,009	19,526	884	629	+ 256	Aug.
- 16,010	8,471	- 24,481	- 2,943	- 1,397	- 3,921	- 3,317	+ 2,557	- 16,760	19,318	969	712	+ 257	Sep.
- 18,346	8,291	- 26,636	- 3,751	- 1,543	- 4,249	- 1,109	+ 1,275	- 19,406	20,681	1,357	1,132	+ 224	Oct.
- 16,817	8,213	- 25,030	- 2,625	- 1,454	- 4,249	- 5,387	+ 2,800	- 18,242	21,042	2,181	1,200	+ 981	Nov.
- 14,499	8,949	- 23,448	- 2,266	- 1,203	- 3,759	- 6,490	+ 2,711	- 16,664	19,375	1,159	893	+ 266	Dec.
- 17,813	8,668	- 26,481	- 2,348	- 1,461	- 3,965	- 671	+ 1,968	- 13,766	15,734	1,181	1,563	- 382	2025 Jan.
- 17,632	8,116	- 25,748	- 2,863	- 1,525	- 3,618	- 838	+ 2,862	- 15,238	18,100	1,315	1,494	- 178	Feb.
- 17,629	8,669	- 26,298	- 3,031	- 1,597	- 3,656	- 3,425	+ 2,767	- 16,861	19,628	1,403	1,646	- 243	Mar.

trade are included. The values of the deductions are shown with a negative sign. **3** Incl. joint projects. The fees for processing goods are recorded under manufacturing services. **4** Negative receipts.

II. Current account

2. Goods

b) Special trade, by category of goods *

€ million

Exports (fob)							
Total 1	Selected main industrial groupings 2 3			Selected categories 3			
	Intermediate goods	Capital goods	Durable and non-durable consumer goods	Chemical and pharmaceutical products	Machinery and equipment	Computers, electronic and optical products and electrical equipment	Motor vehicles, trailers and semi-trailers
1	2	3	4	5	6	7	8

Product classification for Production Statistics, 2002 edition (GP 2002)

Item no				24		29		30 to 33		34	
Period											
2001	638,268	197,589	298,430	100,502	82,432	93,357	110,142	118,277			
2002	651,320	199,538	307,765	103,161	81,178	94,583	109,756	127,886			
2003	664,455	201,209	307,184	109,553	86,163	93,941	112,249	130,813			
2004	731,544	224,927	336,904	118,611	96,352	105,538	128,085	138,034			
2005	786,266	240,356	361,959	127,370	104,815	114,110	135,855	154,123			
2006	893,042	277,908	402,744	143,579	119,292	129,974	148,850	166,472			
2007	965,236	302,629	432,071	158,801	129,528	142,132	153,518	184,123			

Product classification for Production Statistics, 2009 edition (GP 2009)

Item no				20 and 21		28		26 and 27		29	
Period											
2008	984,140	309,027	432,245	170,568	139,195	160,494	142,002	169,502			
2009	803,312	250,757	343,521	145,666	123,225	124,595	117,267	122,925			
2010	951,959	307,178	414,026	157,815	142,357	141,803	143,164	160,975			
2011	1,061,225	342,546	466,803	169,621	153,179	163,024	152,443	185,510			
2012	1,092,627	342,160	487,899	177,639	162,079	165,633	153,019	191,092			
2013	1,088,025	337,762	484,430	184,295	163,569	164,053	152,006	190,244			
2014	1,123,746	344,066	503,143	191,874	169,003	166,145	157,890	203,434			
2015	1,193,555	352,482	546,398	205,592	178,154	170,162	169,829	226,730			
2016	1,203,833	355,479	553,563	211,705	177,817	170,414	176,885	228,429			
2017	1,278,876	386,634	583,796	228,712	191,731	185,746	196,356	235,168			
2018	1,317,440	401,347	593,228	239,428	202,213	195,085	205,067	230,514			
2019	1,328,152	400,420	596,813	244,673	201,988	196,658	208,349	225,568			
2020	1,206,928	377,069	513,633	244,568	200,802	176,743	195,853	188,553			
2021	1,371,397	450,615	562,880	274,209	240,900	196,899	219,337	211,813			
2022	1,594,342	515,264	613,821	337,535	286,581	212,328	243,366	247,515			
2023	1,575,209	480,744	658,721	333,862	255,139	227,353	247,976	272,798			
2024	1,548,298	475,366	647,883	345,259	259,519	221,587	240,548	265,664			
2023 Q2	393,444	121,814	167,320	80,075	61,937	57,581	61,120	69,997			
Q3	381,648	115,461	157,924	83,019	62,328	55,660	60,989	64,577			
Q4	387,239	112,436	166,660	82,752	59,897	56,061	61,608	68,072			
2024 Q1	393,151	124,013	162,511	86,680	67,909	56,493	60,866	68,500			
Q2	393,879	122,672	166,446	84,597	65,123	56,573	59,905	69,520			
Q3	383,933	116,597	159,211	88,244	65,513	54,782	59,746	64,860			
Q4	377,335	112,084	159,715	85,738	60,973	53,739	60,032	62,784			
2025 Q1	395,448	123,623	160,952	90,190	69,006	54,735	61,653	66,578			
2023 Dec.	114,157	31,751	50,145	23,666	16,800	17,611	18,509	18,594			
2024 Jan.	126,694	41,718	49,756	28,851	22,642	17,801	20,177	20,465			
Feb.	132,156	41,076	55,616	28,698	22,395	19,115	20,171	24,013			
Mar.	134,301	41,218	57,139	29,130	22,872	19,577	20,517	24,022			
Apr.	138,730	43,095	59,830	28,991	22,350	19,952	20,701	25,196			
May	126,657	39,697	52,364	27,801	21,365	17,886	19,149	21,785			
June	128,492	39,881	54,252	27,805	21,408	18,735	20,055	22,539			
July	133,172	40,840	54,876	30,225	22,959	19,685	20,350	22,120			
Aug.	120,256	37,132	48,347	28,633	21,494	16,833	18,814	19,704			
Sep.	130,504	38,625	55,988	29,385	21,060	18,264	20,582	23,036			
Oct.	132,912	40,514	56,087	29,964	21,029	18,628	20,840	23,747			
Nov.	132,595	39,727	55,540	30,520	22,219	18,481	20,849	22,588			
Dec.	111,828	31,843	48,087	25,254	17,726	16,629	18,343	16,449			
2025 Jan.	125,190	40,955	48,759	28,766	22,042	16,854	19,792	20,182			
Feb.	129,997	39,933	53,558	29,543	22,744	17,908	19,765	22,255			
Mar.	140,261	42,735	58,635	31,880	24,219	19,972	22,096	24,141			

* Sources: Federal Statistical Office and Bundesbank calculations on the basis of data provided by the Federal Statistical Office. **1** Also includes goods which cannot be classified and additional estimates for transactions which failed to be reported, and transactions which do not have to be reported statistically. From January 2007, excluding repair and maintenance work. **2** The allocation of groups of goods from GP 2002 to main industrial groupings (MIGs) is carried out pursuant to Regulations (EC)

No 586/2001. For GP 2009, this classification is based on Regulation (EC) No 656/2007. **3** As of January 2010, figures include additional estimates for transactions which failed to be reported, and transactions which do not have to be reported statistically. **4** The following principal changes have been made in comparison with GP 2002: intermediate goods including electronic inductors, electric motors, generators and transformers, excluding tools for construction and mining machines, electrical equipment for motor

II. Current account

2. Goods

b) Special trade, by category of goods *

€ million

Imports (cif)								
Total 1	Selected main industrial groupings 2 3			Selected categories 3				
	Intermediate goods	Capital goods	Durable and non-durable consumer goods	Chemical and pharmaceutical products	Machinery and equipment	Computers, electronic and optical products and electrical equipment	Motor vehicles, trailers and semi-trailers	
9	10	11	12	13	14	15	16	
Product classification for Production Statistics, 2002 edition (GP 2002)								
				24	29	30 bis 33	34	Item no
								Period
542,774	166,146	174,533	112,202	58,532	40,373	110,707	52,533	2001
518,532	150,148	167,938	118,725	57,896	38,316	102,500	55,831	2002
534,534	152,400	171,367	118,959	58,820	38,760	102,281	59,461	2003
575,448	170,809	182,615	123,381	66,464	41,495	111,012	62,104	2004
628,087	182,904	195,444	130,548	73,297	45,199	117,505	66,314	2005
733,994	218,398	227,699	143,419	83,825	52,804	132,713	73,228	2006
769,887	244,511	229,886	154,107	93,015	57,789	132,742	78,884	2007
Product classification for Production Statistics, 2009 edition (GP 2009) 4								
				20 und 21	28	26 und 27	29	Item no
								Period
805,842	246,051	227,224	160,857	97,417	68,801	119,786	75,480	2008
664,615	185,560	200,850	142,234	86,840	52,486	103,228	64,666	2009
797,097	247,202	234,871	154,178	101,593	61,244	131,257	70,212	2010
902,523	279,780	255,825	167,371	111,259	71,808	134,220	81,925	2011
899,405	266,920	256,767	167,755	111,371	68,822	133,375	82,454	2012
890,393	261,243	254,339	174,432	110,208	67,799	129,088	81,050	2013
910,145	269,685	268,467	183,584	115,352	70,803	138,145	87,324	2014
949,245	282,389	295,419	200,072	122,950	74,371	155,450	98,359	2015
954,917	280,707	304,379	207,423	123,151	76,742	159,575	106,100	2016
1,030,977	308,870	323,167	220,385	133,601	82,116	175,074	115,909	2017
1,088,720	330,856	336,294	226,210	146,566	88,096	183,031	119,860	2018
1,104,141	321,964	352,468	233,006	145,617	88,192	185,427	128,681	2019
1,026,502	302,835	322,946	243,396	145,065	80,273	183,809	112,664	2020
1,195,499	379,292	345,073	264,914	168,320	92,582	212,669	115,323	2021
1,506,254	482,935	372,485	334,326	223,348	105,923	254,812	132,944	2022
1,357,465	415,723	391,507	308,375	179,197	107,288	256,010	150,867	2023
1,307,843	406,322	385,996	328,205	185,391	102,621	248,746	147,582	2024
343,411	108,768	100,837	74,425	44,687	28,213	64,010	39,171	2023 Q2
326,105	99,920	93,524	75,830	43,481	25,774	62,446	36,200	Q3
328,179	92,108	96,392	77,364	41,612	24,706	63,540	37,568	Q4
325,030	101,402	96,985	80,718	47,423	26,332	60,740	37,838	2024 Q1
328,292	103,247	98,645	78,737	45,749	26,488	60,638	38,721	Q2
326,806	104,361	93,466	83,610	48,316	25,285	62,619	34,246	Q3
327,715	97,312	96,901	85,140	43,903	24,516	64,749	36,777	Q4
340,554	105,890	97,846	87,914	48,086	26,480	63,530	36,220	2025 Q1
98,104	25,522	28,647	22,729	11,992	7,143	18,229	10,276	2023 Dec.
104,479	32,392	30,515	26,515	15,628	8,321	20,293	11,775	2024 Jan.
108,073	34,035	32,616	26,653	15,378	9,020	19,988	12,703	Feb.
112,478	34,975	33,854	27,550	16,417	8,991	20,458	13,360	Mar.
115,276	36,641	34,306	27,859	16,847	9,251	21,196	13,607	Apr.
106,147	32,933	31,563	25,617	14,469	8,557	19,561	12,636	May
106,869	33,672	32,776	25,261	14,432	8,680	19,881	12,478	June
112,953	37,291	31,234	28,827	18,550	9,015	20,675	11,406	July
101,959	31,493	28,994	26,091	14,165	7,600	19,644	10,385	Aug.
111,894	35,578	33,237	28,692	15,600	8,670	22,301	12,455	Sep.
118,554	36,302	34,770	31,389	16,722	8,939	22,998	13,614	Oct.
112,194	33,386	34,026	28,852	14,738	8,355	22,355	13,388	Nov.
96,967	27,623	28,104	24,899	12,443	7,222	19,396	9,775	Dec.
112,349	34,564	30,690	29,736	16,130	8,401	21,574	11,066	2025 Jan.
111,367	34,581	32,159	28,399	15,839	8,590	20,006	11,746	Feb.
116,838	36,745	34,997	29,779	16,117	9,489	21,949	13,408	Mar.

vehicles and motor vehicle engines; capital goods including watches and clocks, seats for motor vehicles, tools for construction and mining machines, electrical equipment for motor vehicles and motor vehicle engines, excluding electronic inductors, electric motors, generators and transformers, consumer goods excluding printed goods, watches and clocks, seats for motor vehicles; chemical and pharmaceutical products excluding magnetic and optical media; machinery and equipment including office

machinery, pistons and piston rings, carburetors, dumper trucks for use on building sites, tools for construction and mining machines, excluding weapons and ammunition; computers etc excluding office machinery; motor vehicles, trailers and semi-trailers including seats for motor vehicles, excluding dumper trucks for use on building sites, pistons und piston rings, carburetors.

II. Current account

3. Services

a) Overview

€ million

Period	Services 1. 2			Manufacturing services 3			Transport 4			Travel 5			
	Receipts	Expenditure	Balance	Receipts	Expenditure	Balance	Receipts	Expenditure	Balance	Receipts	Expenditure		
											Total	Business	Personal
1	2	3	4	5	6	7	8	9	10	11	12	13	
2010	177,727	202,874	- 25,147	4,250	2,964	+ 1,286	45,310	52,028	- 6,718	26,159	58,934	7,957	50,977
2011	187,955	218,112	- 30,158	4,380	3,558	+ 822	46,734	53,954	- 7,220	27,930	61,686	7,631	54,055
2012	204,247	235,672	- 31,425	4,209	3,701	+ 508	49,065	57,303	- 8,238	29,683	65,105	6,686	58,419
2013	213,400	247,658	- 34,257	3,586	3,178	+ 408	51,006	58,354	- 7,347	31,081	68,794	7,303	61,491
2014	233,975	256,916	- 22,941	6,083	3,739	+ 2,344	51,548	56,167	- 4,619	32,609	70,261	7,786	62,475
2015	258,520	274,755	- 16,236	.	.	+ 2,471	56,064	59,023	- 2,959	33,265	69,861	6,877	62,984
2016	270,545	288,890	- 18,346	6,918	4,776	+ 2,142	55,282	58,616	- 3,335	33,838	72,084	6,013	66,071
2017	290,027	311,238	- 21,212	8,585	5,546	+ 3,039	60,645	61,480	- 835	35,282	78,839	7,239	71,601
2018	308,653	322,664	- 14,010	9,898	5,640	+ 4,257	65,621	64,868	+ 754	36,391	80,934	6,635	74,299
2019	327,246	341,689	- 14,443	10,634	4,994	+ 5,640	70,141	66,502	+ 3,638	37,344	83,292	7,036	76,256
2020	292,006	285,373	+ 6,633	9,985	4,787	+ 5,198	56,677	62,069	- 5,392	19,351	34,029	3,120	30,909
2021	348,863	345,030	+ 3,833	12,184	5,711	+ 6,474	79,540	85,506	- 5,966	18,827	43,150	3,494	39,656
2022	419,691	451,726	- 32,035	14,745	6,960	+ 7,785	107,595	118,077	- 10,481	30,258	85,204	6,498	78,706
2023	418,631	482,069	- 63,437	14,478	7,123	+ 7,355	88,461	98,957	- 10,495	34,993	106,767	9,076	97,691
2024	435,907	509,930	- 74,023	13,677	7,263	+ 6,414	90,979	101,828	- 10,849	37,055	111,115	10,741	100,374
2022 Q2	100,733	106,395	- 5,662	3,446	1,733	+ 1,713	27,687	28,192	- 505	7,641	20,679	1,357	19,322
Q3	105,179	126,956	- 21,778	3,654	1,771	+ 1,883	29,473	32,966	- 3,493	9,896	32,402	1,696	30,706
Q4	116,675	122,554	- 5,879	3,804	1,828	+ 1,977	26,969	29,347	- 2,378	8,008	21,331	2,493	18,838
2023 Q1	99,779	109,159	- 9,381	4,119	1,763	+ 2,356	23,059	26,083	- 3,025	6,801	18,136	1,468	16,668
Q2	100,029	117,561	- 17,533	3,277	1,720	+ 1,558	22,631	24,518	- 1,887	9,226	27,341	2,042	25,298
Q3	101,319	125,698	- 24,379	3,408	1,732	+ 1,676	21,413	23,975	- 2,562	10,518	35,821	2,355	33,467
Q4	117,505	129,650	- 12,145	3,675	1,909	+ 1,765	21,359	24,381	- 3,022	8,448	25,469	3,211	22,257
2024 Q1	102,155	111,801	- 9,646	3,544	1,819	+ 1,725	21,822	23,747	- 1,925	7,115	18,155	3,474	14,680
Q2	106,076	125,583	- 19,506	3,298	1,904	+ 1,394	23,436	25,519	- 2,083	9,820	29,230	3,766	25,463
Q3	107,934	134,894	- 26,960	3,314	1,742	+ 1,572	23,567	26,194	- 2,628	11,248	37,202	1,021	36,181
Q4	119,742	137,652	- 17,910	3,520	1,798	+ 1,723	22,154	26,368	- 4,213	8,872	26,528	2,479	24,049
2025 Q1	104,038	117,089	- 13,050	3,255	1,536	+ 1,719	21,471	24,635	- 3,164	7,127	18,940	1,707	17,233
2022 Oct.	35,177	40,805	- 5,628	1,301	534	+ 767	9,034	9,705	- 671	3,010	10,685	867	9,818
Nov.	35,790	37,657	- 1,867	1,280	578	+ 702	9,471	10,193	- 722	2,425	5,866	933	4,933
Dec.	45,708	44,092	+ 1,616	1,224	716	+ 508	8,464	9,449	- 985	2,574	4,780	693	4,087
2023 Jan.	33,445	35,674	- 2,230	1,504	568	+ 936	7,989	8,772	- 783	2,102	5,159	335	4,824
Feb.	31,442	34,493	- 3,052	1,276	557	+ 718	7,218	8,416	- 1,198	2,280	5,869	571	5,298
Mar.	34,893	38,992	- 4,099	1,339	637	+ 701	7,851	8,895	- 1,043	2,419	7,108	561	6,547
Apr.	31,763	35,955	- 4,192	1,106	570	+ 536	7,338	7,883	- 545	2,914	7,124	664	6,460
May	32,760	38,988	- 6,228	1,037	553	+ 484	7,551	8,247	- 696	3,162	9,038	618	8,420
June	35,506	42,618	- 7,113	1,134	597	+ 538	7,742	8,388	- 645	3,150	11,179	760	10,418
July	33,528	41,394	- 7,866	1,098	614	+ 484	7,210	7,754	- 544	3,785	10,656	696	9,960
Aug.	32,172	42,650	- 10,479	923	568	+ 354	7,191	8,244	- 1,052	3,544	13,075	769	12,305
Sep.	35,619	41,653	- 6,035	1,387	549	+ 838	7,012	7,977	- 965	3,189	12,091	890	11,201
Oct.	35,167	46,127	- 10,961	1,177	612	+ 565	7,229	8,466	- 1,238	3,053	13,955	1,328	12,627
Nov.	35,906	39,129	- 3,224	1,187	629	+ 558	7,144	7,967	- 822	2,654	7,264	1,141	6,123
Dec.	46,433	44,394	+ 2,039	1,311	669	+ 642	6,985	7,947	- 962	2,741	4,249	742	3,507
2024 Jan.	33,880	38,207	- 4,326	1,251	633	+ 618	7,538	7,996	- 458	2,243	6,082	1,293	4,789
Feb.	32,958	34,963	- 2,005	1,129	579	+ 551	7,124	7,583	- 459	2,349	5,034	904	4,130
Mar.	35,316	38,631	- 3,315	1,163	607	+ 556	7,160	8,168	- 1,008	2,522	7,038	1,277	5,761
Apr.	35,192	41,497	- 6,304	1,144	667	+ 476	7,877	8,348	- 471	2,992	9,339	1,485	7,853
May	34,129	41,379	- 7,251	1,045	613	+ 433	7,836	8,746	- 910	3,233	9,534	913	8,621
June	36,756	42,707	- 5,951	1,109	624	+ 485	7,723	8,425	- 701	3,594	10,357	1,368	8,990
July	37,159	46,646	- 9,487	1,154	654	+ 500	8,248	8,934	- 686	4,068	11,428	351	11,077
Aug.	34,234	44,581	- 10,347	1,012	545	+ 467	7,914	8,724	- 810	3,813	13,569	291	13,278
Sep.	36,540	43,667	- 7,126	1,149	543	+ 605	7,405	8,536	- 1,131	3,367	12,206	379	11,827
Oct.	36,521	47,590	- 11,069	1,149	601	+ 548	7,521	8,892	- 1,371	3,182	14,096	644	13,452
Nov.	36,334	42,645	- 6,311	1,224	592	+ 633	7,533	8,913	- 1,380	2,757	7,449	1,077	6,372
Dec.	46,886	47,417	- 530	1,147	606	+ 541	7,100	8,563	- 1,462	2,933	4,983	758	4,226
2025 Jan.	34,878	40,920	- 6,042	1,048	528	+ 521	7,595	8,604	- 1,009	2,235	6,098	390	5,708
Feb.	33,251	37,275	- 4,024	1,045	484	+ 562	6,802	7,964	- 1,163	2,319	5,597	592	5,005
Mar.	35,908	38,893	- 2,985	1,162	525	+ 637	7,074	8,066	- 993	2,573	7,244	725	6,520

1 Incl. freight and insurance costs of foreign trade, see "Explanatory notes and lists".

2 The sub-items of services do not add up to the aggregate because – due to methodological reasons – the construction item reports only the net receipts of domestic companies for construction services abroad and net expenditure to foreign com-

panies for construction services in the reporting country. 3 Incl. fees for processing goods that are not owned by the processor. 4 For a breakdown of transport services and comments, see table II. 3b). 5 Since 2001, the sample results of a household survey have been for expenditure. For further comments on foreign travel, see tables II 6c) and

II. Current account

3. Services

a) Overview

€ million

Insurance and pension services ⁶			Financial services					Charges for the use of intellectual property						
Balance	Receipts	Ex- penditure	Balance	Receipts	of which: Financial inter- mediation services indirectly measured ⁷	Ex- penditure	of which: Financial inter- mediation services indirectly measured ⁷	Balance	Receipts	of which: From out- comes of research and devel- opment ^{8,9}	Ex- penditure	of which: From out- comes of research and devel- opment ⁸	Balance	Period
14	15	16	17	18	19	20	21	22	23	24	25	26	27	
- 32,775	5,565	2,482	+ 3,082	19,022	9,313	9,135	3,731	+ 9,887	6,226	-	5,355	-	+ 871	2010
- 33,755	5,405	2,542	+ 2,862	19,688	8,718	11,435	4,554	+ 8,253	7,715	-	5,326	-	+ 2,389	2011
- 35,422	8,303	3,116	+ 5,187	20,395	8,584	11,181	4,888	+ 9,213	8,005	-	4,974	-	+ 3,030	2012
- 37,713	6,490	3,198	+ 3,291	20,461	8,544	12,452	5,246	+ 8,010	13,182	6,867	6,517	2,948	+ 6,665	2013
- 37,653	8,012	4,369	+ 3,643	20,023	8,556	13,345	5,856	+ 6,678	17,734	6,994	8,092	3,190	+ 9,643	2014
- 36,595	10,071	5,521	+ 4,550	21,141	8,544	12,595	5,651	+ 8,547	21,733	8,696	9,132	3,330	+ 12,602	2015
- 38,247	11,891	6,151	+ 5,740	20,710	7,906	12,115	5,074	+ 8,595	26,016	10,778	10,226	4,073	+ 15,790	2016
- 43,558	10,529	5,923	+ 4,606	21,057	7,872	11,554	4,243	+ 9,503	27,624	11,005	12,721	4,941	+ 14,903	2017
- 44,543	11,214	7,088	+ 4,126	21,381	7,580	11,913	4,465	+ 9,468	31,074	12,298	13,855	3,857	+ 17,219	2018
- 45,947	11,584	7,054	+ 4,530	23,817	8,131	13,622	4,642	+ 10,195	33,522	12,580	15,155	3,820	+ 18,368	2019
- 14,678	12,289	7,366	+ 4,924	25,805	7,951	16,109	4,624	+ 9,696	33,247	11,955	15,098	3,282	+ 18,149	2020
- 24,323	13,553	8,433	+ 5,121	30,532	8,033	21,884	4,341	+ 8,648	50,591	29,251	18,442	5,809	+ 32,149	2021
- 54,946	16,475	10,134	+ 6,340	32,645	9,398	23,530	5,105	+ 9,115	50,208	25,371	20,271	5,410	+ 29,937	2022
- 71,774	18,059	10,841	+ 7,218	35,001	12,089	25,589	6,893	+ 9,412	44,513	19,215	22,829	7,155	+ 21,684	2023
- 74,060	20,702	12,284	+ 8,418	37,046	12,834	25,917	7,334	+ 11,129	42,361	16,046	24,535	7,829	+ 17,826	2024
- 13,038	4,180	2,537	+ 1,643	7,693	2,260	5,386	1,217	+ 2,307	11,638	5,703	4,538	1,075	+ 7,100	2022 Q2
- 22,506	4,157	2,596	+ 1,562	8,026	2,341	5,878	1,288	+ 2,148	11,205	5,318	5,386	1,112	+ 5,819	Q3
- 13,323	4,038	2,513	+ 1,525	8,835	2,652	6,207	1,401	+ 2,628	11,829	4,600	5,776	1,812	+ 6,053	Q4
- 11,335	4,500	2,623	+ 1,877	8,533	2,819	6,436	1,513	+ 2,097	11,211	4,610	5,289	1,540	+ 5,922	2023 Q1
- 18,115	4,495	2,707	+ 1,789	8,466	3,047	6,096	1,728	+ 2,371	10,013	3,939	5,321	1,374	+ 4,692	Q2
- 25,304	4,429	2,700	+ 1,729	8,538	3,095	5,838	1,773	+ 2,699	10,615	4,724	5,548	1,220	+ 5,066	Q3
- 17,021	4,634	2,811	+ 1,823	9,464	3,128	7,219	1,879	+ 2,245	12,674	5,941	6,671	3,021	+ 6,003	Q4
- 11,040	4,759	2,834	+ 1,926	9,285	3,151	6,395	1,800	+ 2,890	10,640	3,822	5,721	1,689	+ 4,919	2024 Q1
- 19,410	4,838	2,895	+ 1,943	9,160	3,162	6,270	1,809	+ 2,890	9,952	3,630	5,274	1,200	+ 4,678	Q2
- 25,954	4,799	2,923	+ 1,870	8,918	3,170	6,295	1,798	+ 2,623	10,690	4,278	6,352	1,622	+ 4,338	Q3
- 17,656	6,305	3,632	+ 2,672	9,684	3,351	6,958	1,927	+ 2,726	11,079	4,317	7,188	3,317	+ 3,891	Q4
- 11,813	5,141	3,180	+ 1,961	9,504	3,335	6,710	1,656	+ 2,794	11,050	3,905	5,735	1,330	+ 5,315	2025 Q1
- 7,675	1,333	869	+ 464	2,608	874	1,941	450	+ 667	3,442	1,692	1,404	406	+ 2,037	2022 Oct.
- 3,441	1,338	791	+ 547	2,837	880	1,992	485	+ 845	3,443	1,339	1,710	598	+ 1,733	Nov.
- 2,206	1,368	853	+ 514	3,391	898	2,274	466	+ 1,117	4,944	1,569	2,661	807	+ 2,282	Dec.
- 3,057	1,424	903	+ 521	2,982	914	2,155	465	+ 827	3,882	1,621	1,752	386	+ 2,130	2023 Jan.
- 3,589	1,453	867	+ 586	2,759	941	2,271	528	+ 488	3,333	1,260	1,975	632	+ 1,357	Feb.
- 4,689	1,623	852	+ 771	2,791	964	2,010	520	+ 782	3,997	1,730	1,562	522	+ 2,435	Mar.
- 4,210	1,427	903	+ 524	2,664	996	2,042	538	+ 622	3,816	1,658	1,419	279	+ 2,397	Apr.
- 5,877	1,444	866	+ 578	2,792	1,018	1,960	582	+ 833	3,332	1,254	2,089	717	+ 1,243	May
- 8,029	1,625	939	+ 686	3,010	1,033	2,094	608	+ 916	2,866	1,027	1,813	378	+ 1,053	June
- 6,871	1,420	924	+ 496	2,808	1,041	2,001	586	+ 807	3,316	1,408	2,266	217	+ 1,050	July
- 9,531	1,470	877	+ 593	2,913	1,027	1,963	593	+ 951	2,702	784	1,795	589	+ 907	Aug.
- 8,902	1,540	899	+ 641	2,816	1,027	1,875	594	+ 941	4,597	2,532	1,488	414	+ 3,110	Sep.
- 10,902	1,490	955	+ 535	2,991	1,048	2,644	607	+ 347	4,202	2,268	1,963	752	+ 2,239	Oct.
- 4,611	1,534	948	+ 585	2,898	1,046	2,173	646	+ 725	3,945	1,692	1,782	668	+ 2,162	Nov.
- 1,508	1,610	908	+ 702	3,575	1,034	2,401	626	+ 1,174	4,528	1,982	2,926	1,601	+ 1,602	Dec.
- 3,838	1,510	939	+ 572	3,205	1,013	2,292	584	+ 914	3,551	1,369	2,145	685	+ 1,406	2024 Jan.
- 2,685	1,538	927	+ 611	2,849	1,072	2,049	612	+ 800	3,501	1,073	2,161	739	+ 1,340	Feb.
- 4,516	1,711	968	+ 743	3,231	1,066	2,054	604	+ 1,176	3,589	1,379	1,416	264	+ 2,173	Mar.
- 6,346	1,556	996	+ 560	3,215	1,047	2,246	609	+ 969	3,781	1,434	1,484	292	+ 2,297	Apr.
- 6,301	1,594	915	+ 680	3,019	1,055	1,916	621	+ 1,103	3,163	1,117	2,074	653	+ 1,088	May
- 6,763	1,688	984	+ 703	2,926	1,060	2,108	579	+ 818	3,008	1,079	1,716	255	+ 1,293	June
- 7,360	1,570	1,011	+ 558	3,144	1,042	2,134	579	+ 1,010	3,879	1,812	2,663	484	+ 1,216	July
- 9,756	1,567	894	+ 673	2,884	1,056	2,180	619	+ 705	2,928	941	2,125	697	+ 802	Aug.
- 8,838	1,663	1,017	+ 645	2,890	1,072	1,981	600	+ 909	3,883	1,525	1,563	441	+ 2,320	Sep.
- 10,914	1,558	1,023	+ 536	3,338	1,113	2,355	612	+ 983	3,635	1,491	1,316	338	+ 2,319	Oct.
- 4,692	1,557	923	+ 634	3,001	1,131	2,113	662	+ 888	3,379	1,296	2,169	747	+ 1,210	Nov.
- 2,050	3,189	1,687	+ 1,502	3,345	1,107	2,491	653	+ 854	4,064	1,531	3,702	2,233	+ 362	Dec.
- 3,863	1,661	1,073	+ 588	3,422	1,066	2,569	524	+ 853	3,706	1,430	1,812	272	+ 1,894	2025 Jan.
- 3,278	1,665	979	+ 686	3,063	1,147	2,166	570	+ 897	3,544	1,111	2,469	723	+ 1,076	Feb.
- 4,671	1,815	1,127	+ 687	3,019	1,122	1,975	562	+ 1,044	3,800	1,364	1,454	334	+ 2,346	Mar.

II. 6d). ⁶ Service components included in premium payments. Net premiums and insurance benefits are recorded under secondary income and – in the case of life insurance – in the financial account. Since 2014, incl. insurance commission. ⁷ For more detailed information on financial intermediation services indirectly measured (FISIM), see "Explana-

tory notes and lists". ⁸ Industrial and other property rights. No distinction between usage and sale of intellectual property before 2013. ⁹ Since the reporting year 2021 estimated to a large extent.

II. Current account

3. Services a) Overview

€ million

Period	Maintenance and repair services			Construction 2			Telecommunications, computer and information services				Other business services		
	Receipts	Ex- penditure 1	Balance	Con- struction abroad (balance)	Con- struction in the reporting country (balance)	Balance	Receipts	of which: Computer services	Expenditure	of which: Computer services	Balance	Receipts	
												Total	Research and devel- opment services
	28	29	30	31	32	33	34	35	36	37	38	39	40
2010	2,378	3,055	- 676	-	-	-	15,734	13,051	15,063	11,022	+ 670	48,284	11,158
2011	2,117	2,992	- 874	-	-	-	17,006	14,410	16,149	12,217	+ 857	52,198	12,663
2012	2,855	4,122	- 1,267	-	-	-	19,708	16,579	18,266	13,925	+ 1,442	57,094	13,955
2013	4,815	6,429	- 1,614	-	-	-	17,180	13,825	21,340	16,510	- 4,160	59,992	16,815
2014	5,783	6,510	- 727	+ 587	- 478	+ 109	16,150	12,599	20,394	15,622	- 4,244	68,507	19,159
2015	7,065	7,597	- 532	+ 467	- 498	- 31	20,457	16,494	24,377	19,185	- 3,920	73,915	21,226
2016	7,909	8,630	- 721	+ 390	- 578	- 189	23,121	18,878	30,276	24,822	- 7,156	76,831	22,392
2017	8,887	9,471	- 584	+ 531	- 536	- 5	26,006	20,592	34,194	27,872	- 8,188	81,952	23,577
2018	10,262	9,860	+ 402	+ 589	- 520	+ 69	28,500	22,382	35,560	29,356	- 7,060	85,433	23,608
2019	12,031	11,284	+ 747	+ 761	- 644	+ 117	29,893	23,572	39,656	33,239	- 9,763	88,914	24,088
2020	10,662	10,295	+ 367	+ 786	- 652	+ 134	31,302	25,274	39,243	32,867	- 7,941	83,564	22,812
2021	10,263	10,539	- 276	+ 624	- 832	- 208	36,161	29,245	45,515	37,957	- 9,354	87,228	22,013
2022	11,832	12,578	- 746	+ 450	- 866	- 416	41,262	33,774	52,335	43,679	- 11,073	103,048	26,050
2023	13,797	14,768	- 971	+ 430	- 1,223	- 793	46,151	37,642	57,112	48,103	- 10,961	111,534	26,096
2024	14,331	15,831	- 1,501	+ 671	- 1,423	- 752	49,899	40,774	60,429	50,932	- 10,529	117,888	27,669
2022 Q2	2,880	2,950	- 70	+ 96	- 196	- 100	9,631	7,826	11,919	9,889	- 2,288	23,160	5,429
Q3	2,994	3,207	- 213	+ 67	- 200	- 133	9,448	7,655	13,018	10,958	- 3,570	23,477	5,571
Q4	3,291	3,562	- 271	+ 159	- 293	- 134	13,460	11,113	14,865	12,317	- 1,406	33,064	9,671
2023 Q1	3,125	3,389	- 265	+ 102	- 190	- 88	9,782	7,983	13,717	11,536	- 3,935	25,912	5,593
Q2	3,389	3,568	- 179	+ 19	- 256	- 237	11,028	8,878	13,649	11,419	- 2,620	24,882	5,020
Q3	3,726	3,614	+ 112	+ 110	- 284	- 174	10,124	8,301	13,644	11,491	- 3,521	25,740	5,571
Q4	3,557	4,197	- 640	+ 199	- 493	- 294	15,217	12,481	16,102	13,656	- 885	34,999	9,913
2024 Q1	3,462	3,713	- 251	+ 50	- 349	- 299	11,113	9,182	14,662	12,322	- 3,548	27,756	5,813
Q2	3,482	3,844	- 362	+ 135	- 293	- 158	11,947	9,668	14,222	11,993	- 2,275	27,249	5,347
Q3	3,486	4,008	- 522	+ 233	- 355	- 122	11,416	9,090	14,660	12,235	- 3,244	27,455	5,872
Q4	3,901	4,266	- 365	+ 253	- 426	- 173	15,423	12,834	16,885	14,383	- 1,462	35,429	10,637
2025 Q1	3,851	4,366	- 515	+ 17	- 224	- 208	12,146	9,824	15,566	13,106	- 3,420	27,772	6,011
2022 Oct.	976	1,085	- 109	+ 23	- 90	- 68	2,948	2,376	4,217	3,498	- 1,270	9,591	3,221
Nov.	1,111	1,177	- 67	+ 46	- 99	- 52	3,807	3,187	4,254	3,431	- 447	8,952	2,171
Dec.	1,204	1,300	- 96	+ 90	- 104	- 14	6,705	5,550	6,394	5,388	+ 311	14,521	4,278
2023 Jan.	966	1,073	- 107	+ 55	- 51	+ 4	3,024	2,380	4,618	3,845	- 1,594	8,645	1,847
Feb.	986	1,000	- 14	+ 17	- 63	- 46	3,328	2,750	4,293	3,543	- 965	7,967	1,730
Mar.	1,172	1,316	- 144	+ 30	- 76	- 46	3,430	2,853	4,805	4,149	- 1,376	9,300	2,016
Apr.	942	1,119	- 176	+ 42	- 67	- 25	3,002	2,418	4,712	4,000	- 1,710	7,729	1,618
May	1,131	1,132	- 1	- 5	- 114	- 119	3,319	2,745	4,424	3,724	- 1,104	8,090	1,682
June	1,316	1,317	- 1	- 17	- 76	- 93	4,707	3,714	4,513	3,695	+ 194	9,064	1,720
July	1,172	1,185	- 13	+ 15	- 81	- 65	3,408	2,810	5,094	4,384	- 1,686	8,429	1,842
Aug.	1,231	1,155	+ 76	+ 53	- 110	- 57	3,239	2,730	4,359	3,632	- 1,119	8,028	1,431
Sep.	1,323	1,275	+ 48	+ 42	- 93	- 52	3,477	2,761	4,192	3,475	- 715	9,284	2,298
Oct.	1,136	1,299	- 163	+ 90	- 133	- 43	3,415	2,791	4,818	4,072	- 1,403	9,516	2,963
Nov.	1,161	1,320	- 159	+ 4	- 153	- 150	4,190	3,442	4,627	3,894	- 436	9,858	2,429
Dec.	1,260	1,578	- 318	+ 105	- 207	- 102	7,612	6,248	6,658	5,690	+ 954	15,625	4,521
2024 Jan.	1,244	1,272	- 28	+ 12	- 58	- 46	3,467	2,836	5,222	4,353	- 1,756	8,947	1,707
Feb.	1,036	1,200	- 163	+ 39	- 158	- 119	3,603	3,017	4,779	4,024	- 1,176	8,941	1,906
Mar.	1,181	1,242	- 60	- 0	- 133	- 133	4,044	3,329	4,661	3,945	- 617	9,867	2,201
Apr.	1,162	1,267	- 104	+ 65	- 98	- 33	3,564	2,915	5,368	4,588	- 1,804	8,930	1,710
May	1,172	1,226	- 54	+ 29	- 105	- 75	3,421	2,754	4,472	3,707	- 1,051	8,716	1,818
June	1,148	1,351	- 204	+ 41	- 91	- 50	4,962	4,000	4,383	3,698	+ 579	9,602	1,819
July	1,204	1,422	- 218	+ 52	- 148	- 96	3,718	3,016	5,793	4,906	- 2,075	9,179	1,856
Aug.	1,126	1,210	- 85	+ 54	- 105	- 51	3,527	2,889	4,381	3,606	- 853	8,551	1,798
Sep.	1,156	1,376	- 220	+ 127	- 102	+ 25	4,171	3,185	4,486	3,723	- 315	9,726	2,218
Oct.	1,284	1,299	- 15	+ 88	- 146	- 57	3,816	3,085	5,326	4,517	- 1,509	9,981	2,614
Nov.	1,206	1,419	- 213	+ 59	- 148	- 88	3,816	3,158	4,854	4,019	- 1,038	10,691	2,836
Dec.	1,412	1,549	- 137	+ 106	- 133	- 27	7,791	6,591	6,705	5,847	+ 1,085	14,757	5,187
2025 Jan.	1,233	1,592	- 359	- 24	- 87	- 110	3,856	3,143	5,558	4,694	- 1,702	9,283	2,048
Feb.	1,307	1,388	- 81	+ 11	- 62	- 50	3,438	2,794	4,925	4,133	- 1,487	9,173	2,018
Mar.	1,311	1,386	- 75	+ 29	- 76	- 47	4,852	3,887	5,083	4,279	- 231	9,316	1,945

1 Until 2012, only goods exported for repairs. 2 Since 2014, construction sites that exist for less than one year are recorded as services. New investment and disinvestment

in construction sites that exist for more than one year are recorded as direct investment (see table IV. 1b)), while the corresponding profits are recorded as primary income (see

II. Current account

3. Services

a) Overview

€ million

Expenditure						Balance	Personal, cultural, and recreational services			Government goods and services ³			Period
Profes- sional and management consulting services	Technical, trade-related and other business services	Total	Research and development services	Profes- sional and management consulting services	Technical, trade-related and other business services		Receipts	Expenditure	Balance	Receipts	Expenditure	Balance	
41	42	43	44	45	46	47	48	49	50	51	52	53	
16,674	20,453	50,867	7,430	21,939	21,499	- 2,583	850	2,100	- 1,250	3,949	890	+ 3,060	2010
18,436	21,099	57,578	7,963	24,326	25,289	- 5,380	795	2,045	- 1,249	3,986	847	+ 3,139	2011
20,843	22,296	65,087	9,375	27,960	27,751	- 7,993	801	1,973	- 1,172	4,130	845	+ 3,286	2012
22,567	20,610	64,256	11,617	27,823	24,816	- 4,264	1,333	2,093	- 761	4,273	1,046	+ 3,227	2013
24,155	25,193	67,629	13,586	26,791	27,252	+ 878	1,279	3,392	- 2,113	4,158	1,038	+ 3,119	2014
24,702	27,988	74,829	15,904	28,619	30,307	- 914	1,580	4,297	- 2,717	.	.	+ 3,262	2015
25,627	28,812	78,063	19,716	28,398	29,949	- 1,232	1,673	4,540	- 2,867	4,402	1,268	+ 3,134	2016
27,699	30,676	82,664	20,580	30,046	32,038	- 712	3,675	5,268	- 1,592	3,742	1,530	+ 2,212	2017
29,096	32,728	84,350	20,781	30,546	33,023	+ 1,083	2,268	4,947	- 2,680	4,423	1,529	+ 2,894	2018
30,622	34,203	91,564	22,105	34,177	35,282	- 2,650	2,440	4,884	- 2,444	4,597	1,470	+ 3,127	2019
29,104	31,648	88,047	21,466	34,173	32,408	- 4,483	2,639	4,901	- 2,261	4,341	1,422	+ 2,919	2020
31,091	34,124	96,785	23,235	38,294	35,255	- 9,557	2,982	5,151	- 2,168	4,775	1,480	+ 3,295	2021
35,944	41,055	112,477	25,659	43,745	43,073	- 9,429	3,515	5,501	- 1,986	5,546	1,681	+ 3,865	2022
38,829	46,609	127,210	31,066	48,254	47,890	- 15,676	4,150	5,988	- 1,838	5,220	1,819	+ 3,402	2023
40,301	49,918	139,013	33,391	52,759	52,863	- 21,125	3,990	6,476	- 2,486	5,391	1,898	+ 3,493	2024
8,147	9,584	25,993	5,493	10,129	10,371	- 2,833	783	1,377	- 594	1,386	382	+ 1,004	2022 Q2
8,397	9,509	27,219	6,263	10,636	10,320	- 3,743	812	1,387	- 575	1,377	333	+ 1,045	Q3
10,791	12,602	34,211	8,880	12,434	12,897	- 1,147	1,194	1,412	- 218	1,483	668	+ 815	Q4
9,217	11,103	29,288	6,823	11,536	10,929	- 3,376	853	1,498	- 645	1,349	314	+ 1,035	2023 Q1
8,848	11,015	30,026	7,123	11,087	11,816	- 5,144	857	1,503	- 645	1,290	406	+ 884	Q2
9,280	10,890	30,129	7,197	11,607	11,325	- 4,388	933	1,461	- 528	1,294	480	+ 814	Q3
11,485	13,601	37,767	9,923	14,024	13,820	- 2,769	1,507	1,527	- 20	1,287	619	+ 668	Q4
9,868	12,074	32,110	6,940	12,707	12,462	- 4,354	925	1,589	- 664	1,276	300	+ 976	2024 Q1
9,705	12,197	33,461	8,044	12,730	12,687	- 6,213	1,023	1,682	- 659	1,254	505	+ 748	Q2
9,862	11,722	32,651	7,269	12,975	12,408	- 5,196	1,034	1,607	- 573	1,277	410	+ 868	Q3
10,866	13,925	40,791	11,138	14,347	15,306	- 5,362	1,007	1,598	- 591	1,584	683	+ 901	Q4
10,014	11,748	33,754	6,771	13,677	13,307	- 5,982	930	1,590	- 661	1,287	364	+ 922	2025 Q1
2,911	3,459	9,529	2,351	3,472	3,706	+ 63	261	446	- 185	483	132	+ 352	2022 Oct.
3,205	3,576	10,194	2,311	3,960	3,923	- 1,242	402	469	- 67	502	157	+ 345	Nov.
4,675	5,567	14,488	4,217	5,002	5,268	+ 33	530	497	+ 34	497	379	+ 118	Dec.
2,986	3,812	9,906	2,009	4,154	3,742	- 1,261	270	491	- 221	464	88	+ 376	2023 Jan.
3,069	3,168	8,458	1,893	3,377	3,188	- 491	253	501	- 248	450	100	+ 350	Feb.
3,162	4,122	10,924	2,921	4,005	3,999	- 1,624	330	506	- 176	435	126	+ 309	Mar.
2,783	3,328	9,461	2,299	3,453	3,708	- 1,732	233	437	- 204	433	102	+ 332	Apr.
2,900	3,508	9,716	2,082	3,656	3,978	- 1,627	329	490	- 160	424	206	+ 218	May
3,165	4,179	10,849	2,742	3,978	4,129	- 1,785	295	576	- 281	432	98	+ 334	June
3,013	3,573	9,985	2,485	3,790	3,709	- 1,556	277	447	- 170	419	217	+ 202	July
3,093	3,504	9,718	2,263	3,814	3,642	- 1,690	290	501	- 212	444	141	+ 303	Aug.
3,173	3,813	10,426	2,448	4,003	3,975	- 1,142	366	513	- 146	431	121	+ 309	Sep.
2,979	3,574	10,559	2,629	4,124	3,806	- 1,043	278	463	- 185	444	114	+ 330	Oct.
3,318	4,111	11,367	2,840	4,060	4,468	- 1,509	750	490	+ 260	410	238	+ 172	Nov.
5,189	5,916	15,841	4,454	5,841	5,546	- 216	479	574	- 95	433	267	+ 166	Dec.
3,307	3,934	10,834	2,132	4,421	4,281	- 1,887	327	506	- 179	447	91	+ 356	2024 Jan.
3,061	3,974	9,711	2,079	3,869	3,763	- 769	301	539	- 237	412	110	+ 301	Feb.
3,500	4,166	11,565	2,729	4,418	4,418	- 1,698	297	545	- 248	417	99	+ 319	Mar.
3,179	4,041	10,924	2,580	4,201	4,143	- 1,994	297	473	- 176	431	108	+ 323	Apr.
3,129	3,769	10,764	2,362	4,129	4,273	- 2,048	350	595	- 245	397	270	+ 128	May
3,396	4,387	11,774	3,101	4,401	4,271	- 2,171	376	613	- 238	425	127	+ 298	June
3,364	3,958	11,570	2,741	4,549	4,281	- 2,392	346	569	- 223	431	153	+ 278	July
3,010	3,744	10,058	2,090	4,025	3,942	- 1,507	281	504	- 222	412	121	+ 291	Aug.
3,488	4,020	11,023	2,437	4,401	4,185	- 1,298	406	534	- 127	434	136	+ 298	Sep.
3,236	4,131	11,710	2,561	4,551	4,598	- 1,729	323	511	- 189	479	150	+ 329	Oct.
3,280	4,576	13,214	3,970	4,369	4,875	- 2,523	313	514	- 201	618	160	+ 458	Nov.
4,351	5,219	15,867	4,607	5,426	5,833	- 1,110	371	573	- 202	487	373	+ 114	Dec.
3,565	3,670	12,223	2,242	5,136	4,845	- 2,940	267	498	- 231	438	122	+ 316	2025 Jan.
3,112	4,044	10,414	2,017	4,297	4,101	- 1,241	303	553	- 251	418	111	+ 307	Feb.
3,337	4,034	11,117	2,512	4,243	4,361	- 1,801	360	539	- 179	430	131	+ 299	Mar.

table II. 4b)). Up to and incl. 2013, construction sites were not classified according to how long they had existed and were all recorded under direct investment. ³ Public

authorities' receipts from and expenditure on services, if not included elsewhere; incl. receipts from foreign military bases.

II. Current account

3. Services

b) Transport

€ million

Period	Transport 1									
	Receipts	Ex- penditure	Balance	Sea transport				Air transport		
				Receipts		Expenditure		Balance	Receipts	
				Total	of which: Freight	Total	of which: Freight		Total	of which: Freight
1	2	3	4	5	6	7	8	9	10	
2010	45,310	52,028	- 6,718	22,697	20,704	15,911	5,645	+ 6,787	13,277	.
2011	46,734	53,954	- 7,220	23,266	21,054	16,459	5,327	+ 6,807	12,766	.
2012	49,065	57,303	- 8,238	23,756	21,494	18,477	6,247	+ 5,279	13,105	.
2013	51,006	58,354	- 7,347	23,220	20,647	18,135	6,335	+ 5,085	13,866	.
2014	51,548	56,167	- 4,619	22,087	19,958	16,584	7,260	+ 5,503	14,737	998
2015	56,064	59,023	- 2,959	25,290	23,278	16,816	6,752	+ 8,475	15,855	.
2016	55,282	58,616	- 3,335	22,792	20,733	16,381	6,696	+ 6,411	16,822	.
2017	60,645	61,480	- 835	25,128	23,067	16,449	6,751	+ 8,680	18,517	1,968
2018	65,621	64,868	+ 754	28,015	25,918	16,816	6,758	+ 11,199	18,939	2,360
2019	70,141	66,502	+ 3,638	29,061	26,858	16,900	6,688	+ 12,161	19,950	2,056
2020	56,677	62,069	- 5,392	25,140	22,949	14,687	6,789	+ 10,454	7,254	3,046
2021	79,540	85,506	- 5,966	39,911	37,332	25,068	15,883	+ 14,843	10,620	4,416
2022	107,595	118,077	- 10,481	50,904	47,750	28,925	18,896	+ 21,979	21,170	5,576
2023	88,461	98,957	- 10,495	30,786	27,732	18,172	9,322	+ 12,614	23,089	4,395
2024	90,979	101,828	- 10,849	31,910	28,814	18,389	10,196	+ 13,521	23,763	4,492
2022 Q2	27,687	28,192	- 505	13,158	12,410	7,490	4,950	+ 5,668	5,946	1,438
Q3	29,473	32,966	- 3,493	14,394	13,570	7,413	4,681	+ 6,981	6,094	1,440
Q4	26,969	29,347	- 2,378	11,736	10,896	6,446	3,936	+ 5,290	5,312	1,384
2023 Q1	23,059	26,083	- 3,025	8,994	8,131	5,456	3,128	+ 3,538	5,280	1,156
Q2	22,631	24,518	- 1,887	7,838	7,075	4,574	2,443	+ 3,264	6,131	1,072
Q3	21,413	23,975	- 2,562	7,020	6,267	4,045	1,878	+ 2,975	6,170	1,001
Q4	21,359	24,381	- 3,022	6,935	6,260	4,098	1,873	+ 2,837	5,507	1,166
2024 Q1	21,822	23,747	- 1,925	7,407	6,647	4,087	2,117	+ 3,320	5,483	1,020
Q2	23,436	25,519	- 2,083	7,766	7,015	4,559	2,524	+ 3,207	6,461	1,142
Q3	23,567	26,194	- 2,628	8,487	7,712	5,022	2,926	+ 3,465	6,266	1,095
Q4	22,154	26,368	- 4,213	8,250	7,440	4,721	2,628	+ 3,529	5,553	1,235
2025 Q1	21,471	24,635	- 3,164	7,756	6,917	4,411	2,277	+ 3,345	5,728	964
2022 Oct.	9,034	9,705	- 671	3,947	3,676	2,228	1,383	+ 1,719	2,007	470
Nov.	9,471	10,193	- 722	4,149	3,858	2,204	1,351	+ 1,945	1,705	445
Dec.	8,464	9,449	- 985	3,640	3,362	2,014	1,202	+ 1,626	1,600	469
2023 Jan.	7,989	8,772	- 783	3,270	2,989	1,866	1,142	+ 1,404	1,644	377
Feb.	7,218	8,416	- 1,198	2,729	2,415	1,773	1,000	+ 956	1,696	375
Mar.	7,851	8,895	- 1,043	2,995	2,726	1,817	986	+ 1,178	1,941	404
Apr.	7,338	7,883	- 545	2,422	2,194	1,546	886	+ 876	1,883	360
May	7,551	8,247	- 696	2,754	2,488	1,553	821	+ 1,201	2,078	341
June	7,742	8,388	- 645	2,662	2,392	1,475	736	+ 1,187	2,170	371
July	7,210	7,754	- 544	2,379	2,131	1,328	615	+ 1,051	2,033	327
Aug.	7,191	8,244	- 1,052	2,408	2,147	1,384	641	+ 1,023	2,022	327
Sep.	7,012	7,977	- 965	2,233	1,989	1,332	623	+ 901	2,116	347
Oct.	7,229	8,466	- 1,238	2,387	2,147	1,422	634	+ 965	2,000	335
Nov.	7,144	7,967	- 822	2,337	2,103	1,376	617	+ 961	1,837	400
Dec.	6,985	7,947	- 962	2,211	2,010	1,300	622	+ 911	1,670	432
2024 Jan.	7,538	7,996	- 458	2,537	2,256	1,276	625	+ 1,262	1,766	320
Feb.	7,124	7,583	- 459	2,393	2,158	1,360	697	+ 1,032	1,850	331
Mar.	7,160	8,168	- 1,008	2,477	2,233	1,451	795	+ 1,027	1,868	370
Apr.	7,877	8,348	- 471	2,631	2,365	1,506	819	+ 1,125	2,144	368
May	7,836	8,746	- 910	2,662	2,415	1,490	804	+ 1,172	2,161	380
June	7,723	8,425	- 701	2,473	2,235	1,563	901	+ 910	2,156	395
July	8,248	8,934	- 686	2,942	2,666	1,751	1,051	+ 1,190	2,163	352
Aug.	7,914	8,724	- 810	2,819	2,561	1,690	967	+ 1,129	2,049	387
Sep.	7,405	8,536	- 1,131	2,727	2,485	1,581	908	+ 1,146	2,054	357
Oct.	7,521	8,892	- 1,371	2,826	2,567	1,587	900	+ 1,239	1,977	354
Nov.	7,533	8,913	- 1,380	2,664	2,415	1,575	852	+ 1,089	1,931	424
Dec.	7,100	8,563	- 1,462	2,760	2,459	1,560	876	+ 1,200	1,645	456
2025 Jan.	7,595	8,604	- 1,009	2,847	2,571	1,583	850	+ 1,264	1,843	320
Feb.	6,802	7,964	- 1,163	2,434	2,170	1,381	708	+ 1,053	1,863	314
Mar.	7,074	8,066	- 993	2,476	2,176	1,447	718	+ 1,029	2,023	330

1 Includes freight and insurance costs of foreign trade. 2 These comprise in particular: inland waterway, road, rail, space and pipeline space transport.

II. Current account

3. Services
b) Transport

€ million

Expenditure		Postal and courier services				Other modes of transport 2					Period
Total	of which: Freight	Balance	Receipts	Expenditure	Balance	Receipts		Expenditure		Balance	
						Total	of which: Freight	Total	of which: Freight		
11	12	13	14	15	16	17	18	19	20	21	
16,527	.	- 3,251	4,640	3,242	+ 1,398	4,696	2,153	16,348	11,133	- 11,652	2010
17,604	.	- 4,838	5,581	4,218	+ 1,364	5,121	2,382	15,673	11,263	- 10,553	2011
18,450	.	- 5,344	6,805	4,866	+ 1,939	5,399	2,405	15,511	11,422	- 10,112	2012
19,433	.	- 5,568	6,989	4,653	+ 2,336	6,932	3,705	16,133	12,146	- 9,201	2013
17,401	7,419	- 2,664	6,095	4,044	+ 2,051	8,628	3,606	18,138	12,899	- 9,509	2014
17,994	.	- 2,139	6,039	4,289	+ 1,751	8,880	3,771	19,925	13,700	- 11,045	2015
17,609	.	- 787	6,281	4,243	+ 2,038	9,387	3,816	20,384	14,215	- 10,997	2016
18,075	7,656	+ 443	6,938	4,413	+ 2,525	10,061	4,183	22,544	14,913	- 12,483	2017
18,171	7,923	+ 767	7,544	5,173	+ 2,372	11,124	4,553	24,708	15,534	- 13,584	2018
17,927	7,708	+ 2,023	8,595	5,783	+ 2,812	12,534	4,598	25,891	15,803	- 13,358	2019
14,075	10,531	- 6,820	11,845	7,978	+ 3,867	12,437	4,853	25,330	15,664	- 12,892	2020
17,617	14,186	- 6,997	14,970	8,488	+ 6,483	14,039	5,636	34,334	20,743	- 20,295	2021
31,240	22,640	- 10,070	17,427	10,274	+ 7,153	18,095	8,766	47,638	33,049	- 29,543	2022
37,658	27,052	- 14,569	17,239	10,140	+ 7,099	17,347	7,419	32,986	20,693	- 15,638	2023
38,691	27,492	- 14,928	16,293	10,282	+ 6,011	19,013	7,455	34,466	20,934	- 15,452	2024
7,473	5,301	- 1,527	4,425	2,581	+ 1,844	4,157	1,804	10,648	6,713	- 6,491	2022 Q2
8,391	5,535	- 2,297	4,431	2,683	+ 1,748	4,553	2,238	14,478	10,761	- 9,925	Q3
8,811	6,423	- 3,500	4,451	2,679	+ 1,773	5,470	2,926	11,411	7,782	- 5,942	Q4
9,014	6,878	- 3,733	4,345	2,467	+ 1,877	4,440	1,989	9,147	5,981	- 4,707	2023 Q1
9,546	6,733	- 3,416	4,395	2,501	+ 1,894	4,267	1,801	7,896	4,950	- 3,629	Q2
9,644	6,661	- 3,473	4,046	2,457	+ 1,589	4,177	1,765	7,830	4,947	- 3,653	Q3
9,454	6,780	- 3,947	4,453	2,715	+ 1,738	4,463	1,864	8,113	4,815	- 3,650	Q4
9,094	6,765	- 3,610	4,340	2,771	+ 1,569	4,592	1,787	7,796	4,684	- 3,204	2024 Q1
9,788	6,809	- 3,327	4,180	2,555	+ 1,625	5,029	1,909	8,617	5,196	- 3,588	Q2
9,876	6,680	- 3,610	3,939	2,540	+ 1,400	4,874	1,965	8,757	5,398	- 3,882	Q3
9,934	7,238	- 4,381	3,833	2,416	+ 1,417	4,518	1,795	9,296	5,656	- 4,778	Q4
9,093	6,729	- 3,364	3,708	2,421	+ 1,287	4,278	1,708	8,710	5,429	- 4,432	2025 Q1
2,846	2,024	- 839	1,424	904	+ 520	1,655	799	3,727	2,516	- 2,071	2022 Oct.
3,105	2,260	- 1,400	1,477	898	+ 579	2,140	1,323	3,986	2,782	- 1,846	Nov.
2,861	2,138	- 1,261	1,550	876	+ 674	1,675	805	3,698	2,483	- 2,024	Dec.
3,004	2,326	- 1,360	1,677	832	+ 845	1,398	571	3,071	1,996	- 1,673	2023 Jan.
2,872	2,219	- 1,176	1,317	802	+ 516	1,476	745	2,970	2,019	- 1,494	Feb.
3,138	2,333	- 1,198	1,350	834	+ 516	1,566	674	3,106	1,967	- 1,540	Mar.
2,936	2,145	- 1,053	1,580	817	+ 764	1,453	640	2,584	1,585	- 1,131	Apr.
3,222	2,311	- 1,143	1,324	797	+ 527	1,394	561	2,676	1,703	- 1,282	May
3,389	2,277	- 1,219	1,491	888	+ 603	1,420	599	2,636	1,662	- 1,216	June
3,037	2,132	- 1,004	1,419	799	+ 620	1,380	574	2,590	1,612	- 1,211	July
3,364	2,296	- 1,343	1,321	803	+ 519	1,441	621	2,692	1,722	- 1,252	Aug.
3,242	2,234	- 1,126	1,306	855	+ 450	1,357	571	2,547	1,613	- 1,190	Sep.
3,358	2,300	- 1,358	1,394	910	+ 485	1,447	617	2,777	1,704	- 1,330	Oct.
3,079	2,169	- 1,242	1,464	900	+ 564	1,506	649	2,611	1,579	- 1,105	Nov.
3,017	2,312	- 1,347	1,594	905	+ 689	1,510	598	2,725	1,532	- 1,215	Dec.
3,034	2,224	- 1,268	1,638	1,016	+ 622	1,597	603	2,670	1,592	- 1,073	2024 Jan.
2,882	2,160	- 1,033	1,390	912	+ 478	1,492	542	2,429	1,487	- 936	Feb.
3,177	2,381	- 1,309	1,312	843	+ 469	1,503	642	2,697	1,606	- 1,195	Mar.
3,129	2,237	- 985	1,392	852	+ 540	1,710	664	2,861	1,698	- 1,151	Apr.
3,475	2,391	- 1,314	1,372	844	+ 528	1,642	608	2,938	1,774	- 1,296	May
3,183	2,181	- 1,028	1,417	860	+ 557	1,678	637	2,819	1,724	- 1,141	June
3,359	2,200	- 1,196	1,371	857	+ 514	1,772	686	2,967	1,834	- 1,195	July
3,225	2,204	- 1,176	1,446	883	+ 563	1,600	635	2,926	1,845	- 1,326	Aug.
3,292	2,277	- 1,238	1,122	800	+ 322	1,502	645	2,864	1,719	- 1,361	Sep.
3,594	2,542	- 1,617	1,198	722	+ 475	1,521	589	2,989	1,778	- 1,468	Oct.
3,417	2,536	- 1,486	1,347	841	+ 506	1,591	661	3,080	1,906	- 1,489	Nov.
2,923	2,159	- 1,278	1,289	853	+ 436	1,407	545	3,228	1,972	- 1,821	Dec.
3,121	2,360	- 1,278	1,427	829	+ 598	1,479	611	3,071	1,916	- 1,592	2025 Jan.
2,922	2,173	- 1,059	1,194	819	+ 375	1,311	479	2,842	1,840	- 1,531	Feb.
3,049	2,195	- 1,026	1,088	773	+ 314	1,487	618	2,797	1,673	- 1,310	Mar.

II. Current account

4. Primary income

a) Overview

€ million

Period	Primary income			Compensation of employees			Investment income						
	Receipts	Expenditure	Balance	Receipts	Expenditure	Balance	Receipts					Interest on debt securities 3	
							Total	Direct investment 1	Portfolio investment			Short-term 4	Long-term 5
									Total	Divi- dends on shares 2	Income from invest- ment fund shares		
1	2	3	4	5	6	7	8	9	10	11	12	13	
2010	201,688	149,342	+ 52,346	10,732	7,490	+ 3,242	185,308	74,796	71,169	5,899	6,269	164	58,837
2011	220,973	150,637	+ 70,336	11,799	7,617	+ 4,183	203,515	84,638	76,074	6,514	6,972	406	62,182
2012	205,301	138,005	+ 67,297	11,964	7,973	+ 3,990	187,783	73,790	74,783	6,493	6,626	234	61,430
2013	191,973	125,103	+ 66,870	12,162	7,858	+ 4,304	174,358	77,926	64,060	7,085	7,531	331	49,114
2014	189,420	127,619	+ 61,801	12,248	8,120	+ 4,128	171,836	75,597	64,972	.	.	330	49,723
2015	191,364	131,324	+ 60,040	13,414	8,941	+ 4,472	173,273	75,562	67,038	.	.	.	49,903
2016	217,152	126,283	+ 90,869	13,796	9,674	+ 4,122	197,779	101,442	65,188	.	.	.	46,470
2017	211,873	128,009	+ 83,864	15,206	10,589	+ 4,617	191,445	94,565	62,678	12,371	8,085	37	42,184
2018	255,717	121,537	+ 134,180	15,811	11,412	+ 4,399	234,374	137,837	60,520	.	.	65	40,344
2019	251,247	121,553	+ 130,094	16,382	11,875	+ 4,507	229,250	135,241	60,858	15,011	6,229	79	39,539
2020	188,818	101,757	+ 87,061	16,462	11,029	+ 5,434	167,351	80,835	56,482	.	.	57	37,278
2021	248,760	125,900	+ 122,860	17,127	11,834	+ 5,294	226,878	132,952	58,014	16,124	6,989	30	34,870
2022	303,136	183,855	+ 119,281	18,597	13,095	+ 5,502	279,806	138,529	63,338	.	.	98	35,132
2023	407,562	270,775	+ 136,787	19,431	13,277	+ 6,153	384,126	148,502	76,217	.	.	725	43,123
2024	430,870	281,874	+ 148,995	19,606	13,503	+ 6,103	406,385	150,975	88,436	23,178	11,549	2,689	51,021
2022 Q2	71,027	58,859	+ 12,168	4,430	3,166	+ 1,263	66,569	34,161	17,527	7,402	1,542	14	8,570
Q3	75,004	42,899	+ 32,105	4,406	3,479	+ 927	70,464	34,102	15,029	.	.	18	8,931
Q4	90,604	49,186	+ 41,418	5,188	3,559	+ 1,629	80,927	35,142	15,713	3,166	3,248	56	9,243
2023 Q1	91,297	58,035	+ 33,261	4,783	2,976	+ 1,808	86,394	35,552	16,598	5,040	1,817	112	9,629
Q2	100,284	85,560	+ 14,724	4,664	3,261	+ 1,403	95,582	36,786	19,867	7,156	1,972	151	10,588
Q3	103,868	62,695	+ 41,173	4,606	3,510	+ 1,096	99,206	38,176	19,312	3,229	4,592	210	11,281
Q4	112,114	64,485	+ 47,629	5,378	3,531	+ 1,846	102,944	37,989	20,440	.	.	251	11,625
2024 Q1	104,320	64,612	+ 39,707	4,888	3,059	+ 1,829	99,064	37,219	20,153	5,533	1,992	670	11,958
Q2	108,209	84,994	+ 23,215	4,678	3,324	+ 1,355	103,330	37,403	23,251	7,781	2,158	760	12,552
Q3	105,335	65,229	+ 40,107	4,650	3,545	+ 1,105	100,660	37,913	21,035	4,239	2,867	789	13,141
Q4	113,006	67,039	+ 45,967	5,390	3,576	+ 1,814	103,331	38,439	23,997	5,625	4,531	470	13,370
2025 Q1	103,444	55,394	+ 48,050	4,919	3,047	+ 1,871	98,471	38,774	21,312	5,338	2,142	225	13,607
2022 Oct.	27,423	15,258	+ 12,165	1,572	1,085	+ 487	24,353	11,605	4,148	749	310	13	3,077
Nov.	29,151	16,465	+ 12,686	1,573	1,088	+ 485	26,082	11,416	4,632	878	748	19	2,988
Dec.	34,030	17,462	+ 16,568	2,044	1,387	+ 657	30,491	12,121	6,932	1,539	2,190	24	3,178
2023 Jan.	29,536	18,354	+ 11,182	1,593	985	+ 608	27,903	11,772	5,360	1,532	580	33	3,216
Feb.	29,865	20,585	+ 9,280	1,595	994	+ 601	28,229	11,715	5,088	1,396	647	38	3,007
Mar.	31,895	19,097	+ 12,799	1,595	996	+ 599	30,262	12,065	6,150	2,111	590	42	3,407
Apr.	32,602	21,645	+ 10,957	1,555	1,085	+ 470	31,034	12,075	6,613	2,306	873	45	3,389
May	33,596	39,436	- 5,840	1,555	1,086	+ 468	32,030	11,980	6,963	2,843	459	49	3,612
June	34,087	24,479	+ 9,608	1,555	1,090	+ 465	32,519	12,731	6,291	2,007	639	57	3,587
July	32,799	21,107	+ 11,692	1,535	1,169	+ 366	31,244	12,494	5,322	959	540	68	3,755
Aug.	36,045	20,634	+ 15,412	1,535	1,173	+ 362	34,493	12,404	8,200	905	3,424	69	3,802
Sep.	35,024	20,954	+ 14,070	1,535	1,168	+ 367	33,470	13,278	5,790	1,365	628	74	3,724
Oct.	35,184	21,123	+ 14,061	1,629	1,078	+ 551	32,292	12,524	5,654	1,036	645	76	3,898
Nov.	36,260	21,268	+ 14,992	1,632	1,087	+ 545	33,365	12,409	6,232	1,363	987	77	3,804
Dec.	40,670	22,094	+ 18,576	2,117	1,367	+ 750	37,287	13,056	8,554	.	.	98	3,923
2024 Jan.	34,212	20,850	+ 13,362	1,629	1,026	+ 603	32,566	12,411	6,401	1,652	598	159	3,992
Feb.	34,195	23,522	+ 10,673	1,629	1,016	+ 613	32,516	12,449	6,154	1,549	567	219	3,820
Mar.	35,913	20,240	+ 15,672	1,630	1,017	+ 613	33,981	12,359	7,597	2,333	828	292	4,146
Apr.	35,736	25,238	+ 10,498	1,560	1,109	+ 450	34,110	12,447	7,836	2,682	821	254	4,079
May	37,003	35,131	+ 1,873	1,559	1,107	+ 452	35,377	12,442	8,451	3,303	641	245	4,262
June	35,469	24,625	+ 10,844	1,559	1,107	+ 452	33,844	12,514	6,964	1,796	696	261	4,210
July	34,447	21,758	+ 12,689	1,545	1,177	+ 368	32,893	12,728	6,316	1,050	618	265	4,383
Aug.	35,542	21,535	+ 14,007	1,552	1,184	+ 368	33,979	12,573	7,429	1,326	1,400	273	4,430
Sep.	35,346	21,935	+ 13,411	1,552	1,183	+ 369	33,788	12,611	7,290	1,863	848	251	4,328
Oct.	34,772	21,419	+ 13,353	1,642	1,096	+ 546	33,119	12,836	7,101	1,520	860	265	4,456
Nov.	35,532	22,498	+ 13,034	1,643	1,101	+ 543	33,864	12,651	8,036	1,867	1,656	124	4,389
Dec.	42,702	23,122	+ 19,580	2,104	1,379	+ 725	36,349	12,952	8,860	2,238	2,014	81	4,526
2025 Jan.	33,548	20,660	+ 12,888	1,640	1,017	+ 623	31,892	11,890	6,942	1,529	738	82	4,592
Feb.	34,347	19,053	+ 15,294	1,640	1,017	+ 623	32,688	13,348	6,676	1,628	707	74	4,266
Mar.	35,549	15,681	+ 19,868	1,639	1,014	+ 626	33,891	13,536	7,694	2,181	696	69	4,748

1 For a breakdown, see table II. 4b). 2 Includes income from participation certificates.
3 Up to and incl. 2012, without accrued interest. 4 Short-term: original maturity of up to one year. 5 Long-term: original maturity of more than one year or unlimited.

6 Includes, inter alia, interest on loans and revenue from insurance and pension services. 7 Includes, inter alia, taxes on leasing, production and imports transferred to the EU as well as subsidies received from the EU.

II. Current account

4. Primary income

a) Overview

€ million

Other investment income 6	Expenditure								Other primary income 7				Period
	Total	Direct investment 1	Portfolio investment				Other investment income 6	Balance	Receipts	Expenditure	Balance		
			Total	Dividends on shares 2	Income from investment fund shares	Interest on debt securities							
						Short-term 4						Long-term 5	
14	15	16	17	18	19	20	21	22	23	24	25	26	
39,343	137,603	43,498	63,457	14,020	1,608	45,318	2,510	30,648	+ 47,705	5,648	4,249	+ 1,399	2010
42,803	138,404	40,073	69,902	19,101	1,822	44,652	4,327	28,429	+ 65,111	5,659	4,616	+ 1,043	2011
39,210	125,532	40,893	63,487	16,512	1,939	42,871	2,166	21,152	+ 62,251	5,555	4,499	+ 1,056	2012
32,371	112,803	35,015	58,308	16,712	1,683	39,265	648	19,480	+ 61,555	5,453	4,442	+ 1,012	2013
31,267	114,970	38,991	58,414	.	.	37,031	572	17,565	+ 56,866	5,337	4,529	+ 808	2014
30,672	115,268	35,170	61,754	.	.	33,748	.	18,344	+ 58,005	4,678	7,115	- 2,437	2015
31,149	109,657	36,653	56,129	.	.	28,032	.	16,875	+ 88,122	5,577	6,952	- 1,375	2016
34,203	110,657	47,631	46,124	21,254	2,564	22,601	- 296	16,902	+ 80,788	5,222	6,763	- 1,541	2017
36,017	103,081	42,963	42,135	.	.	18,768	- 392	17,983	+ 131,292	5,532	7,043	- 1,511	2018
33,151	102,187	43,669	42,137	23,111	1,414	18,099	- 487	16,382	+ 127,062	5,615	7,091	- 1,475	2019
30,034	83,740	33,076	36,383	.	.	15,963	- 750	14,281	+ 83,611	5,005	6,989	- 1,984	2020
35,913	106,246	56,790	32,419	17,990	1,466	14,110	- 1,148	17,037	+ 120,632	4,754	7,820	- 3,065	2021
77,938	160,637	68,138	38,858	.	.	14,077	- 666	53,641	+ 119,168	4,733	10,123	- 5,390	2022
159,407	249,161	77,424	52,858	.	.	19,023	4,827	118,879	+ 134,966	4,006	8,337	- 4,332	2023
166,974	262,850	78,764	54,875	24,479	1,358	22,106	6,931	129,211	+ 143,535	4,879	5,522	- 642	2024
14,881	50,671	16,470	23,861	20,546	244	3,372	- 301	10,339	+ 15,899	28	5,022	- 4,994	2022 Q2
21,332	37,779	17,665	5,336	.	.	3,543	- 179	14,778	+ 32,685	134	1,641	- 1,507	Q3
30,072	43,848	18,491	4,233	30	265	3,807	131	21,124	+ 37,079	4,489	1,779	+ 2,711	Q4
34,244	53,546	18,946	8,091	3,180	235	4,130	545	26,509	+ 32,849	120	1,514	- 1,395	2023 Q1
38,929	78,221	19,317	29,295	23,426	257	4,581	1,031	29,609	+ 17,361	38	4,078	- 4,040	Q2
41,719	57,817	19,380	7,398	623	393	4,885	1,497	31,039	+ 41,389	56	1,368	- 1,312	Q3
44,515	59,577	19,781	8,074	.	.	5,426	1,753	31,722	+ 43,367	3,792	1,377	+ 2,416	Q4
41,691	60,351	19,194	8,915	2,506	217	4,435	1,756	32,243	+ 38,712	368	1,202	- 834	2024 Q1
42,676	80,331	19,597	28,792	21,694	253	5,084	1,760	31,942	+ 22,999	201	1,340	- 1,139	Q2
41,713	60,239	19,643	8,643	210	340	6,292	1,801	31,952	+ 40,422	25	1,446	- 1,420	Q3
40,895	61,929	20,330	8,525	68	548	6,295	1,614	33,074	+ 41,401	4,286	1,535	+ 2,751	Q4
38,385	50,938	20,266	6,289	2,897	174	1,498	1,720	24,383	+ 47,533	55	1,409	- 1,354	2025 Q1
8,600	13,617	5,997	1,294	13	41	1,238	3	6,327	+ 10,736	1,498	557	+ 941	2022 Oct.
10,034	14,720	6,166	1,479	13	153	1,271	42	7,075	+ 11,362	1,496	658	+ 838	Nov.
11,438	15,511	6,329	1,460	5	71	1,299	86	7,722	+ 14,980	1,495	564	+ 931	Dec.
10,771	16,824	6,249	2,268	763	38	1,336	131	8,306	+ 11,079	40	545	- 505	2023 Jan.
11,426	19,084	6,258	3,962	2,363	55	1,363	181	8,864	+ 9,145	41	507	- 466	Feb.
12,048	17,638	6,439	1,860	53	143	1,431	233	9,339	+ 12,624	38	462	- 424	Mar.
12,346	20,079	6,296	4,235	2,418	47	1,477	292	9,548	+ 10,955	13	481	- 468	Apr.
13,087	37,899	6,359	21,551	19,577	65	1,562	346	9,990	- 5,869	12	451	- 439	May
13,497	20,243	6,662	3,510	1,431	145	1,542	393	10,071	+ 12,276	13	3,146	- 3,133	June
13,428	19,456	6,442	2,817	595	187	1,580	454	10,196	+ 11,788	20	483	- 463	July
13,889	18,941	6,460	2,117	4	10	1,621	502	10,365	+ 15,552	17	519	- 502	Aug.
14,402	19,420	6,479	2,464	24	216	1,684	541	10,477	+ 14,049	19	366	- 347	Sep.
14,114	19,550	6,531	2,419	3	93	1,753	570	10,600	+ 12,742	1,263	495	+ 768	Oct.
14,723	19,718	6,613	2,571	0	151	1,823	596	10,535	+ 13,647	1,263	464	+ 800	Nov.
15,678	20,310	6,638	3,084	.	.	1,850	587	10,588	+ 16,977	1,266	418	+ 848	Dec.
13,754	19,422	6,377	2,104	7	102	1,405	590	10,942	+ 13,144	16	402	- 386	2024 Jan.
13,912	22,039	6,407	4,580	2,449	30	1,516	585	11,052	+ 10,477	50	467	- 417	Feb.
14,025	18,890	6,410	2,231	50	86	1,514	582	10,249	+ 15,091	302	333	- 32	Mar.
13,826	23,666	6,362	6,593	4,412	31	1,569	581	10,711	+ 10,444	67	463	- 395	Apr.
14,484	33,572	6,413	16,474	14,135	63	1,690	586	10,685	+ 1,804	67	451	- 383	May
14,366	23,092	6,822	5,725	3,147	159	1,824	594	10,546	+ 10,751	66	426	- 360	June
13,848	20,132	6,538	3,184	197	150	2,229	607	10,411	+ 12,761	9	449	- 440	July
13,977	19,856	6,579	2,656	4	37	2,011	605	10,621	+ 14,123	10	495	- 485	Aug.
13,887	20,250	6,526	2,803	9	153	2,052	589	10,921	+ 13,538	6	501	- 495	Sep.
13,182	19,775	6,599	2,887	2	258	2,069	559	10,289	+ 13,344	11	548	- 537	Oct.
13,176	20,905	6,686	2,899	2	272	2,089	535	11,320	+ 12,959	25	493	- 468	Nov.
14,537	21,250	7,045	2,740	65	18	2,137	520	11,465	+ 15,099	4,249	493	+ 3,756	Dec.
13,061	19,150	6,727	2,693	16	17	2,065	595	9,730	+ 12,742	16	494	- 477	2025 Jan.
12,664	17,587	6,737	3,268	2,849	42	- 195	572	7,582	+ 15,101	20	449	- 430	Feb.
12,660	14,201	6,802	328	32	116	- 372	553	7,071	+ 19,690	19	466	- 447	Mar.

II. Current account

4. Primary income

b) Income from direct investment, other investment income

€ million

Period	Income from direct investment 1					Expenditure					
	Receipts					Expenditure					
	Total	Equity	Dividends and other distributed profits 2	Reinvested earnings 3	Other 4	Total	Equity	Dividends and other distributed profits 2	Reinvested earnings 3	Other 4	
1	2	3	4	5	6	7	8	9	10	11	
2010	74,796	67,130	39,239	19,962	7,930	7,666	43,498	24,505	19,083	3,572	1,849
2011	84,638	77,364	38,599	31,348	7,418	7,274	40,073	21,812	20,435	665	2,042
2012	73,790	67,275	40,457	20,009	6,810	6,515	40,893	23,872	19,901	1,155	2,816
2013	77,926	71,062	46,680	17,947	6,434	6,865	35,015	17,425	19,601	5,031	2,854
2014	75,597	68,945	45,153	17,965	5,827	6,652	38,991	22,168	17,171	1,533	3,464
2015	75,562	68,242	.	11,948	.	7,320	35,170	18,574	.	3,032	.
2016	101,442	94,146	51,879	36,651	5,617	7,295	36,653	21,423	22,994	4,730	3,159
2017	94,565	87,578	61,830	20,181	5,567	6,987	47,631	32,502	23,295	6,512	2,695
2018	137,837	130,913	67,589	58,240	5,084	6,923	42,963	28,328	22,897	2,227	3,204
2019	135,241	128,494	69,201	53,473	5,821	6,747	43,669	28,350	26,068	955	3,237
2020	80,835	75,144	67,006	2,637	5,501	5,690	33,076	18,484	17,216	2,264	3,533
2021	132,952	126,949	69,247	52,145	5,557	6,003	56,790	41,596	21,453	15,919	4,224
2022	138,529	128,584	78,938	42,816	6,831	9,945	68,138	46,490	21,589	20,572	4,330
2023	148,502	133,111	97,707	26,890	8,515	15,391	77,424	46,171	37,466	3,605	5,100
2024	150,975	136,833	83,713	46,610	6,510	14,142	78,764	46,298	32,510	8,390	5,398
2022 Q2	34,161	31,938	18,744	11,673	1,520	2,223	16,470	11,507	4,929	5,624	954
Q3	34,102	31,427	18,872	10,828	1,727	2,676	17,665	11,885	7,910	2,813	1,163
Q4	35,142	31,998	25,696	4,045	2,257	3,144	18,491	11,926	5,902	4,794	1,230
2023 Q1	35,552	32,020	23,239	7,164	1,617	3,532	18,946	11,618	3,834	6,675	1,109
Q2	36,786	32,998	24,171	6,850	1,977	3,788	19,317	11,548	14,031	3,706	1,224
Q3	38,176	34,205	19,307	12,152	2,746	3,971	19,380	11,347	9,012	1,164	1,171
Q4	37,989	33,889	30,990	724	2,175	4,100	19,781	11,658	10,589	527	1,596
2024 Q1	37,219	33,503	14,746	17,113	1,645	3,716	19,194	11,078	3,517	6,483	1,078
Q2	37,403	33,681	19,948	12,224	1,510	3,722	19,597	11,480	13,815	3,756	1,421
Q3	37,913	34,407	21,515	11,222	1,670	3,506	19,643	11,527	7,941	2,313	1,272
Q4	38,439	35,241	27,504	6,051	1,686	3,198	20,330	12,213	7,237	3,349	1,627
2025 Q1	38,774	35,794	15,202	19,330	1,262	2,980	20,266	12,212	3,552	7,465	1,195
2022 Oct.	11,605	10,603	3,078	6,794	731	1,002	5,997	3,913	1,016	2,562	335
Nov.	11,416	10,358	6,388	3,517	453	1,059	6,166	3,963	2,329	1,239	396
Dec.	12,121	11,038	16,230	6,265	1,072	1,084	6,329	4,050	2,557	994	499
2023 Jan.	11,772	10,630	14,816	4,762	576	1,142	6,249	3,876	298	3,228	350
Feb.	11,715	10,535	1,928	8,208	398	1,181	6,258	3,808	858	2,645	305
Mar.	12,065	10,855	6,495	3,717	643	1,210	6,439	3,934	2,679	802	454
Apr.	12,075	10,835	5,561	4,720	555	1,240	6,296	3,768	2,525	935	308
May	11,980	10,712	11,277	934	369	1,268	6,359	3,768	8,896	5,455	327
June	12,731	11,451	7,333	3,065	1,053	1,280	6,662	4,012	2,610	813	589
July	12,494	11,200	7,382	3,065	753	1,294	6,442	3,796	2,749	657	389
Aug.	12,404	11,080	5,299	5,189	591	1,324	6,460	3,776	1,481	1,910	385
Sep.	13,278	11,925	6,626	3,898	1,401	1,353	6,479	3,775	4,782	1,404	398
Oct.	12,524	11,158	9,217	1,335	606	1,366	6,531	3,833	5,891	2,526	468
Nov.	12,409	11,049	7,435	3,138	475	1,360	6,613	3,897	1,603	1,750	543
Dec.	13,056	11,682	14,338	3,750	1,094	1,373	6,638	3,928	3,095	249	584
2024 Jan.	12,411	11,181	7,142	3,455	584	1,230	6,377	3,680	395	2,940	344
Feb.	12,449	11,210	3,681	6,940	589	1,240	6,407	3,698	757	2,575	366
Mar.	12,359	11,112	3,922	6,718	472	1,247	6,410	3,700	2,365	968	367
Apr.	12,447	11,203	3,869	6,807	527	1,244	6,362	3,665	4,730	1,390	325
May	12,442	11,202	7,781	2,940	481	1,241	6,413	3,704	6,101	2,750	352
June	12,514	11,277	8,299	2,476	503	1,236	6,822	4,112	2,984	384	744
July	12,728	11,511	7,592	3,246	674	1,217	6,538	3,841	1,830	1,560	451
Aug.	12,573	11,411	6,945	3,964	502	1,162	6,579	3,869	3,111	305	453
Sep.	12,611	11,485	6,978	4,012	494	1,126	6,526	3,816	3,000	448	368
Oct.	12,836	11,747	5,457	5,624	667	1,089	6,599	3,902	1,664	1,821	417
Nov.	12,651	11,591	6,454	4,726	411	1,060	6,686	3,976	3,746	219	449
Dec.	12,952	11,903	15,593	4,299	609	1,049	7,045	4,335	1,827	1,747	761
2025 Jan.	11,890	11,890	8,758	2,648	483	-	6,727	4,081	882	2,744	456
Feb.	13,348	11,859	2,456	9,058	345	1,488	6,737	4,032	720	2,954	358
Mar.	13,536	12,045	3,989	7,623	433	1,491	6,802	4,099	1,950	1,767	382

1 For a definition of direct investment, see table IV. 1b). 2 Other distributed profits are dividends and withdrawals from income of quasi-corporations. 3 Estimated on the basis

of the figures on the level of direct investment stocks abroad and in the Federal Republic of Germany (see Statistical series on direct investment statistics). 4 Includes

II. Current account

4. Primary income

b) Income from direct investment, other investment income

€ million

		Other investment income ⁵											
		Receipts				Expenditure							
Interest on loans	Balance	Total	of which:			Total	of which:			Balance			
			Monetary financial institutions ⁶	Enterprises and households ⁶	General government		Monetary financial institutions ⁶	Enterprises and households ⁶	General government				
12	13	14	15	16	17	18	19	20	21	22	Period		
18,994	+	31,297	39,343	18,232	13,333	3,919	30,648	15,519	10,081	3,270	+	8,695	2010
18,261	+	44,565	42,803	20,059	15,233	2,471	28,429	14,470	9,994	1,340	+	14,374	2011
17,021	+	32,897	39,210	14,337	15,585	2,417	21,152	10,361	8,180	799	+	18,058	2012
17,590	+	42,911	32,371	11,878	14,068	2,636	19,480	8,558	8,213	1,535	+	12,891	2013
16,822	+	36,606	31,267	11,890	15,419	2,741	17,565	8,012	7,937	1,197	+	13,701	2014
16,596	+	40,393	30,672	11,134	16,268	2,507	18,344	8,237	8,697	1,260	+	12,328	2015
15,230	+	64,789	31,149	12,336	15,416	2,495	16,875	8,003	7,479	1,354	+	14,274	2016
15,129	+	46,934	34,203	13,796	16,507	2,840	16,902	8,149	6,968	1,719	+	17,301	2017
14,635	+	94,874	36,017	14,558	17,120	3,062	17,983	8,962	7,306	1,672	+	18,034	2018
15,319	+	91,572	33,151	12,801	17,288	2,454	16,382	7,947	7,815	1,281	+	16,769	2019
14,591	+	47,759	30,034	10,017	16,953	1,998	14,281	5,962	7,858	990	+	15,753	2020
15,194	+	76,161	35,913	11,624	21,354	2,175	17,037	7,418	9,609	814	+	18,876	2021
21,648	+	70,391	77,938	42,101	25,912	2,097	53,641	38,076	12,366	665	+	24,298	2022
31,253	+	71,078	159,407	82,608	30,859	3,271	118,879	76,648	17,040	858	+	40,528	2023
32,467	+	72,211	166,974	86,626	30,671	3,545	129,211	85,338	17,533	855	+	37,763	2024
4,964	+	17,691	14,881	8,561	5,725	476	10,339	7,584	2,936	156	+	4,542	2022 Q2
5,780	+	16,437	21,332	12,152	6,968	530	14,778	11,031	3,111	165	+	6,555	Q3
6,565	+	16,651	30,072	15,809	7,760	597	21,124	14,739	3,394	180	+	8,947	Q4
7,328	+	16,606	34,244	18,784	6,284	752	26,509	17,586	3,924	208	+	7,735	2023 Q1
7,768	+	17,469	38,929	20,523	7,247	824	29,609	19,180	4,238	217	+	9,320	Q2
8,033	+	18,796	41,719	21,436	8,017	848	31,039	19,893	4,360	219	+	10,680	Q3
8,123	+	18,208	44,515	21,865	9,312	847	31,722	19,989	4,518	214	+	12,793	Q4
8,116	+	18,026	41,691	21,772	6,579	873	32,243	20,623	4,424	219	+	9,448	2024 Q1
8,117	+	17,807	42,676	21,799	7,621	901	31,942	20,597	4,408	215	+	10,734	Q2
8,117	+	18,269	41,713	21,637	7,454	897	31,952	21,198	4,118	214	+	9,760	Q3
8,117	+	18,109	40,895	21,418	9,017	875	33,074	22,920	4,582	208	+	7,821	Q4
8,054	+	18,508	38,385	22,113	7,015	214	24,383	17,355	899	204	+	14,002	2025 Q1
2,084	+	5,608	8,600	4,848	2,025	187	6,327	4,508	1,094	58	+	2,273	2022 Oct.
2,202	+	5,250	10,034	5,317	2,512	195	7,075	4,962	1,109	57	+	2,959	Nov.
2,279	+	5,793	11,438	5,644	3,223	215	7,722	5,268	1,191	65	+	3,715	Dec.
2,373	+	5,523	10,771	5,988	1,966	237	8,306	5,568	1,256	65	+	2,464	2023 Jan.
2,450	+	5,457	11,426	6,303	2,057	259	8,864	5,921	1,265	71	+	2,562	Feb.
2,505	+	5,626	12,048	6,493	2,261	257	9,339	6,097	1,403	72	+	2,709	Mar.
2,528	+	5,780	12,346	6,663	2,151	262	9,548	6,234	1,345	73	+	2,797	Apr.
2,590	+	5,621	13,087	6,882	2,468	282	9,990	6,433	1,485	73	+	3,097	May
2,650	+	6,069	13,497	6,978	2,627	280	10,071	6,513	1,408	71	+	3,426	June
2,646	+	6,052	13,428	7,063	2,402	279	10,196	6,558	1,433	74	+	3,232	July
2,684	+	5,944	13,889	7,172	2,631	288	10,365	6,647	1,457	73	+	3,524	Aug.
2,704	+	6,800	14,402	7,202	2,984	281	10,477	6,688	1,471	72	+	3,924	Sep.
2,698	+	5,993	14,114	7,287	2,455	279	10,600	6,718	1,506	71	+	3,514	Oct.
2,716	+	5,797	14,723	7,302	2,947	288	10,535	6,672	1,450	71	+	4,189	Nov.
2,710	+	6,418	15,678	7,276	3,910	280	10,588	6,600	1,561	72	+	5,090	Dec.
2,697	+	6,034	13,754	7,238	2,051	288	10,942	7,029	1,491	74	+	2,812	2024 Jan.
2,710	+	6,042	13,912	7,265	2,200	295	11,052	7,202	1,450	72	+	2,860	Feb.
2,710	+	5,949	14,025	7,269	2,328	291	10,249	6,392	1,484	72	+	3,776	Mar.
2,697	+	6,085	13,826	7,228	2,165	300	10,711	6,952	1,424	72	+	3,115	Apr.
2,710	+	6,029	14,484	7,280	2,785	298	10,685	6,904	1,472	71	+	3,799	May
2,710	+	5,692	14,366	7,292	2,672	303	10,546	6,741	1,511	72	+	3,820	June
2,697	+	6,190	13,848	7,208	2,247	300	10,411	6,723	1,397	72	+	3,438	July
2,710	+	5,994	13,977	7,222	2,523	296	10,621	7,026	1,364	71	+	3,357	Aug.
2,710	+	6,085	13,887	7,207	2,683	301	10,921	7,449	1,358	71	+	2,966	Sep.
2,697	+	6,237	13,182	7,107	2,430	291	10,289	6,969	1,381	70	+	2,893	Oct.
2,710	+	5,965	13,176	7,149	2,585	293	11,320	8,241	1,244	70	+	1,857	Nov.
2,710	+	5,907	14,537	7,161	4,002	291	11,465	7,709	1,957	68	+	3,071	Dec.
2,646	+	5,163	13,061	7,385	2,415	176	9,730	5,812	1,455	69	+	3,331	2025 Jan.
2,706	+	6,611	12,664	7,372	2,225	27	7,582	5,816	248	67	+	5,082	Feb.
2,703	+	6,735	12,660	7,355	2,375	10	7,071	5,727	308	68	+	5,589	Mar.

leasing and rents on land and profits from long-term construction sites. ⁵ Excl. receipts from direct investment. Incl. interest on bank deposits. ⁶ Sectors classified into

respective groups of countries, see "Explanatory notes and lists".

II. Current account

5. Secondary income

€ million

Period	Secondary income								
	Receipts	Expenditure	Balance	General government				Social benefits	
				Receipts		Expenditure			
				Total	of which: Current taxes on income, wealth, etc.	Total	of which: Value added tax and gross national income- based on Union own resources		
1	2	3	4	5	6	7	8		
2010	47,436	83,752	-	36,317	12,180	4,282	33,179	20,651	.
2011	55,538	87,061	-	31,523	14,767	6,469	32,206	19,893	.
2012	57,202	92,713	-	35,511	13,053	4,843	34,833	21,854	.
2013	64,520	104,738	-	40,218	14,861	6,247	40,249	26,870	.
2014	61,785	103,228	-	41,443	11,186	8,158	39,681	26,434	.
2015	71,152	109,923	-	38,770	14,853	10,565	39,154	25,675	.
2016	64,727	102,985	-	38,259	13,982	10,850	36,963	21,263	.
2017	66,367	117,332	-	50,964	13,535	9,783	36,939	19,582	.
2018	68,879	118,600	-	49,722	14,336	10,195	42,664	25,217	.
2019	79,538	129,914	-	50,375	15,763	11,714	45,378	25,836	.
2020	81,180	134,586	-	53,406	15,111	10,959	50,118	28,088	.
2021	98,680	158,627	-	59,947	20,589	11,840	57,853	34,457	.
2022	106,377	174,818	-	68,441	20,887	14,036	61,360	32,303	.
2023	113,251	180,922	-	67,671	22,020	14,605	58,724	28,293	.
2024	125,129	188,943	-	63,813	20,216	14,881	55,943	26,540	.
2022 Q2	30,157	43,269	-	13,112	8,842	7,347	14,674	8,579	.
Q3	24,802	42,225	-	17,423	3,583	2,120	15,102	8,380	.
Q4	26,464	48,129	-	21,665	4,606	2,081	17,576	6,715	.
2023 Q1	27,238	43,843	-	16,605	4,463	2,419	14,447	6,834	.
Q2	32,362	42,473	-	10,110	9,488	7,978	13,201	7,472	.
Q3	26,151	41,997	-	15,846	3,567	2,037	13,546	7,313	.
Q4	27,499	52,609	-	25,110	4,501	2,172	17,530	6,673	.
2024 Q1	27,993	44,116	-	16,123	3,896	2,787	13,188	6,114	.
Q2	33,342	43,662	-	10,320	9,018	7,705	12,167	6,181	.
Q3	27,738	43,205	-	15,467	3,469	2,114	12,660	6,549	.
Q4	36,057	57,961	-	21,904	3,833	2,276	17,927	7,695	.
2025 Q1	30,507	46,559	-	16,051	4,506	3,358	13,118	7,356	2,348
2022 Oct.	8,475	13,961	-	5,486	1,323	520	4,672	2,105	.
Nov.	8,489	14,555	-	6,065	1,236	416	5,265	2,718	.
Dec.	9,499	19,613	-	10,114	2,048	1,145	7,640	1,892	.
2023 Jan.	8,727	13,715	-	4,989	1,152	475	4,244	1,700	.
Feb.	9,274	14,416	-	5,142	1,685	1,000	4,839	2,648	.
Mar.	9,238	15,712	-	6,474	1,626	945	5,364	2,486	.
Apr.	9,365	14,406	-	5,041	1,668	1,185	4,763	2,392	.
May	13,718	13,863	-	145	6,069	5,532	3,993	2,540	.
June	9,279	14,204	-	4,924	1,750	1,261	4,445	2,540	.
July	8,592	14,453	-	5,860	1,046	538	4,859	2,540	.
Aug.	8,367	13,454	-	5,087	899	379	4,156	2,233	.
Sep.	9,192	14,091	-	4,898	1,622	1,120	4,531	2,540	.
Oct.	8,695	14,961	-	6,265	1,126	392	5,273	2,574	.
Nov.	8,827	14,996	-	6,169	1,204	446	5,303	2,605	.
Dec.	9,977	22,653	-	12,675	2,171	1,333	6,955	1,494	.
2024 Jan.	8,970	13,592	-	4,623	949	540	3,356	1,289	.
Feb.	9,486	14,608	-	5,122	1,471	1,128	4,166	2,297	.
Mar.	9,537	15,915	-	6,379	1,476	1,119	5,666	2,528	.
Apr.	10,347	14,079	-	3,732	2,145	1,657	3,640	1,887	.
May	12,689	14,198	-	1,509	4,619	4,189	3,906	1,887	.
June	10,306	15,384	-	5,079	2,254	1,859	4,621	2,407	.
July	9,026	14,843	-	5,817	819	403	4,406	2,183	.
Aug.	9,065	14,217	-	5,152	1,021	520	4,244	2,183	.
Sep.	9,647	14,145	-	4,498	1,628	1,191	4,010	2,183	.
Oct.	9,177	15,209	-	6,032	965	510	4,586	2,183	.
Nov.	9,219	16,496	-	7,278	994	458	5,886	2,183	.
Dec.	17,661	26,256	-	8,594	1,873	1,307	7,454	3,329	.
2025 Jan.	9,829	15,404	-	5,575	1,170	756	4,550	2,480	781
Feb.	10,302	15,544	-	5,241	1,643	1,277	4,679	2,436	784
Mar.	10,376	15,611	-	5,235	1,693	1,325	3,889	2,440	783

1 Includes insurance premiums and claims (excl. life insurance policies). 2 Transfers between resident and non-resident households.

II. Current account

5. Secondary income

€ million

		All sectors excl. general government ¹							
Balance	Receipts	Expenditure			Balance		Period		
		Total	of which:		Social contributions				
9	10	11	Personal transfers ²	of which: Workers' remittances		14	15		
-	20,999	35,256	50,573	3,035	3,035	2,790	-	15,317	2010
-	17,439	40,772	54,855	2,977	2,977	2,795	-	14,083	2011
-	21,781	44,149	57,879	2,952	2,952	3,757	-	13,730	2012
-	25,388	49,659	64,488	3,250	3,229	2,839	-	14,830	2013
-	28,495	50,600	63,547	3,476	3,451	2,555	-	12,948	2014
-	24,302	56,300	70,768	3,540	3,523	3,279	-	14,468	2015
-	22,981	50,744	66,022	4,214	4,196	2,808	-	15,278	2016
-	23,404	52,833	80,393	4,632	4,613	3,066	-	27,560	2017
-	28,329	54,543	75,936	5,152	5,142	3,848	-	21,393	2018
-	29,615	63,776	84,536	5,446	5,431	3,983	-	20,760	2019
-	35,008	66,069	84,467	5,926	5,908	4,043	-	18,398	2020
-	37,264	78,091	100,774	6,189	6,170	4,236	-	22,683	2021
-	40,473	85,490	113,458	8,049	7,149	4,465	-	27,968	2022
-	36,704	91,231	122,198	7,435	6,805	4,863	-	30,967	2023
-	35,727	104,914	133,000	8,361	7,734	4,963	-	28,087	2024
-	5,832	21,315	28,595	2,358	1,810	1,064	-	7,280	2022 Q2
-	11,519	21,219	27,123	1,841	1,810	1,061	-	5,904	Q3
-	12,970	21,858	30,552	1,851	1,810	1,249	-	8,695	Q4
-	9,984	22,775	29,396	1,888	1,731	1,195	-	6,621	2023 Q1
-	3,712	22,874	29,272	1,849	1,691	1,168	-	6,398	Q2
-	9,979	22,584	28,451	1,847	1,691	1,156	-	5,867	Q3
-	13,029	22,998	35,079	1,851	1,691	1,344	-	12,081	Q4
-	9,292	24,097	30,927	2,090	1,933	1,236	-	6,831	2024 Q1
-	3,149	24,324	31,495	2,091	1,933	1,190	-	7,171	Q2
-	9,192	24,269	30,544	2,090	1,933	1,177	-	6,275	Q3
-	14,094	32,224	40,034	2,090	1,933	1,360	-	7,810	Q4
-	8,612	26,002	33,441	2,036	2,028	1,234	-	7,439	2025 Q1
-	3,349	7,153	9,289	610	600	377	-	2,137	2022 Oct.
-	4,029	7,253	9,290	620	600	379	-	2,036	Nov.
-	5,592	7,452	11,973	621	611	493	-	4,521	Dec.
-	3,092	7,575	9,471	656	603	399	-	1,896	2023 Jan.
-	3,154	7,589	9,577	616	564	398	-	1,988	Feb.
-	3,738	7,612	10,348	616	564	398	-	2,736	Mar.
-	3,094	7,696	9,643	617	564	389	-	1,946	Apr.
+	2,077	7,649	9,871	616	564	389	-	2,222	May
-	2,695	7,529	9,758	616	564	389	-	2,230	June
-	3,813	7,546	9,594	616	564	386	-	2,047	July
-	3,257	7,468	9,298	615	564	385	-	1,831	Aug.
-	2,909	7,570	9,559	615	564	385	-	1,990	Sep.
-	4,147	7,569	9,688	613	560	407	-	2,119	Oct.
-	4,099	7,623	9,693	613	560	407	-	2,070	Nov.
-	4,783	7,806	15,698	625	571	530	-	7,892	Dec.
-	2,407	8,021	10,236	697	644	413	-	2,215	2024 Jan.
-	2,695	8,015	10,442	697	644	411	-	2,427	Feb.
-	4,190	8,061	10,249	696	644	412	-	2,189	Mar.
-	1,494	8,202	10,440	697	644	398	-	2,238	Apr.
+	712	8,070	10,292	696	644	397	-	2,222	May
-	2,367	8,052	10,763	698	644	396	-	2,712	June
-	3,587	8,207	10,437	697	644	393	-	2,230	July
-	3,223	8,043	9,973	696	644	392	-	1,929	Aug.
-	2,381	8,019	10,135	697	644	392	-	2,116	Sep.
-	3,621	8,211	10,622	694	641	412	-	2,411	Oct.
-	4,892	8,224	10,610	693	641	411	-	2,386	Nov.
-	5,582	15,789	18,801	703	652	536	-	3,013	Dec.
-	3,380	8,659	10,854	679	676	412	-	2,195	2025 Jan.
-	3,037	8,660	10,864	679	676	412	-	2,204	Feb.
-	2,196	8,683	11,722	678	676	410	-	3,039	Mar.

II. Current account

6. Regional breakdown

a) Current account, by country and group of countries *

€ million

Period	Goods			Services			Primary income			Secondary income			Balance of current account
	Receipts	Expend- iture	Balance	Receipts	Expend- iture	Balance	Receipts	Expend- iture	Balance	Receipts	Expend- iture	Balance	
	1	2	3	4	5	6	7	8	9	10	11	12	
Rest of the world													
2019	1,173,898	960,697	+ 213,201	327,246	341,689	- 14,443	251,247	121,153	+ 130,094	79,538	129,914	- 50,375	+ 278,477
2020	1,061,150	883,409	+ 177,742	292,006	285,373	+ 6,633	188,818	101,757	+ 87,061	81,180	134,586	- 53,406	+ 218,031
2021	1,221,066	1,033,406	+ 187,660	348,863	345,030	+ 3,833	248,760	125,900	+ 122,860	98,680	158,627	- 59,947	+ 254,406
2022	1,401,916	1,268,684	+ 133,232	419,691	451,726	- 32,035	303,136	183,855	+ 119,281	106,377	174,818	- 68,441	+ 152,037
2023	1,392,316	1,165,202	+ 227,114	418,631	482,069	- 63,437	407,562	270,775	+ 136,787	113,251	180,922	- 67,671	+ 232,793
2024	1,365,143	1,129,637	+ 235,506	435,907	509,930	- 74,023	430,870	281,874	+ 148,995	125,129	188,943	- 63,813	+ 246,665
Europe													
2019	793,254	662,901	+ 130,353	205,541	227,916	- 22,375	181,953	103,111	+ 78,842	53,288	87,119	- 33,831	+ 152,989
2020	711,365	600,345	+ 111,020	187,863	191,544	- 3,681	125,676	88,506	+ 37,170	54,907	90,718	- 35,811	+ 108,698
2021	825,041	703,719	+ 121,321	209,746	233,809	- 24,064	169,560	109,707	+ 59,853	65,840	106,270	- 40,430	+ 116,681
2022	939,990	842,528	+ 97,462	254,361	305,631	- 51,270	217,364	157,578	+ 59,785	70,593	117,711	- 47,119	+ 58,858
2023	926,163	779,400	+ 146,763	263,852	324,796	- 60,944	309,428	233,946	+ 75,482	73,072	122,434	- 49,362	+ 111,939
2024	918,566	754,940	+ 163,626	277,622	345,884	- 68,262	312,894	237,230	+ 75,663	78,123	123,273	- 45,149	+ 125,879
EU Member States (27 excl. GB)													
2019	603,065	522,329	+ 80,736	141,234	173,522	- 32,288	143,170	81,174	+ 61,997	36,384	66,695	- 30,311	+ 80,133
2020	533,456	477,177	+ 56,279	127,086	143,522	- 16,436	99,201	64,183	+ 35,017	36,826	68,384	- 31,558	+ 43,303
2021	625,562	554,307	+ 71,256	143,162	176,134	- 32,972	124,931	86,650	+ 38,280	46,175	82,077	- 35,903	+ 40,662
2022	727,223	648,401	+ 78,822	175,323	234,508	- 59,185	166,472	111,545	+ 54,927	47,436	85,533	- 38,097	+ 36,467
2023	711,075	630,076	+ 80,999	184,282	248,464	- 64,182	243,698	167,825	+ 75,873	47,422	85,834	- 38,412	+ 54,278
2024	703,798	612,385	+ 91,413	195,197	264,149	- 68,951	254,138	171,193	+ 82,945	50,184	83,792	- 33,609	+ 71,798
Euro area (20)													
2019	429,342	361,680	+ 67,662	110,419	135,852	- 25,433	120,483	65,275	+ 55,208	32,346	36,396	- 4,050	+ 93,387
2020	373,876	322,860	+ 51,016	100,000	108,970	- 8,970	81,946	49,808	+ 32,138	32,434	35,998	- 3,564	+ 70,620
2021	440,577	377,671	+ 62,907	113,977	136,954	- 22,977	102,473	67,810	+ 34,663	37,794	42,062	- 4,268	+ 70,324
2022	516,142	440,430	+ 75,712	139,391	189,347	- 49,956	144,467	90,979	+ 53,489	40,561	48,068	- 7,507	+ 71,738
2023	512,102	416,067	+ 96,035	146,504	197,406	- 50,903	219,492	145,250	+ 74,243	39,536	51,640	- 12,104	+ 107,271
2024	502,382	403,220	+ 99,162	154,100	211,176	- 57,076	226,341	151,930	+ 74,410	44,687	51,801	- 7,114	+ 109,382
European Free Trade Association (EFTA)													
2019	59,438	57,120	+ 2,319	29,623	18,125	+ 11,498	16,578	10,931	+ 5,647	7,152	8,875	- 1,723	+ 17,740
2020	61,143	56,363	+ 4,780	27,348	16,312	+ 11,037	13,443	9,817	+ 3,626	6,382	8,420	- 2,038	+ 17,404
2021	69,924	67,903	+ 2,021	29,743	18,819	+ 10,924	16,270	8,845	+ 7,424	5,931	8,027	- 2,096	+ 18,273
2022	79,074	95,357	- 16,282	37,198	22,985	+ 14,213	18,551	15,260	+ 3,291	6,571	8,346	- 1,775	- 553
2023	73,353	79,967	- 6,614	38,155	25,050	+ 13,105	20,897	19,523	+ 1,374	8,322	9,849	- 1,527	+ 6,338
2024	69,356	77,842	- 8,487	40,257	27,556	+ 12,701	22,237	17,766	+ 4,471	10,783	12,835	- 2,052	+ 6,632
Other European countries (excl. EFTA)													
2019	130,750	83,452	+ 47,298	34,685	36,269	- 1,584	22,204	11,007	+ 11,198	9,752	11,549	- 1,796	+ 55,116
2020	116,766	66,805	+ 49,961	33,428	31,711	+ 1,718	13,033	14,506	- 1,473	11,699	13,914	- 2,215	+ 47,991
2021	129,555	81,510	+ 48,045	36,840	38,856	- 2,016	28,359	14,211	+ 14,148	13,734	16,165	- 2,431	+ 57,746
2022	133,693	98,771	+ 34,922	41,840	48,138	- 6,298	32,340	30,773	+ 1,567	16,586	23,833	- 7,246	+ 22,945
2023	141,736	69,357	+ 72,379	41,415	51,282	- 9,867	44,833	46,598	- 1,765	17,328	26,751	- 9,423	+ 51,324
2024	145,412	64,712	+ 80,700	42,168	54,179	- 12,012	36,519	48,271	- 11,752	17,157	26,646	- 9,489	+ 47,448
Africa													
2019	22,056	18,848	+ 3,208	3,970	6,874	- 2,904	2,027	606	+ 1,421	91	1,738	- 1,647	+ 78
2020	19,085	13,716	+ 5,369	3,087	3,702	- 616	1,621	- 2	+ 1,623	66	1,908	- 1,842	+ 4,534
2021	21,104	18,758	+ 2,346	3,476	4,084	- 607	1,825	- 36	+ 1,861	63	2,073	- 2,009	+ 1,590
2022	23,707	23,886	- 179	4,311	7,043	- 2,732	2,248	235	+ 2,013	83	1,997	- 1,914	- 2,813
2023	25,161	23,939	+ 1,222	4,356	8,767	- 4,411	2,523	618	+ 1,905	61	1,905	- 1,844	- 3,129
2024	23,147	23,345	- 198	4,556	8,282	- 3,726	3,997	709	+ 3,287	42	1,895	- 1,853	- 2,490
America													
2019	145,973	80,977	+ 64,996	63,390	56,984	+ 6,405	36,728	10,914	+ 25,814	23,435	27,652	- 4,217	+ 92,998
2020	121,003	71,773	+ 49,230	53,138	45,630	+ 7,507	33,791	10,308	+ 23,483	24,250	26,309	- 2,059	+ 78,161
2021	146,069	77,829	+ 68,240	77,185	53,315	+ 23,869	41,198	13,132	+ 28,066	30,209	32,963	- 2,753	+ 117,421
2022	185,501	104,012	+ 81,489	92,758	67,738	+ 25,020	45,898	18,428	+ 27,471	32,671	34,741	- 2,070	+ 131,911
2023	190,710	94,328	+ 96,382	86,466	74,841	+ 11,625	54,241	25,297	+ 28,944	36,443	38,611	- 2,168	+ 134,784
2024	191,811	94,268	+ 97,543	86,503	80,094	+ 6,409	69,734	32,503	+ 37,231	42,980	45,843	- 2,863	+ 138,320

* Countries classified into respective groups of countries, see "Explanatory notes and lists".

II. Current account

6. Regional breakdown

a) Current account, by country and group of countries *

€ million

Period	Goods			Services			Primary income			Secondary income			Balance of current account
	Receipts	Expend- iture	Balance	Receipts	Expend- iture	Balance	Receipts	Expend- iture	Balance	Receipts	Expend- iture	Balance	
	1	2	3	4	5	6	7	8	9	10	11	12	
Asia													
2019	197,734	193,138	+ 4,596	49,390	43,586	+ 5,804	27,106	3,929	+ 23,178	2,454	6,144	- 3,690	+ 29,887
2020	196,223	193,059	+ 3,164	43,552	38,767	+ 4,785	23,969	1,036	+ 22,933	1,652	6,081	- 4,429	+ 26,453
2021	213,313	228,636	- 15,323	53,499	46,339	+ 7,160	31,439	2,740	+ 28,699	2,259	6,740	- 4,480	+ 16,055
2022	232,948	290,670	- 57,723	62,426	62,670	- 243	32,706	5,913	+ 26,794	2,674	7,890	- 5,216	- 36,388
2023	230,322	261,049	- 30,727	58,364	64,386	- 6,022	35,429	8,627	+ 26,803	3,317	8,572	- 5,255	- 15,201
2024	212,787	250,237	- 37,450	61,653	66,213	- 4,560	37,685	9,012	+ 28,673	3,587	9,460	- 5,872	- 19,209
Australia, Oceania and polar regions													
2019	11,607	3,589	+ 8,018	3,214	3,243	- 29	1,666	1,912	- 245	159	198	- 39	+ 7,705
2020	11,844	3,567	+ 8,277	2,933	2,281	+ 652	2,150	1,551	+ 599	203	333	- 130	+ 9,398
2021	13,471	3,506	+ 9,965	3,588	2,786	+ 803	3,073	35	+ 3,039	186	260	- 75	+ 13,731
2022	14,918	6,429	+ 8,489	4,395	3,521	+ 874	2,937	1,015	+ 1,922	216	196	+ 20	+ 11,306
2023	14,676	5,311	+ 9,366	3,878	3,970	- 93	3,351	1,274	+ 2,077	195	208	- 13	+ 11,337
2024	13,674	5,135	+ 8,539	3,700	3,892	- 192	3,617	1,689	+ 1,928	209	254	- 45	+ 10,229
International organisations (excl. EU organisations)													
2019	- 6,642	- 4,619
2020	.	.	.	1,434	419	+ 1,014	- 8,685	- 6,126
2021	.	.	.	1,369	- 9,762	- 7,228
2022	.	.	.	1,440	.	.	1,983	- 11,677	- 9,424
2023	2,590	626	+ 1,964	.	.	- 8,807	- 5,493
2024	- 7,869	- 3,892
World not allocated													
2019	- 310	- 561
2020	.	.	.	0	3,028	- 3,028	- 449	- 3,088
2021	.	.	.	0	- 437	- 3,844
2022	.	.	.	0	- 466	- 1,413
2023	388	- 388	.	.	- 223	- 1,444
2024	- 162	- 2,171
Memo items:													
EU organisations (excl. ECB, ESM, EFSF)													
2019	.	-	.	.	161	.	7,280	7,237	+ 43	1,208	27,053	- 25,845	- 24,241
2020	.	-	6,514	7,109	- 595	1,520	29,302	- 27,782	- 26,699
2021	.	-	.	.	133	.	6,102	7,928	- 1,826	5,454	36,553	- 31,099	- 31,235
2022	.	-	.	.	205	.	6,037	10,281	- 4,244	3,394	33,114	- 29,719	- 31,684
2023	.	-	5,718	8,695	- 2,978	3,893	29,704	- 25,811	- 26,501
2024	.	-	7,374	6,438	+ 936	1,549	26,977	- 25,428	- 22,266
Offshore financial centers													
2019	15,525	10,142	+ 5,383	11,252	12,792	- 1,540	7,527	2,307	+ 5,220	6,138	6,289	- 151	+ 8,912
2020	14,503	9,579	+ 4,924	10,219	11,874	- 1,655	7,700	1,762	+ 5,938	6,441	6,657	- 216	+ 8,991
2021	17,896	12,067	+ 5,829	12,004	15,688	- 3,684	10,166	2,572	+ 7,594	7,890	8,120	- 229	+ 9,510
2022	18,728	14,689	+ 4,039	14,644	20,311	- 5,667	11,241	4,223	+ 7,017	6,803	6,840	- 37	+ 5,352
2023	20,328	11,901	+ 8,427	13,983	18,254	- 4,271	14,022	7,270	+ 6,752	7,674	7,709	- 35	+ 10,872
2024	18,166	11,267	+ 6,899	15,449	20,093	- 4,643	16,821	9,828	+ 6,993	9,544	9,720	- 176	+ 9,073
OECD countries													
2019	905,352	712,209	+ 193,143	264,203	274,875	- 10,673	202,152	106,851	+ 95,302	67,848	76,946	- 9,098	+ 268,674
2020	805,237	650,062	+ 155,175	236,589	227,863	+ 8,726	144,794	89,913	+ 54,881	72,462	79,954	- 7,493	+ 211,290
2021	934,705	746,622	+ 188,083	282,458	276,860	+ 5,598	193,466	110,835	+ 82,631	84,175	92,224	- 8,049	+ 268,263
2022	1,100,301	903,014	+ 197,288	343,496	362,838	- 19,343	239,972	159,471	+ 80,501	95,023	104,786	- 9,763	+ 248,683
2023	1,095,031	856,827	+ 238,205	346,522	388,549	- 42,027	304,378	223,888	+ 80,490	100,458	110,514	- 10,055	+ 266,612
2024	1,078,701	826,220	+ 252,481	358,887	413,490	- 54,603	314,042	231,689	+ 82,353	112,751	124,414	- 11,663	+ 268,568
OPEC countries													
2019	19,902	7,525	+ 12,377	4,528	4,514	+ 14	1,061	352	+ 710	101	443	- 343	+ 12,757
2020	17,971	4,148	+ 13,824	3,559	4,124	- 565	945	147	+ 798	50	446	- 396	+ 13,661
2021	18,252	6,415	+ 11,837	4,011	4,373	- 362	1,479	1,077	+ 402	57	478	- 421	+ 11,455
2022	23,199	12,967	+ 10,232	5,923	6,391	- 468	1,679	2,220	- 541	71	564	- 493	+ 8,730
2023	24,752	15,755	+ 8,997	6,083	5,798	+ 285	1,952	2,617	- 665	75	591	- 515	+ 8,101
2024	27,175	11,007	+ 16,168	5,866	5,885	- 19	2,325	2,342	- 17	35	821	- 786	+ 15,346

II. Current account

6. Regional breakdown

a) Current account, by country and group of countries *

€ million

Period	Goods			Services			Primary income			Secondary income			Balance of current account	
	Receipts	Expend- iture	Balance	Receipts	Expend- iture	Balance	Receipts	Expend- iture	Balance	Receipts	Expend- iture	Balance		
	1	2	3	4	5	6	7	8	9	10	11	12		13
Argentina														
2019	5	78	-	73	+ 2,023
2020	.	.	+ 1,028	.	.	+ 314	.	.	+ 135	4	37	-	32	+ 1,444
2021	.	.	+ 1,142	.	.	+ 465	.	.	+ 159	4	33	-	29	+ 1,737
2022	.	960	.	1,003	433	+ 570	.	8	.	6	41	-	34	+ 2,290
2023	.	.	+ 1,705	.	.	+ 306	.	.	+ 648	6	43	-	37	+ 2,622
2024	-	37	+ 2,233
Australia														
2019	9,977	2,736	+ 7,241	2,479	2,290	+ 189	1,324	1,769	- 445	149	171	-	22	+ 6,963
2020	9,616	2,704	+ 6,912	2,337	1,449	+ 887	1,907	1,481	+ 426	196	310	-	114	+ 8,112
2021	11,650	2,570	+ 9,080	2,970	1,511	+ 1,459	2,771	38	+ 2,809	175	238	-	64	+ 13,284
2022	12,908	5,187	+ 7,722	3,800	1,968	+ 1,833	2,550	892	+ 1,659	191	166	+ 26	+ 11,239	
2023	12,646	4,287	+ 8,360	3,332	2,396	+ 936	2,914	1,107	+ 1,808	184	186	-	1	+ 11,102
2024	12,049	3,364	+ 8,685	3,129	2,224	+ 905	2,791	1,494	+ 1,296	200	154	+ 47	+ 10,933	
Austria														
2019	58,359	39,866	+ 18,492	11,023	19,398	- 8,375	8,986	6,214	+ 2,772	2,306	3,056	-	750	+ 12,139
2020	52,570	35,970	+ 16,600	9,017	16,025	- 7,008	7,881	4,047	+ 3,835	2,511	3,331	-	820	+ 12,607
2021	63,297	42,992	+ 20,305	9,745	16,585	- 6,840	9,078	4,256	+ 4,821	2,568	3,252	-	684	+ 17,602
2022	77,756	52,137	+ 25,619	12,208	22,630	- 10,422	10,062	4,999	+ 5,063	2,682	3,992	-	1,310	+ 18,950
2023	69,954	47,436	+ 22,517	12,973	24,605	- 11,632	11,961	6,337	+ 5,625	2,723	4,472	-	1,749	+ 14,761
2024	67,255	45,451	+ 21,804	13,963	27,092	- 13,129	14,155	9,322	+ 4,833	3,201	4,924	-	1,723	+ 11,784
Belgium														
2019	39,327	36,036	+ 3,291	8,520	5,973	+ 2,547	2,325	10,444	- 8,119	652	421	+ 232	- 2,049	
2020	35,924	32,407	+ 3,517	7,497	5,547	+ 1,950	2,623	8,063	- 5,440	469	404	+ 65	+ 91	
2021	42,022	40,101	+ 1,921	8,346	6,077	+ 2,268	3,762	9,973	- 6,210	519	799	-	280	+ 2,301
2022	48,243	49,088	- 846	9,282	7,763	+ 1,519	4,734	9,978	- 5,244	661	1,126	-	465	+ 5,035
2023	48,556	43,346	+ 5,210	9,736	7,625	+ 2,111	6,291	13,092	- 6,800	645	1,279	-	634	- 114
2024	45,907	41,687	+ 4,220	9,746	8,138	+ 1,608	5,867	13,480	- 7,614	629	1,480	-	851	- 2,637
Brazil														
2019	10,107	5,769	+ 4,338	2,653	1,328	+ 1,325	1,245	20	+ 1,225	21	170	-	149	+ 6,739
2020	8,574	5,165	+ 3,409	2,024	980	+ 1,044	533	7	+ 526	20	137	-	117	+ 4,863
2021	11,119	6,262	+ 4,856	2,519	989	+ 1,530	1,418	8	+ 1,411	18	168	-	150	+ 7,647
2022	13,351	7,820	+ 5,532	3,084	1,479	+ 1,605	1,948	15	+ 1,932	15	219	-	204	+ 8,865
2023	13,038	7,057	+ 5,982	2,611	1,750	+ 860	2,043	27	+ 2,017	23	255	-	232	+ 8,626
2024	13,769	7,841	+ 5,928	2,988	1,756	+ 1,233	2,229	4	+ 2,226	22	258	-	236	+ 9,151
Bulgaria														
2019	.	3,965	.	.	1,256	.	217	127	+ 90	28	215	-	187	- 598
2020	209	92	+ 117	19	247	-	228	- 844
2021	.	5,055	.	.	1,210	.	277	90	+ 187	23	278	-	255	- 946
2022	.	6,513	.	.	1,739	.	312	156	+ 156	26	324	-	298	- 1,559
2023	351	426	- 76	29	327	-	298	- 1,182
2024	398	228	+ 170	36	432	-	396	- 1,710
Canada														
2019	12,591	5,633	+ 6,957	.	.	- 592	+ 8,018
2020	10,227	4,950	+ 5,277	.	.	- 99	+ 6,998
2021	11,524	5,317	+ 6,206	.	.	- 89	+ 5,876
2022	13,692	7,046	+ 6,646	.	.	- 62	+ 8,767
2023	14,324	6,037	+ 8,287	.	.	- 448	+ 10,857
2024	13,984	6,072	+ 7,912	.	.	- 129	+ 10,822
China														
2019	95,917	95,033	+ 884	17,277	8,808	+ 8,468	15,056	472	+ 14,583	279	1,397	-	1,118	+ 22,817
2020	100,831	101,121	- 290	16,162	8,102	+ 8,059	13,297	594	+ 12,703	72	1,279	-	1,350	+ 19,122
2021	110,992	122,248	- 11,256	20,209	9,633	+ 10,576	18,132	684	+ 17,448	165	1,471	-	1,306	+ 15,462
2022	109,180	152,669	- 43,489	19,662	11,281	+ 8,381	17,535	736	+ 16,799	166	1,590	-	1,424	- 19,732
2023	98,659	135,265	- 36,605	18,752	12,614	+ 6,138	18,074	1,439	+ 16,635	192	1,524	-	1,332	- 15,164
2024	90,341	134,471	- 44,130	20,113	13,352	+ 6,761	19,592	1,697	+ 17,896	206	1,728	-	1,522	- 20,995

II. Current account

6. Regional breakdown

a) Current account, by country and group of countries *

€ million

Period	Goods			Services			Primary income			Secondary income			Balance of current account
	Receipts	Expend- iture	Balance	Receipts	Expend- iture	Balance	Receipts	Expend- iture	Balance	Receipts	Expend- iture	Balance	
	1	2	3	4	5	6	7	8	9	10	11	12	
Croatia													
2019	- 1,683	.	.	+ 197	.	.	.	- 137
2020	2,998	1,313	+ 1,684	382	1,417	- 1,035	349	123	+ 227	65	738	- 673	+ 203
2021	3,611	1,655	+ 1,956	466	2,372	- 1,905	269	130	+ 139	84	746	- 662	+ 472
2022	4,664	1,959	+ 2,705	606	3,082	- 2,477	280	162	+ 118	74	781	- 707	+ 361
2023	4,968	2,001	+ 2,967	706	3,885	- 3,179	390	202	+ 188	80	812	- 732	+ 755
2024	5,241	2,137	+ 3,104	766	3,642	- 2,876	361	222	+ 139	80	994	- 914	+ 547
Cyprus													
2019	1,017	3,776	- 2,759	716	741	- 25	108	306	- 197	- 6	21	- 28	- 3,010
2020	1,007	2,949	- 1,942	589	611	- 22	- 43	- 399	+ 356	27	16	+ 11	- 1,597
2021	937	3,737	- 2,800	846	769	+ 77	77	89	- 12	17	16	+ 1	- 2,734
2022	1,021	4,881	- 3,860	984	999	- 15	39	302	- 263	20	25	- 5	- 4,143
2023	1,368	4,372	- 3,003	877	830	+ 48	69	490	- 421	27	32	- 6	- 3,382
2024	1,375	4,252	- 2,877	1,065	954	+ 111	356	529	- 173	21	30	- 9	- 2,948
Czechia													
2019	36,918	42,861	- 5,943	5,804	6,474	- 670	3,276	940	+ 2,336	661	333	+ 328	- 3,949
2020	32,244	39,913	- 7,668	4,494	5,079	- 586	1,754	1,180	+ 574	648	272	+ 376	- 7,304
2021	35,947	45,233	- 9,286	4,513	5,840	- 1,327	2,429	1,322	+ 1,107	691	322	+ 369	- 9,137
2022	43,654	54,028	- 10,373	5,860	7,641	- 1,781	2,623	1,737	+ 886	822	466	+ 356	- 10,912
2023	40,571	55,116	- 14,545	6,096	8,825	- 2,729	2,859	2,306	+ 553	991	596	+ 395	- 16,326
2024	39,767	54,704	- 14,937	6,348	8,804	- 2,456	3,017	2,261	+ 756	856	476	+ 381	- 16,256
Denmark													
2019	18,224	10,675	+ 7,548	4,596	5,623	- 1,027	2,009	720	+ 1,290	336	460	- 125	+ 7,687
2020	17,299	10,143	+ 7,156	3,856	5,344	- 1,488	1,787	476	+ 1,311	293	276	+ 16	+ 6,996
2021	19,488	11,662	+ 7,827	4,347	6,948	- 2,601	1,774	782	+ 991	272	327	- 55	+ 6,162
2022	21,357	14,806	+ 6,551	6,105	5,672	+ 433	2,356	1,007	+ 1,349	324	548	- 224	+ 8,109
2023	19,374	13,727	+ 5,647	6,161	6,476	- 315	3,105	2,494	+ 611	422	476	- 53	+ 5,889
2024	19,569	13,228	+ 6,341	6,308	6,576	- 268	3,054	1,743	+ 1,311	369	587	- 218	+ 7,166
Estonia													
2019	1,679	825	+ 854	270	658	- 388	44	1	+ 43	5	12	- 7	+ 501
2020	1,571	782	+ 789	932	526	+ 405	37	2	+ 34	6	16	- 10	+ 1,219
2021	2,077	816	+ 1,262	445	492	- 47	417	10	+ 407	7	24	- 17	+ 1,605
2022	2,361	912	+ 1,449	454	586	- 132	45	52	- 7	9	23	- 14	+ 1,296
2023	2,440	888	+ 1,552	411	612	- 201	83	206	- 124	12	32	- 20	+ 1,208
2024	2,327	847	+ 1,480	455	676	- 221	88	21	+ 67	13	34	- 21	+ 1,305
Finland													
2019	7,517	6,958	+ 559	1,599	1,549	+ 51	1,274	381	+ 892	98	257	- 160	+ 1,343
2020	7,497	5,477	+ 2,020	1,371	1,337	+ 34	1,095	190	+ 905	106	174	- 68	+ 2,890
2021	8,616	6,041	+ 2,575	1,617	1,581	+ 36	1,279	- 259	+ 1,538	126	248	- 121	+ 4,028
2022	9,255	7,613	+ 1,643	2,048	1,879	+ 169	1,635	19	+ 1,616	114	290	- 176	+ 3,251
2023	10,275	7,198	+ 3,077	2,015	2,052	- 37	2,837	320	+ 2,517	127	332	- 205	+ 5,352
2024	8,895	7,065	+ 1,830	2,255	2,007	+ 247	2,514	202	+ 2,312	133	295	- 162	+ 4,228
France													
2019	96,022	54,062	+ 41,960	24,209	21,000	+ 3,209	15,329	9,704	+ 5,625	10,942	9,404	+ 1,538	+ 52,332
2020	80,977	45,669	+ 35,308	21,334	16,141	+ 5,193	11,526	8,554	+ 2,972	12,015	10,271	+ 1,745	+ 45,218
2021	92,431	52,690	+ 39,741	24,074	20,601	+ 3,472	14,412	12,671	+ 1,741	14,014	11,993	+ 2,020	+ 46,974
2022	105,907	60,585	+ 45,322	28,161	26,669	+ 1,492	20,759	17,226	+ 3,533	13,829	12,253	+ 1,575	+ 51,922
2023	108,585	60,126	+ 48,459	29,594	29,948	- 354	33,335	27,405	+ 5,930	13,248	12,068	+ 1,180	+ 55,215
2024	102,604	59,258	+ 43,347	29,898	32,237	- 2,339	26,668	26,380	+ 289	15,524	14,087	+ 1,437	+ 42,734
Greece													
2019	5,159	2,054	+ 3,105	1,180	4,933	- 3,753	1,665	119	+ 1,546	7	980	- 973	- 75
2020	4,550	2,088	+ 2,462	735	2,737	- 2,002	1,046	20	+ 1,026	10	957	- 947	+ 538
2021	5,307	2,638	+ 2,669	952	5,784	- 4,832	1,047	26	+ 1,021	10	1,018	- 1,009	- 2,150
2022	6,279	2,950	+ 3,329	1,295	6,954	- 5,659	1,398	68	+ 1,329	28	948	- 920	- 1,921
2023	6,452	3,042	+ 3,410	1,616	5,772	- 4,157	1,872	248	+ 1,624	22	835	- 813	+ 65
2024	6,380	3,192	+ 3,188	1,593	6,412	- 4,819	1,806	311	+ 1,495	41	844	- 803	- 939

II. Current account

6. Regional breakdown

a) Current account, by country and group of countries *

€ million

Period	Goods			Services			Primary income			Secondary income			Balance of current account
	Receipts	Expend- iture	Balance	Receipts	Expend- iture	Balance	Receipts	Expend- iture	Balance	Receipts	Expend- iture	Balance	
	1	2	3	4	5	6	7	8	9	10	11	12	
Hong Kong													
2019	3,620	1,418	+ 2,202	2,881	2,838	+ 43	2,045	227	+ 1,818	65	30	+ 34	+ 4,098
2020	3,520	1,647	+ 1,872	2,656	2,760	- 104	2,128	- 101	+ 2,230	55	48	+ 7	+ 4,005
2021	3,733	1,372	+ 2,360	3,071	3,861	- 790	2,255	145	+ 2,110	60	35	+ 25	+ 3,706
2022	4,196	1,692	+ 2,504	3,727	4,822	- 1,095	2,851	535	+ 2,316	64	34	+ 29	+ 3,754
2023	4,480	1,410	+ 3,070	3,064	4,169	- 1,104	3,028	766	+ 2,262	53	17	+ 35	+ 4,263
2024	4,330	1,195	+ 3,135	3,358	4,238	- 880	3,122	713	+ 2,409	43	35	+ 9	+ 4,673
Hungary													
2019	20,134	25,214	- 5,081	2,780	3,323	- 543	1,905	293	+ 1,612	148	351	- 203	- 4,215
2020	17,829	24,002	- 6,174	2,492	2,793	- 301	1,264	358	+ 906	145	393	- 248	- 5,817
2021	20,770	26,432	- 5,662	2,472	2,860	- 388	1,773	306	+ 1,467	146	387	- 241	- 4,824
2022	21,499	31,025	- 9,526	2,805	3,499	- 694	1,997	432	+ 1,565	181	624	- 443	- 9,099
2023	19,003	33,727	- 14,725	3,158	4,290	- 1,132	2,220	682	+ 1,538	160	564	- 404	- 14,723
2024	19,297	31,405	- 12,108	3,573	4,598	- 1,025	2,299	790	+ 1,509	190	805	- 615	- 12,239
Iceland													
2019	458	373	+ 85	103	399	- 295	11	2	+ 10	3	4	- 1	- 202
2020	439	314	+ 125	66	147	- 81	- 17	1	- 18	7	7	- 1	+ 26
2021	582	405	+ 177	91	172	- 81	1	2	- 1	4	5	- 1	+ 95
2022	709	664	+ 45	136	392	- 257	- 5	4	- 9	3	3	- 1	- 222
2023	804	567	+ 237	140	565	- 425	3	35	- 32	5	5	- 0	- 221
2024	628	468	+ 160	145	411	- 266	53	27	+ 26	5	4	+ 1	- 79
India													
2019	9,349	8,039	+ 1,310	3,461	4,737	- 1,276	1,445	- 61	+ 1,505	86	311	- 225	+ 1,314
2020	8,036	7,522	+ 515	2,840	4,708	- 1,868	1,481	- 124	+ 1,605	79	313	- 234	+ 17
2021	10,171	8,717	+ 1,453	4,135	5,217	- 1,082	1,802	- 44	+ 1,846	56	373	- 318	+ 1,900
2022	12,448	12,400	+ 48	5,627	7,069	- 1,442	2,519	- 17	+ 2,537	98	457	- 359	+ 783
2023	13,856	11,567	+ 2,289	4,942	8,342	- 3,401	2,712	63	+ 2,649	124	584	- 460	+ 1,078
2024	13,805	11,447	+ 2,358	6,039	9,287	- 3,248	3,093	55	+ 3,038	146	624	- 478	+ 1,669
Ireland													
2019	7,072	7,490	- 418	7,396	17,029	- 9,633	4,960	3,620	+ 1,340	4,970	4,381	+ 590	- 8,120
2020	6,637	6,764	- 127	7,417	16,989	- 9,572	3,753	3,933	- 180	6,087	5,334	+ 753	- 9,127
2021	6,700	7,591	- 891	9,522	20,292	- 10,771	5,441	5,561	- 120	7,786	6,896	+ 890	- 10,892
2022	7,987	8,373	- 385	12,185	24,501	- 12,316	7,510	6,564	+ 946	9,613	8,845	+ 767	- 10,988
2023	8,233	9,593	- 1,361	14,438	26,408	- 11,970	10,639	11,703	- 1,064	7,630	6,586	+ 1,044	- 13,351
2024	8,077	9,097	- 1,020	15,731	29,411	- 13,680	12,419	10,706	+ 1,713	8,475	7,335	+ 1,140	- 11,847
Italy													
2019	64,572	52,193	+ 12,379	9,080	14,681	- 5,601	7,127	4,665	+ 2,462	3,290	4,914	- 1,624	+ 7,615
2020	55,264	49,299	+ 5,964	7,546	9,510	- 1,964	5,563	2,539	+ 3,024	3,159	4,832	- 1,674	+ 5,351
2021	70,836	60,137	+ 10,699	8,786	13,337	- 4,551	6,531	2,435	+ 4,096	4,144	5,858	- 1,715	+ 8,529
2022	79,426	68,381	+ 11,045	11,956	18,875	- 6,919	7,604	6,160	+ 1,444	4,713	6,581	- 1,868	+ 3,702
2023	79,322	66,957	+ 12,365	12,441	20,950	- 8,509	10,199	7,424	+ 2,775	5,330	7,331	- 2,001	+ 4,631
2024	77,462	62,884	+ 14,578	13,379	22,175	- 8,796	9,846	7,516	+ 2,330	4,677	6,777	- 2,100	+ 6,013
Japan													
2019	17,738	22,078	- 4,340	6,394	4,955	+ 1,438	1,478	2,155	- 677	1,680	1,693	- 13	- 3,591
2020	15,586	19,006	- 3,420	5,456	4,019	+ 1,438	1,325	340	+ 985	1,407	1,487	- 80	- 1,078
2021	15,276	20,887	- 5,611	6,049	5,203	+ 847	1,758	370	+ 1,388	1,717	1,715	+ 2	- 3,375
2022	16,914	22,438	- 5,524	7,299	6,224	+ 1,075	1,586	660	+ 926	2,054	2,111	- 57	- 3,580
2023	17,527	22,129	- 4,602	7,334	5,788	+ 1,546	1,841	899	+ 943	2,662	2,670	- 8	- 2,122
2024	17,324	19,162	- 1,839	7,489	6,241	+ 1,248	1,843	1,706	+ 137	2,852	2,892	- 40	- 494
Korea (Republic of)													
2019	10,309	8,629	+ 1,680	3,192	2,623	+ 569	1,036	225	+ 812	92	179	- 87	+ 2,974
2020	12,427	8,812	+ 3,614	2,902	2,518	+ 384	966	183	+ 784	48	227	- 179	+ 4,603
2021	11,159	10,913	+ 246	3,578	3,374	+ 204	1,331	273	+ 1,058	31	148	- 118	+ 1,390
2022	15,446	11,563	+ 3,883	4,463	4,707	- 243	1,275	260	+ 1,015	26	325	- 299	+ 4,356
2023	18,261	10,666	+ 7,594	4,059	4,947	- 888	1,319	325	+ 994	15	182	- 167	+ 7,533
2024	12,106	10,281	+ 1,825	4,006	4,739	- 733	1,405	297	+ 1,108	16	159	- 143	+ 2,056

II. Current account

6. Regional breakdown

a) Current account, by country and group of countries *

€ million

Period	Goods			Services			Primary income			Secondary income			Balance of current account
	Receipts	Expend-iture	Balance	Receipts	Expend-iture	Balance	Receipts	Expend-iture	Balance	Receipts	Expend-iture	Balance	
	1	2	3	4	5	6	7	8	9	10	11	12	13
Latvia													
2019	1,667	840	+ 827	257	264	- 8	137	4	+ 132	4	28	- 24	+ 928
2020	1,472	865	+ 607	192	188	+ 4	72	2	+ 70	5	30	- 25	+ 656
2021	1,888	1,042	+ 846	217	318	- 102	56	1	+ 54	7	32	- 25	+ 774
2022	2,369	1,138	+ 1,231	264	400	- 136	58	2	+ 55	8	47	- 38	+ 1,112
2023	2,455	1,031	+ 1,425	288	497	- 209	73	11	+ 62	9	54	- 45	+ 1,234
2024	2,389	940	+ 1,449	333	588	- 255	117	4	+ 112	7	60	- 54	+ 1,253
Liechtenstein													
2019	445	256	+ 189	309	108	+ 201	50	393	- 343	68	71	- 4	+ 44
2020	411	220	+ 191	250	97	+ 153	- 99	291	- 390	59	17	+ 42	- 3
2021	526	794	- 267	260	149	+ 111	87	400	- 313	71	27	+ 44	- 426
2022	643	626	+ 18	306	129	+ 177	- 33	674	- 707	119	25	+ 94	- 419
2023	591	637	- 46	393	169	+ 224	- 3	823	- 825	100	22	+ 77	- 570
2024	593	626	- 33	634	233	+ 400	2	1,005	- 1,003	98	31	+ 66	- 569
Lithuania													
2019	3,401	1,934	+ 1,467	633	836	- 203	207	16	+ 191	7	45	- 39	+ 1,416
2020	3,303	2,038	+ 1,265	650	749	- 99	208	7	+ 202	9	52	- 43	+ 1,325
2021	4,297	2,515	+ 1,782	771	829	- 58	134	12	+ 123	14	59	- 45	+ 1,802
2022	5,364	3,011	+ 2,353	852	1,054	- 202	162	18	+ 145	18	96	- 78	+ 2,217
2023	5,404	2,649	+ 2,756	939	1,216	- 277	192	34	+ 158	20	86	- 66	+ 2,570
2024	4,860	2,651	+ 2,210	1,227	1,284	- 57	330	25	+ 305	37	178	- 141	+ 2,317
Luxembourg													
2019	4,364	5,999	- 1,635	13,031	7,951	+ 5,080	21,153	15,821	+ 5,332	1,810	1,143	+ 667	+ 9,445
2020	3,991	6,121	- 2,129	14,040	9,099	+ 4,941	17,376	10,029	+ 7,347	1,972	1,382	+ 590	+ 10,748
2021	4,658	6,779	- 2,121	16,930	14,137	+ 2,793	30,628	11,768	+ 18,860	2,811	1,705	+ 1,106	+ 20,638
2022	5,961	7,395	- 1,434	19,948	25,749	- 5,800	33,026	16,465	+ 16,562	3,126	1,956	+ 1,171	+ 10,498
2023	5,114	7,150	- 2,036	19,569	17,177	+ 2,392	40,437	23,444	+ 16,993	3,563	2,731	+ 832	+ 18,181
2024	4,768	7,838	- 3,070	19,198	17,908	+ 1,290	46,411	25,626	+ 20,785	3,773	3,049	+ 724	+ 19,729
Malaysia													
2019	3,330	7,203	- 3,874	752	1,279	- 527	482	35	+ 447	15	41	- 26	- 3,979
2020	2,886	6,654	- 3,768	670	1,208	- 538	382	55	+ 327	14	33	- 19	- 3,998
2021	3,446	8,227	- 4,782	834	1,501	- 667	416	72	+ 487	13	46	- 33	- 4,994
2022	4,349	9,838	- 5,489	1,099	2,000	- 901	520	31	+ 551	20	43	- 23	- 5,863
2023	4,449	8,770	- 4,321	953	2,025	- 1,072	566	23	+ 589	21	43	- 22	- 4,826
2024	3,737	7,892	- 4,155	986	2,165	- 1,179	539	22	+ 560	22	38	- 15	- 4,789
Malta													
2019	641	355	+ 286	441	1,187	- 746	779	201	+ 578	58	111	- 53	+ 65
2020	400	353	+ 47	332	988	- 656	407	273	+ 135	60	87	- 27	- 501
2021	524	348	+ 176	386	1,098	- 712	324	443	- 119	17	35	- 18	- 673
2022	1,359	468	+ 891	506	1,350	- 844	357	447	- 90	34	290	- 256	- 299
2023	948	492	+ 456	590	1,449	- 860	401	431	- 30	56	418	- 362	- 795
2024	704	534	+ 169	636	1,773	- 1,137	494	751	- 256	51	188	- 137	- 1,361
Mexico													
2019	9,643	8,106	+ 1,537	3,497	1,646	+ 1,852	1,970	- 155	+ 2,124	34	450	- 416	+ 5,098
2020	6,240	6,815	- 576	2,340	993	+ 1,347	1,018	55	+ 963	25	336	- 311	+ 1,424
2021	8,384	7,392	+ 992	2,734	1,217	+ 1,517	2,363	51	+ 2,312	20	243	- 223	+ 4,599
2022	9,612	8,813	+ 799	3,496	1,626	+ 1,870	2,908	23	+ 2,885	30	277	- 247	+ 5,307
2023	12,322	9,425	+ 2,897	3,474	2,088	+ 1,386	3,079	171	+ 2,908	32	238	- 207	+ 6,984
2024	11,295	8,550	+ 2,745	3,368	1,901	+ 1,467	3,491	126	+ 3,366	26	234	- 208	+ 7,370
Morocco													
2019	2,380	1,221	+ 1,159	221	718	- 497	137	45	+ 93	1	81	- 81	+ 673
2020	2,053	1,183	+ 871	218	253	- 35	61	44	+ 17	1	112	- 111	+ 742
2021	2,307	1,353	+ 954	233	187	+ 46	40	53	- 12	1	87	- 86	+ 901
2022	2,826	1,718	+ 1,108	268	314	- 46	94	69	+ 25	3	103	- 100	+ 987
2023	3,110	2,067	+ 1,044	281	723	- 442	120	60	+ 61	2	100	- 99	+ 563
2024	3,305	2,306	+ 999	305	639	- 334	220	57	+ 163	5	128	- 123	+ 706

II. Current account

6. Regional breakdown

a) Current account, by country and group of countries *

€ million

Period	Goods			Services			Primary income			Secondary income			Balance of current account
	Receipts	Expend- iture	Balance	Receipts	Expend- iture	Balance	Receipts	Expend- iture	Balance	Receipts	Expend- iture	Balance	
	1	2	3	4	5	6	7	8	9	10	11	12	
Netherlands													
2019	78,854	89,771	- 10,917	19,332	18,850	+ 482	47,878	12,734	+ 35,144	2,526	3,120	- 594	+ 24,115
2020	70,410	78,448	- 8,038	17,503	15,981	+ 1,522	20,404	10,785	+ 9,619	3,130	3,576	- 446	+ 2,657
2021	78,162	90,195	- 12,033	19,344	17,136	+ 2,208	20,128	18,690	+ 1,437	3,122	4,003	- 881	+ 9,269
2022	93,520	104,676	- 11,156	23,440	23,087	+ 353	39,543	22,699	+ 16,844	3,416	4,330	- 914	+ 5,127
2023	92,686	93,976	- 1,290	24,170	26,427	- 2,258	45,648	28,161	+ 17,486	3,580	4,622	- 1,042	+ 12,896
2024	95,767	87,718	+ 8,049	26,276	27,635	- 1,359	47,133	27,495	+ 19,639	4,140	5,072	- 932	+ 25,397
Norway													
2019	9,253	7,505	+ 1,748	1,760	2,583	- 824	1,442	222	+ 1,220	16	530	- 514	+ 1,631
2020	8,736	4,611	+ 4,125	1,330	1,663	- 333	1,493	423	+ 1,070	61	420	- 359	+ 4,504
2021	10,560	8,636	+ 1,924	1,580	2,420	- 839	1,760	286	+ 2,046	103	566	- 463	+ 2,668
2022	11,981	23,533	- 11,553	2,088	3,511	- 1,423	2,711	979	+ 1,732	150	557	- 407	- 11,651
2023	9,751	16,331	- 6,581	2,170	3,437	- 1,267	2,889	1,197	+ 1,692	124	310	- 186	- 6,342
2024	9,313	16,646	- 7,333	2,207	4,186	- 1,979	3,439	1,028	+ 2,411	112	492	- 380	- 7,282
Poland													
2019	57,076	51,626	+ 5,450	7,390	10,796	- 3,406	3,812	4,061	- 249	1,428	945	+ 483	+ 2,278
2020	54,232	52,067	+ 2,165	6,855	9,785	- 2,930	3,274	3,721	- 447	1,421	926	+ 495	- 717
2021	66,551	61,312	+ 5,239	7,617	10,705	- 3,087	3,608	4,245	- 637	1,442	1,065	+ 377	+ 1,893
2022	77,174	69,723	+ 7,451	9,279	13,695	- 4,417	4,516	5,289	- 773	1,655	1,186	+ 469	+ 2,731
2023	72,889	71,869	+ 1,020	10,184	15,752	- 5,569	5,060	5,719	- 660	1,897	1,264	+ 633	- 4,575
2024	75,626	69,009	+ 6,617	11,677	16,786	- 5,109	6,071	5,723	+ 348	1,931	1,325	+ 606	+ 2,462
Portugal													
2019	6,884	6,622	+ 262	1,363	2,439	- 1,076	989	34	+ 955	20	371	- 351	- 209
2020	5,175	5,749	- 574	1,137	1,392	- 254	770	9	+ 762	20	348	- 329	- 395
2021	6,026	6,182	- 155	1,332	1,760	- 428	895	13	+ 882	99	347	- 248	+ 50
2022	7,488	7,372	+ 116	1,673	3,286	- 1,613	877	84	+ 793	46	368	- 322	- 1,026
2023	7,421	7,125	+ 296	1,810	3,923	- 2,113	1,082	154	+ 928	49	409	- 360	- 1,249
2024	8,164	8,074	+ 90	1,817	4,452	- 2,635	1,105	112	+ 993	36	477	- 441	- 1,993
Romania													
2019	14,706	13,464	+ 1,242	2,066	2,788	- 722	1,231	1,093	+ 138	95	544	- 448	+ 210
2020	13,379	11,975	+ 1,403	1,862	2,691	- 830	863	914	- 50	162	596	- 434	+ 89
2021	13,445	13,036	+ 409	1,817	2,846	- 1,029	1,279	1,022	+ 257	163	634	- 471	- 834
2022	15,834	16,074	- 240	1,992	3,395	- 1,403	1,090	1,231	- 141	213	793	- 580	- 2,365
2023	15,611	17,396	- 1,785	2,248	4,044	- 1,796	1,189	1,415	- 226	223	778	- 556	- 4,363
2024	17,166	18,151	- 986	2,508	4,182	- 1,674	1,329	1,400	- 70	197	886	- 689	- 3,419
Russian Federation													
2019	26,069	28,196	- 2,127	2,908	2,365	+ 543	3,561	382	+ 3,179	61	231	- 170	+ 1,424
2020	23,900	19,108	+ 4,792	2,529	1,727	+ 802	3,194	448	+ 2,746	56	284	- 228	+ 8,112
2021	26,595	29,066	- 2,471	2,886	2,033	+ 854	3,977	46	+ 3,930	50	332	- 283	+ 2,030
2022	14,292	32,403	- 18,111	1,973	1,870	+ 103	3,910	118	+ 3,792	40	262	- 222	- 14,438
2023	8,476	3,492	+ 4,985	928	958	- 30	4,223	58	+ 4,165	12	178	- 166	+ 8,954
2024	7,456	1,844	+ 5,612	571	919	- 347	4,256	526	+ 3,729	6	218	- 212	+ 8,782
Singapore													
2019	7,553	4,866	+ 2,687	4,278	4,557	- 279	2,070	151	+ 1,918	29	82	- 53	+ 4,274
2020	6,804	4,977	+ 1,827	3,783	4,206	- 424	1,519	192	+ 1,711	16	73	- 89	+ 3,026
2021	9,084	6,254	+ 2,830	4,927	5,370	- 443	2,269	121	+ 2,148	31	137	- 107	+ 4,428
2022	9,522	7,656	+ 1,866	6,231	7,963	- 1,731	2,024	915	+ 1,110	61	51	+ 10	+ 1,254
2023	9,396	6,008	+ 3,388	5,846	7,267	- 1,421	3,042	1,510	+ 1,533	50	65	- 15	+ 3,485
2024	7,908	5,089	+ 2,819	6,338	7,824	- 1,487	2,067	1,337	+ 730	57	59	- 2	+ 2,060
Slovakia													
2019	8,576	15,789	- 7,214	1,358	1,806	- 449	727	217	+ 510	82	107	- 26	- 7,178
2020	7,397	13,625	- 6,228	1,210	1,781	- 570	580	200	+ 380	74	180	- 105	- 6,524
2021	11,147	15,173	- 4,026	1,318	1,852	- 535	577	193	+ 383	82	129	- 47	- 4,224
2022	14,300	17,718	- 3,417	1,427	2,255	- 828	622	237	+ 385	85	147	- 62	- 3,922
2023	14,268	18,631	- 4,362	1,792	2,744	- 952	769	319	+ 449	120	315	- 194	- 5,059
2024	13,924	18,726	- 4,803	1,731	2,831	- 1,099	795	250	+ 546	138	221	- 82	- 5,438

II. Current account

6. Regional breakdown

a) Current account, by country and group of countries *

€ million

Period	Goods			Services			Primary income			Secondary income			Balance of current account
	Receipts	Expend- iture	Balance	Receipts	Expend- iture	Balance	Receipts	Expend- iture	Balance	Receipts	Expend- iture	Balance	
	1	2	3	4	5	6	7	8	9	10	11	12	
Slovenia													
2019	5,339	5,699	- 360	598	882	- 284	287	54	+ 233	43	137	- 94	- 505
2020	4,650	5,191	- 540	542	658	- 116	219	66	+ 153	41	139	- 99	- 602
2021	5,722	6,132	- 410	600	701	- 101	264	77	+ 187	43	156	- 112	- 436
2022	6,743	7,258	- 515	678	965	- 286	218	86	+ 131	64	189	- 125	- 795
2023	6,256	6,422	- 166	701	1,171	- 470	277	118	+ 160	59	180	- 121	- 597
2024	6,704	6,738	- 33	816	1,211	- 396	265	58	+ 207	55	199	- 145	- 366
Spain													
2019	35,458	29,956	+ 5,502	8,499	13,515	- 5,016	5,419	561	+ 4,858	2,245	3,438	- 1,193	+ 4,152
2020	28,084	27,752	+ 332	7,095	7,257	- 162	6,342	1,030	+ 5,311	2,665	3,784	- 1,119	+ 4,363
2021	32,319	30,907	+ 1,412	7,793	11,186	- 3,393	5,406	1,041	+ 4,365	2,321	3,305	- 983	+ 1,401
2022	36,139	34,514	+ 1,625	10,915	17,223	- 6,307	6,908	2,215	+ 4,693	2,017	3,317	- 1,300	+ 1,289
2023	37,396	33,634	+ 3,763	11,275	20,048	- 8,773	9,886	3,887	+ 6,000	2,235	3,577	- 1,342	- 352
2024	39,578	34,131	+ 5,447	12,664	20,710	- 8,046	9,073	4,722	+ 4,351	3,655	5,266	- 1,611	+ 141
Sweden													
2019	22,800	11,538	+ 11,262	5,601	3,948	+ 1,653	2,957	1,428	+ 1,529	135	364	- 229	+ 14,215
2020	21,005	10,712	+ 10,293	5,002	3,541	+ 1,461	1,589	526	+ 1,063	183	364	- 181	+ 12,636
2021	24,231	12,456	+ 11,775	5,760	4,356	+ 1,405	5,215	3,144	+ 2,071	190	348	- 159	+ 15,092
2022	25,759	14,275	+ 11,484	6,375	5,123	+ 1,252	3,075	433	+ 2,642	258	359	- 101	+ 15,277
2023	25,585	14,438	+ 11,147	6,308	5,558	+ 750	3,705	837	+ 2,869	271	384	- 112	+ 14,653
2024	24,306	14,231	+ 10,075	6,918	5,878	+ 1,041	4,255	680	+ 3,574	368	466	- 98	+ 14,592
Switzerland													
2019	49,282	48,986	+ 296	27,451	15,035	+ 12,416	15,074	10,314	+ 4,760	7,065	8,270	- 1,204	+ 16,268
2020	51,556	51,218	+ 338	25,702	14,405	+ 11,297	12,066	9,103	+ 2,963	6,255	7,976	- 1,721	+ 12,878
2021	58,255	58,068	+ 187	27,812	16,079	+ 11,733	14,422	8,730	+ 5,693	5,752	7,429	- 1,677	+ 15,936
2022	65,742	70,534	- 4,792	34,668	18,953	+ 15,715	15,878	13,602	+ 2,275	6,299	7,760	- 1,461	+ 11,738
2023	62,207	62,431	- 224	35,452	20,879	+ 14,572	18,007	17,468	+ 540	8,093	9,511	- 1,418	+ 13,470
2024	58,822	60,102	- 1,281	37,272	22,726	+ 14,546	18,743	15,707	+ 3,036	10,568	12,307	- 1,739	+ 14,562
Taiwan													
2019	8,136	9,217	- 1,081	1,048	1,572	- 524	359	82	+ 277	16	76	- 60	- 1,389
2020	8,558	8,744	- 186	1,005	1,893	- 888	374	31	+ 343	14	73	- 59	- 790
2021	9,570	10,948	- 1,378	1,250	2,753	- 1,503	375	19	+ 394	32	231	- 199	- 2,687
2022	10,872	14,806	- 3,934	1,437	3,780	- 2,343	431	64	+ 368	32	474	- 442	- 6,350
2023	10,925	12,987	- 2,062	1,306	3,629	- 2,324	443	91	+ 352	19	491	- 472	- 4,506
2024	10,040	10,836	- 796	1,302	3,706	- 2,404	438	189	+ 249	27	730	- 704	- 3,654
Turkey													
2019	16,404	14,422	+ 1,983	2,485	4,624	- 2,139	2,839	145	+ 2,694	29	1,594	- 1,565	+ 972
2020	19,246	13,669	+ 5,577	2,111	2,131	- 21	1,932	181	+ 1,751	32	1,643	- 1,611	+ 5,696
2021	20,181	16,448	+ 3,733	2,586	3,925	- 1,339	2,736	218	+ 2,518	37	1,695	- 1,658	+ 3,255
2022	24,213	22,468	+ 1,745	3,480	6,284	- 2,804	4,089	198	+ 3,891	59	1,728	- 1,669	+ 1,164
2023	28,448	21,789	+ 6,659	3,426	6,910	- 3,484	5,681	714	+ 4,967	53	1,745	- 1,692	+ 6,451
2024	27,402	20,843	+ 6,559	3,832	7,801	- 3,969	3,980	1,078	+ 2,902	52	1,777	- 1,726	+ 3,767
United Kingdom													
2019	77,342	35,593	+ 41,749	27,728	26,832	+ 896	14,271	10,451	+ 3,820	9,597	8,613	+ 984	+ 47,449
2020	62,846	28,917	+ 33,928	27,511	25,918	+ 1,592	6,433	13,731	- 7,297	11,559	10,809	+ 750	+ 28,974
2021	69,995	29,286	+ 40,709	29,775	30,610	- 835	18,630	13,298	+ 5,332	13,409	12,880	+ 529	+ 45,735
2022	81,572	35,752	+ 45,819	34,649	37,011	- 2,362	23,748	30,155	- 6,407	16,423	16,313	+ 110	+ 37,160
2023	87,740	35,723	+ 52,016	35,017	40,209	- 5,192	34,239	44,937	- 10,698	17,191	16,495	+ 696	+ 36,822
2024	91,593	33,359	+ 58,234	35,434	42,168	- 6,734	26,617	45,881	- 19,264	17,048	16,185	+ 864	+ 33,100
United States													
2019	102,960	55,543	+ 47,416	48,221	45,085	+ 3,135	26,823	9,529	+ 17,293	17,353	19,993	- 2,640	+ 65,205
2020	87,210	49,058	+ 38,152	40,762	36,894	+ 3,868	25,622	8,766	+ 16,856	17,834	18,718	- 884	+ 57,992
2021	102,960	52,487	+ 50,473	62,526	43,567	+ 18,959	28,860	9,029	+ 19,830	22,420	24,015	- 1,595	+ 87,667
2022	136,023	70,331	+ 65,692	73,754	54,856	+ 18,898	31,195	14,341	+ 16,854	26,017	26,845	- 828	+ 100,616
2023	136,864	62,800	+ 74,064	68,956	60,477	+ 8,480	36,410	19,330	+ 17,080	28,860	29,890	- 1,030	+ 98,593
2024	138,298	61,905	+ 76,393	68,316	65,044	+ 3,272	48,142	23,584	+ 24,557	33,573	35,220	- 1,647	+ 102,575

II. Current account

6. Regional breakdown

b) Special trade, by country and group of countries *

€ million

Group of countries/country		2022	2023	2024	2024			2025		
					Oct.	Nov.	Dec.	Jan.	Feb.	Mar.
All countries ¹	Exports	1,594,342	1,575,209	1,548,298	132,912	132,595	111,828	125,190	129,997	140,261
	Imports	1,506,254	1,357,465	1,307,843	118,554	112,194	96,967	112,349	111,367	116,838
	Balance	+ 88,088	+ 217,744	+ 240,456	+ 14,358	+ 20,401	+ 14,861	+ 12,841	+ 18,630	+ 23,423
I. European countries	Exports	1,091,862	1,072,633	1,052,886	91,808	90,505	74,635	88,022	89,097	96,265
	Imports	973,845	874,238	836,085	75,404	71,621	60,276	70,396	73,438	74,034
	Balance	+ 118,016	+ 198,396	+ 216,801	+ 16,404	+ 18,884	+ 14,358	+ 17,626	+ 15,660	+ 22,231
1. EU Member States (27)	Exports	878,946	859,537	838,318	73,291	70,930	59,457	70,037	70,171	76,941
	Imports	738,272	712,019	679,628	61,194	57,719	48,137	54,999	58,488	60,535
	Balance	+ 140,674	+ 147,518	+ 158,690	+ 12,097	+ 13,211	+ 11,319	+ 15,038	+ 11,684	+ 16,405
Euro area (20) countries	Exports	617,386	603,547	583,537	50,600	49,076	41,874	48,843	48,739	53,632
	Imports	507,264	474,607	449,413	40,177	37,299	32,048	36,224	38,792	39,717
	Balance	+ 110,121	+ 128,940	+ 134,124	+ 10,423	+ 11,777	+ 9,825	+ 12,619	+ 9,948	+ 13,915
of which:										
Austria	Exports	90,280	80,355	76,193	6,693	6,593	5,358	6,309	6,327	6,904
	Imports	58,161	53,744	50,955	4,610	4,304	3,589	4,086	4,237	4,553
	Balance	+ 32,119	+ 26,610	+ 25,239	+ 2,083	+ 2,288	+ 1,769	+ 2,223	+ 2,090	+ 2,352
Belgium and Luxembourg	Exports	70,927	67,497	64,831	5,499	5,371	4,765	5,614	5,234	5,963
	Imports	67,200	56,141	51,174	4,944	4,136	3,565	4,040	4,069	4,416
	Balance	+ 3,726	+ 11,356	+ 13,657	+ 555	+ 1,234	+ 1,200	+ 1,574	+ 1,164	+ 1,547
Finland	Exports	12,712	11,753	10,917	941	892	708	901	903	1,020
	Imports	9,979	9,200	9,118	844	692	595	596	676	714
	Balance	+ 2,733	+ 2,553	+ 1,799	+ 97	+ 200	+ 112	+ 305	+ 227	+ 306
France	Exports	118,225	119,825	115,355	9,934	9,499	7,966	9,299	9,639	10,190
	Imports	69,980	69,872	66,988	6,131	5,771	4,862	5,063	5,356	5,902
	Balance	+ 48,244	+ 49,953	+ 48,367	+ 3,803	+ 3,728	+ 3,104	+ 4,236	+ 4,283	+ 4,288
Ireland	Exports	10,916	9,695	9,913	830	808	927	822	759	924
	Imports	28,616	25,615	24,310	2,339	1,802	1,345	1,993	2,077	1,669
	Balance	- 17,700	- 15,921	- 14,398	- 1,509	- 993	- 417	- 1,171	- 1,319	- 746
Italy	Exports	89,149	85,403	80,166	7,084	6,761	5,497	6,716	6,880	7,592
	Imports	73,271	71,323	67,290	6,013	5,597	5,018	5,237	6,807	6,092
	Balance	+ 15,878	+ 14,080	+ 12,877	+ 1,071	+ 1,164	+ 479	+ 1,479	+ 73	+ 1,499
Netherlands	Exports	112,496	111,835	109,377	9,219	9,134	8,483	9,191	9,038	9,875
	Imports	115,117	102,911	93,723	7,659	7,573	6,930	8,100	8,123	8,424
	Balance	- 2,621	+ 8,924	+ 15,653	+ 1,560	+ 1,561	+ 1,553	+ 1,091	+ 914	+ 1,451
Portugal	Exports	11,583	12,089	12,054	1,060	1,002	843	1,064	1,078	1,149
	Imports	8,402	7,984	8,958	819	849	623	976	794	767
	Balance	+ 3,181	+ 4,105	+ 3,096	+ 241	+ 154	+ 220	+ 87	+ 283	+ 382
Slovakia	Exports	17,384	17,820	17,751	1,692	1,518	1,116	1,453	1,494	1,643
	Imports	19,504	20,553	20,266	1,913	1,769	1,328	1,528	1,768	1,841
	Balance	- 2,120	- 2,733	- 2,515	- 221	- 250	- 212	- 75	- 274	- 199
Spain ²	Exports	49,973	54,037	53,596	4,742	4,548	3,772	4,630	4,609	5,249
	Imports	37,636	38,636	38,001	3,231	3,306	2,842	3,109	3,321	3,661
	Balance	+ 12,337	+ 15,401	+ 15,595	+ 1,511	+ 1,243	+ 930	+ 1,521	+ 1,288	+ 1,588
Other EU Member States	Exports	261,561	255,990	254,781	22,691	21,854	17,583	21,195	21,432	23,308
	Imports	231,008	237,412	230,215	21,018	20,420	16,089	18,775	19,696	20,818
	Balance	+ 30,553	+ 18,578	+ 24,566	+ 1,674	+ 1,434	+ 1,494	+ 2,419	+ 1,736	+ 2,490
of which:										
Czech Republic	Exports	55,844	52,865	51,128	4,462	4,410	3,509	4,373	4,276	4,617
	Imports	59,317	60,898	59,329	5,489	5,726	4,048	4,884	5,018	5,375
	Balance	- 3,473	- 8,033	- 8,201	- 1,028	- 1,316	- 539	- 511	- 741	- 758
Denmark	Exports	23,983	22,273	22,251	1,980	1,915	1,605	1,995	1,957	2,107
	Imports	15,978	14,874	14,643	1,242	1,278	1,168	1,212	1,265	1,401
	Balance	+ 8,005	+ 7,399	+ 7,609	+ 737	+ 637	+ 437	+ 783	+ 692	+ 705
Hungary	Exports	33,014	32,523	32,242	2,817	2,585	2,075	2,497	2,455	2,790
	Imports	34,176	36,991	34,741	3,031	2,941	2,360	2,743	2,944	3,118
	Balance	- 1,162	- 4,468	- 2,499	- 214	- 357	- 285	- 246	- 489	- 328
Poland	Exports	92,628	90,645	93,147	8,471	8,115	6,670	7,819	8,011	8,706
	Imports	78,385	80,835	77,311	7,190	6,773	5,507	6,554	6,886	7,109
	Balance	+ 14,243	+ 9,810	+ 15,836	+ 1,281	+ 1,342	+ 1,164	+ 1,265	+ 1,125	+ 1,598
Sweden	Exports	29,701	29,684	27,922	2,484	2,424	1,884	2,290	2,332	2,521
	Imports	18,713	18,554	18,070	1,718	1,533	1,379	1,476	1,504	1,611
	Balance	+ 10,988	+ 11,129	+ 9,851	+ 765	+ 891	+ 505	+ 814	+ 828	+ 910

* Source: Federal Statistical Office. Exports (fob) by country of destination, Imports (cif) by country of origin. Data on countries and groups of countries on the basis of the latest

position. Euro area including Croatia. ¹ Including fuel and other supplies for ships on aircraft as well as other data not classifiable by region. ² Excluding Ceuta and Melilla.

II. Current account

6. Regional breakdown

b) Special trade, by country and group of countries *

€ million

Group of countries/country		2022	2023	2024	2024			2025		
					Oct.	Nov.	Dec.	Jan.	Feb.	Mar.
2. Other European countries	Exports	212,915	213,096	214,568	18,516	19,575	15,178	17,985	18,926	19,325
	Imports	235,573	162,219	156,457	14,210	13,902	12,139	15,398	14,950	13,499
	Balance	- 22,658	+ 50,878	+ 58,111	+ 4,307	+ 5,673	+ 3,039	+ 2,587	+ 3,976	+ 5,826
of which:										
Norway	Exports	11,192	9,114	9,819	937	917	693	785	865	961
	Imports	63,087	30,640	27,280	2,597	2,625	2,600	3,163	2,945	1,690
	Balance	- 51,895	- 21,527	- 17,461	- 1,660	- 1,708	- 1,907	- 2,378	- 2,080	- 729
Russian Federation	Exports	14,545	8,897	7,568	627	780	426	560	572	698
	Imports	36,363	3,598	1,785	131	104	124	106	101	112
	Balance	- 21,818	+ 5,300	+ 5,783	+ 497	+ 676	+ 302	+ 455	+ 471	+ 585
Switzerland	Exports	70,611	66,780	68,015	5,658	6,043	5,016	6,048	6,480	6,457
	Imports	55,734	51,757	52,575	4,778	4,787	3,950	4,806	5,094	4,731
	Balance	+ 14,877	+ 15,022	+ 15,440	+ 879	+ 1,256	+ 1,066	+ 1,242	+ 1,385	+ 1,725
Turkey	Exports	26,973	30,712	28,295	2,562	2,560	2,069	2,409	2,582	2,565
	Imports	24,728	24,321	23,452	2,110	1,938	1,790	2,353	2,031	2,188
	Balance	+ 2,245	+ 6,390	+ 4,844	+ 452	+ 622	+ 279	+ 57	+ 550	+ 376
United Kingdom	Exports	73,767	78,427	80,299	7,064	7,514	5,260	6,630	6,618	6,855
	Imports	40,452	36,770	36,143	3,138	3,196	2,634	3,640	3,504	3,427
	Balance	+ 33,315	+ 41,657	+ 44,156	+ 3,925	+ 4,318	+ 2,625	+ 2,990	+ 3,114	+ 3,428
II. Outside Europe	Exports	497,428	497,748	490,548	40,657	41,698	36,839	36,822	40,519	43,613
	Imports	531,456	482,269	470,529	43,061	40,483	36,573	41,805	37,740	42,576
	Balance	- 34,028	+ 15,480	+ 20,019	- 2,404	+ 1,215	+ 266	- 4,983	+ 2,779	+ 1,036
1. Africa	Exports	26,462	28,742	26,317	2,199	2,232	2,112	2,343	2,291	2,428
	Imports	34,242	32,477	32,121	2,308	2,669	2,790	2,946	2,424	2,902
	Balance	- 7,781	- 3,735	- 5,804	- 109	- 436	- 678	- 603	- 133	- 474
2. America	Exports	210,652	216,538	219,071	18,165	18,568	15,807	16,331	18,395	20,088
	Imports	132,019	130,487	129,179	11,195	10,606	10,065	11,529	10,341	11,562
	Balance	+ 78,632	+ 86,051	+ 89,892	+ 6,970	+ 7,962	+ 5,742	+ 4,802	+ 8,054	+ 8,526
of which:										
Brazil	Exports	12,904	12,800	13,185	1,108	962	934	1,076	1,059	1,133
	Imports	9,514	8,239	9,056	855	1,010	769	726	567	643
	Balance	+ 3,390	+ 4,561	+ 4,130	+ 254	- 48	+ 165	+ 350	+ 492	+ 490
United States	Exports	156,208	157,930	161,386	13,368	14,345	11,479	11,978	13,979	15,262
	Imports	93,346	94,634	91,570	7,823	7,363	6,773	7,991	7,072	8,444
	Balance	+ 62,863	+ 63,296	+ 69,816	+ 5,545	+ 6,981	+ 4,705	+ 3,987	+ 6,906	+ 6,819
3. Asia	Exports	246,289	238,709	232,127	19,279	19,817	17,977	17,274	18,865	20,115
	Imports	357,680	313,055	303,459	29,044	26,768	23,259	26,775	24,493	27,548
	Balance	- 111,390	- 74,346	- 71,333	- 9,765	- 6,951	- 5,282	- 9,501	- 5,627	- 7,433
Countries in the Middle East	Exports	29,648	32,039	33,888	3,031	3,142	3,019	2,775	2,901	3,001
	Imports	13,308	16,057	11,459	903	1,026	858	732	769	949
	Balance	+ 16,341	+ 15,983	+ 22,429	+ 2,128	+ 2,116	+ 2,161	+ 2,043	+ 2,132	+ 2,053
Other Asian countries	Exports	216,641	206,670	198,239	16,249	16,676	14,958	14,499	15,964	17,113
	Imports	344,372	296,999	292,001	28,141	25,742	22,401	26,043	23,724	26,599
	Balance	- 127,731	- 90,328	- 93,762	- 11,892	- 9,067	- 7,443	- 11,544	- 7,759	- 9,486
of which:										
China, People's Republic of 3	Exports	106,762	97,346	89,935	7,141	6,672	6,048	6,221	6,495	7,822
	Imports	192,855	156,831	156,184	15,241	14,223	12,110	14,057	12,700	13,915
	Balance	- 86,093	- 59,484	- 66,250	- 8,100	- 7,551	- 6,062	- 7,837	- 6,205	- 6,092
Japan	Exports	20,511	20,238	21,556	1,864	2,525	1,445	1,781	2,482	1,760
	Imports	25,420	25,568	22,617	1,971	1,920	1,736	1,789	1,829	1,923
	Balance	- 4,909	- 5,330	- 1,062	- 106	+ 605	- 291	- 8	+ 653	- 163
Korea, Republic of	Exports	21,527	20,423	19,587	1,638	1,561	1,448	1,409	1,583	1,503
	Imports	13,358	13,862	13,332	896	1,060	777	905	993	1,277
	Balance	+ 8,169	+ 6,561	+ 6,255	+ 742	+ 501	+ 672	+ 505	+ 591	+ 225
4. Oceania and polar regions	Exports	14,024	13,759	13,033	1,015	1,080	943	874	968	982
	Imports	7,514	6,249	5,770	515	440	459	554	483	565
	Balance	+ 6,510	+ 7,510	+ 7,263	+ 500	+ 640	+ 484	+ 320	+ 485	+ 417
Memo item: OECD countries	Exports	1,280,315	1,264,635	1,246,341	107,784	107,524	88,305	102,325	105,940	113,515
	Imports	1,059,667	991,379	946,403	84,599	80,481	68,856	80,469	82,230	84,370
	Balance	+ 220,648	+ 273,256	+ 299,938	+ 23,185	+ 27,042	+ 19,449	+ 21,856	+ 23,710	+ 29,146

3 Excluding Hongkong.

II. Current account

6. Regional breakdown c) Travel - annual figures *

€ million

Group of countries/country	Receipts				Expenditure			
	2021	2022	2023	2024	2021	2022	2023	2024
Rest of the world of which:	18,827	30,258	34,993	37,055	43,150	85,204	106,767	111,115
Europe	16,385	25,278	28,678	30,610	39,452	71,782	87,438	92,679
EU Member States (27 excl. GB) of which:	13,317	20,539	23,223	24,860	34,061	60,740	73,692	77,166
Austria	1,335	2,095	2,370	2,487	4,733	9,125	10,762	12,058
Belgium	775	1,021	1,114	1,152	471	983	1,272	1,527
Croatia	105	146	174	190	1,916	2,525	3,212	2,869
Czechia	576	962	1,118	1,159	1,085	2,190	2,785	2,413
Denmark	756	1,474	1,571	1,576	1,295	1,787	2,784	2,776
France	1,862	2,758	3,278	3,426	2,996	6,285	7,554	8,175
Greece	146	210	259	267	2,678	3,534	3,509	4,062
Hungary	157	220	259	280	256	510	642	691
Italy	660	1,129	1,245	1,271	6,281	10,085	11,177	11,867
Luxemburg	402	535	587	625	602	1,029	1,238	1,037
Netherlands	1,939	3,225	3,498	4,076	2,729	5,515	7,208	7,666
Poland	2,327	3,024	3,520	3,837	1,632	3,390	4,061	3,806
Portugal	143	230	270	295	745	1,934	2,153	2,302
Spain	576	1,016	1,250	1,348	4,876	8,116	10,862	11,141
United Kingdom	492	831	1,094	1,178	371	2,080	2,539	2,596
<i>Memo item:</i> <i>Euro area (20)</i>	8,727	13,719	15,519	16,665	28,809	51,030	61,397	65,607
European Free Trade Association (EFTA) of which:	1,969	3,264	3,615	3,744	2,205	4,104	5,465	6,391
Switzerland	1,838	2,986	3,334	3,477	1,636	2,384	3,311	3,726
Other European countries (excl. EFTA) of which:	1,099	1,474	1,840	2,006	3,186	6,937	8,281	9,122
Turkey	114	196	296	347	2,206	3,878	4,392	5,097
Africa of which:	126	177	159	139	947	3,027	4,440	3,985
North Africa	56	70	54	46	472	1,575	2,358	2,296
America of which:	1,163	2,704	3,590	3,763	1,381	6,139	7,003	7,665
United States	963	2,275	3,092	3,265	345	3,767	3,484	4,130
Asia	1,115	1,965	2,390	2,375	1,201	3,693	6,900	6,021

* For more detailed information on travel data, see "Explanatory notes and lists".
Regional figures are subject to considerable uncertainty. Countries classified into

respective groups of countries, see "Explanatory notes and lists".

II. Current account

6. Regional breakdown

d) Travel - quarterly figures *

€ million

Group of countries/country	2023			2024				2025
	Q2	Q3	Q4	Q1	Q2	Q3	Q4	Q1
Receipts								
Rest of the world	9,226	10,518	8,448	7,115	9,820	11,248	8,872	7,127
of which:								
Europe	7,457	8,636	6,904	5,968	8,022	9,259	7,361	6,027
EU Member States (27 excl. GB)	6,002	7,143	5,532	4,755	6,441	7,683	5,982	4,949
of which:								
Austria	617	732	569	482	675	711	619	481
Czechia	281	340	270	235	286	335	303	238
France	844	1,011	796	645	905	1,064	811	636
Italy	323	390	274	242	325	419	285	239
Netherlands	863	1,174	812	749	987	1,350	990	885
Poland	893	976	830	876	1,026	1,029	906	930
Spain	325	428	275	234	335	484	294	237
<i>Memo item:</i> <i>Euro area (20)</i>	4,036	4,872	3,667	3,060	4,281	5,316	4,007	3,215
European Free Trade Association (EFTA)	976	985	908	808	1,030	1,002	903	695
of which:								
Switzerland	893	893	853	755	953	917	852	653
Other European countries (excl. EFTA)	479	508	465	405	551	574	476	383
of which:								
Turkey	77	68	74	80	82	90	95	101
America	1,017	1,084	855	659	1,079	1,203	822	625
Expenditure								
Rest of the world	27,341	35,821	25,469	18,155	29,230	37,202	26,528	18,940
of which:								
Europe	22,888	31,471	19,744	13,695	25,112	33,103	20,769	14,725
EU Member States (27 excl. GB)	19,619	26,295	16,300	11,127	21,085	27,940	17,014	12,129
of which:								
Austria	2,221	3,294	1,861	3,764	3,115	3,276	1,904	3,887
Czechia	710	715	797	262	589	746	815	447
France	1,978	3,174	1,615	929	2,238	3,379	1,629	989
Italy	3,430	4,542	2,025	1,403	3,516	4,806	2,142	1,436
Netherlands	2,135	1,972	2,068	924	1,934	2,535	2,274	919
Poland	915	1,232	1,168	499	778	1,372	1,158	669
Spain	2,958	2,901	3,061	1,852	3,083	3,035	3,172	1,954
<i>Memo item:</i> <i>Euro area (20)</i>	16,425	22,219	13,259	9,841	18,211	23,626	13,929	10,388
European Free Trade Association (EFTA)	1,354	1,894	1,146	1,524	1,802	1,854	1,212	1,439
of which:								
Switzerland	778	925	761	693	1,177	943	912	810
Other European countries (excl. EFTA)	1,915	3,282	2,297	1,044	2,225	3,310	2,543	1,157
of which:								
Turkey	725	1,843	1,454	568	1,050	1,823	1,656	594
America	1,399	2,025	2,246	1,732	1,837	1,980	2,117	1,229

* For more detailed information on travel data, see "Explanatory notes and lists". respective groups of countries, see "Explanatory notes and lists".
Regional figures are subject to considerable uncertainty. Countries classified into

II. Current account

7. Memo item: Transfers in connection with the EU budget *

€ million

Period	Transfers from the European Union budget							Transfers to the European Union budget						
	Net German contribution to the EU budget ¹	Total	of which:					Total	Own resources of the European Union					
			Under the common agricultural policy ¹	Refund of collection costs ²	EAGF ³	Social fund	Regional fund		Trans-European networks	Customs duties and levies under the common agricultural policy	EU share in value added tax revenue	GNI-related financing ⁴	Plastics own resource	Other transfers
1	2	3	4	5	6	7	8	9	10	11	12	13	14	
2010	- 20,214	4,686	-	1,020	1,343	553	1,673	97	24,900	4,234	1,587	19,064	-	15
2011	- 19,040	5,470	-	1,156	1,282	622	2,338	72	24,509	4,609	1,659	18,234	-	8
2012	- 20,639	5,714	-	1,134	1,452	533	2,521	74	26,353	4,482	1,786	20,068	-	17
2013	- 25,787	5,520	-	1,086	1,407	854	2,010	163	31,307	4,409	1,798	25,072	-	28
2014	- 25,364	5,593	1	1,111	1,128	1,106	2,184	59	30,957	4,518	3,658	22,776	-	4
2015	- 25,521	5,680	0	1,285	1,124	927	2,299	40	31,201	5,218	3,731	21,944	-	308
2016	- 22,606	3,963	0	1,030	881	731	1,044	275	26,569	5,168	3,912	17,350	-	137
2017	- 20,839	3,976	0	1,025	941	1,093	628	286	24,815	5,032	1,997	17,585	-	200
2018	- 25,595	4,748	0	1,001	1,124	1,139	1,063	413	30,343	5,026	2,036	23,182	-	100
2019	- 26,157	4,827	0	1,021	1,344	992	1,124	337	30,984	5,075	2,198	23,639	-	72
2020	- 27,947	4,961	-	963	1,288	1,209	1,340	152	32,908	4,734	2,093	25,996	-	85
2021	- 28,133	11,788	-	1,137	1,421	1,264	1,511	61	39,921	5,301	4,416	28,683	1,357	164
2022	- 28,989	10,123	-	1,630	1,534	1,061	1,749	269	39,112	6,706	4,838	26,088	1,377	104
2023	- 24,103	9,908	-	1,499	1,594	1,176	2,583	183	34,011	5,669	5,306	21,563	1,423	49
2024	- 22,657	9,393	-	1,357	1,961	163	3,371	332	32,050	5,483	5,440	19,722	1,378	27
2022 Q2	- 8,271	1,941	-	386	282	286	381	9	10,213	1,634	1,185	7,046	348	0
Q3	- 8,318	1,720	-	404	163	207	344	-	10,037	1,631	1,185	6,848	348	26
Q4	- 3,943	4,620	-	484	756	283	792	259	8,563	1,771	1,284	5,098	333	77
2023 Q1	- 6,433	1,904	-	435	383	427	359	105	8,337	1,503	1,317	5,160	357	-
Q2	- 6,975	1,938	-	360	312	253	520	67	8,913	1,440	1,232	5,906	334	-
Q3	- 6,791	1,909	-	367	182	201	567	0	8,700	1,358	1,275	5,693	345	29
Q4	- 3,904	4,158	-	337	718	295	1,137	12	8,062	1,368	1,481	4,804	388	20
2024 Q1	- 4,613	2,699	-	318	839	63	1,043	243	7,313	1,191	1,494	4,241	379	8
Q2	- 4,722	2,792	-	313	422	47	1,549	1	7,513	1,331	1,307	4,543	331	1
Q3	- 6,045	1,940	-	342	505	-	473	1	7,986	1,436	1,400	4,794	355	0
Q4	- 7,277	1,962	-	384	194	53	306	87	9,239	1,525	1,239	6,145	312	18
2025 Q1	- 7,470	1,286	-	350	372	76	228	33	8,755	1,399	1,405	5,608	343	0
2022 Oct.	- 1,141	1,536	-	158	252	94	264	86	2,677	553	395	1,594	116	19
Nov.	- 1,828	1,545	-	167	252	94	264	86	3,373	655	395	2,207	116	0
Dec.	- 974	1,539	-	160	252	94	264	86	2,513	562	494	1,297	101	58
2023 Jan.	- 1,592	649	-	159	128	142	120	35	2,240	540	425	1,160	115	-
Feb.	- 2,522	630	-	141	128	142	120	35	3,153	505	510	2,000	138	-
Mar.	- 2,319	625	-	135	128	142	120	35	2,944	458	382	2,000	104	-
Apr.	- 2,219	652	-	126	104	84	173	22	2,871	479	382	1,906	104	-
May	- 2,348	640	-	115	104	84	173	22	2,989	449	425	2,000	115	-
June	- 2,408	645	-	120	104	84	173	22	3,053	513	425	2,000	115	-
July	- 2,401	633	-	119	61	67	189	0	3,034	479	425	2,000	115	15
Aug.	- 2,106	642	-	128	61	67	189	0	2,749	516	425	1,693	115	-
Sep.	- 2,284	634	-	120	61	67	189	0	2,917	363	425	2,000	115	15
Oct.	- 1,663	1,403	-	129	239	98	379	4	3,066	492	425	2,034	115	-
Nov.	- 1,702	1,364	-	91	239	98	379	4	3,066	461	425	2,065	115	-
Dec.	- 539	1,391	-	117	239	98	379	4	1,929	415	632	705	158	20
2024 Jan.	- 435	1,259	-	115	32	63	959	25	1,694	397	467	704	118	8
Feb.	- 1,870	891	-	104	492	-	17	213	2,761	465	513	1,653	130	0
Mar.	- 2,308	549	-	99	315	-	67	4	2,857	329	513	1,884	130	0
Apr.	- 948	1,400	-	116	263	11	864	-	2,347	460	420	1,361	107	0
May	- 1,632	705	-	82	30	36	386	1	2,337	449	420	1,361	107	1
June	- 2,142	687	-	115	129	-	299	-	2,829	423	467	1,821	118	0
July	- 2,125	504	-	112	-	-	186	-	2,629	446	467	1,598	118	0
Aug.	- 2,079	597	-	106	240	-	44	1	2,676	493	467	1,598	118	-
Sep.	- 1,842	839	-	124	265	-	243	1	2,681	498	467	1,598	118	-
Oct.	- 2,068	659	-	123	0	-	136	87	2,727	544	467	1,598	118	0
Nov.	- 2,097	577	-	124	8	53	79	1	2,674	490	467	1,598	118	0
Dec.	- 3,112	726	-	136	186	-	91	-	3,838	490	305	2,949	75	18
2025 Jan.	- 2,624	347	-	123	-	76	121	28	2,970	490	468	1,897	114	0
Feb.	- 2,605	278	-	112	-	-	47	5	2,883	447	468	1,853	114	-
Mar.	- 2,241	661	-	115	372	-	60	-	2,902	462	468	1,858	114	-

* Transfers in connection with the EU budget, which are summarised here, comprise mainly secondary income. The refunds of collection costs constitute receipts from services in the balance of payments; payments from the Regional Fund and the European Agricultural Guarantee Fund (EAGF) (up until 2006 European Agricultural Guidance and Guarantee Fund (EAGGF)) are recorded in the capital account under capital transfers. ¹ Excl. special monetary compensation for exports to the United Kingdom and Italy. The monetary compensatory amounts for these countries' imports from other EU Member States are paid out via the exporting country and not, as is normally the case, by the importing country. ² Refund of collection costs at 10%

between 1988 and 2000; 25% from 2001 onwards for custom duties and levies under the common agricultural policy; back payments are included in the 2002 figure. Since 1988, the Member States have retained this sum when transferring own resources to the EU. ³ Until the end of 2006, includes payments by the guidance section of EAGFL. Incl. the European Fisheries Fund and direct payments from the EU to final beneficiaries. ⁴ Additional EU receipts for financing the remainder of the EU budget; they are calculated on the basis of the German share in the total gross national income (GNI) of the EU.